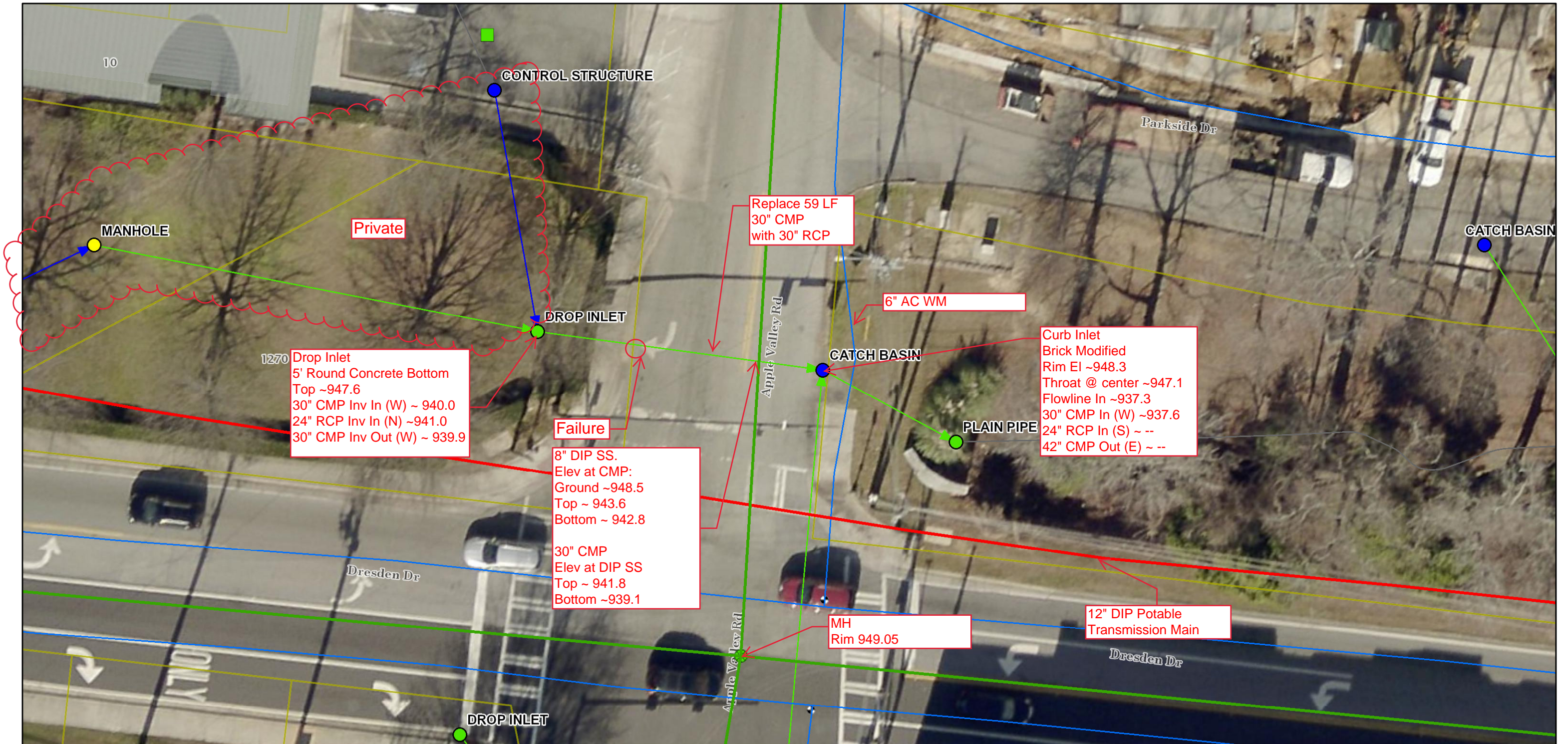


# Drainage System Repairs - Apple Valley at Dresden Dr



6/17/2020, 4:36:44 PM

Notes: Selected Contractor shall provide all services required to remove the existing 30" corrugated metal pipe (CMP) from catch basin to drop inlet and install 30" reinforced concrete pipe (RCP) from catch basin to drop inlet. The price shall include all costs, overhead, and profit required to complete the indicated work, any required ancillary work, and restoration of the area to pre-construction condition or better. Possible items to be removed and replaced/restored include, but are not necessarily limited to: pavement, sidewalk, curb & gutter, striping, traffic loop, holly bushes, and sod.

The holly bushes should be removed, protected, and stored on site for re-planting after backfilling and compaction have been completed. This work is part of the Scope of Work.

It is preferred that the hardwood tree next to the drop inlet not be removed, but equipment movements and the depth of excavation may require removal.

Elevations provided are from the best available sources, but the City makes no guarantee or warranty as to their accuracy.

