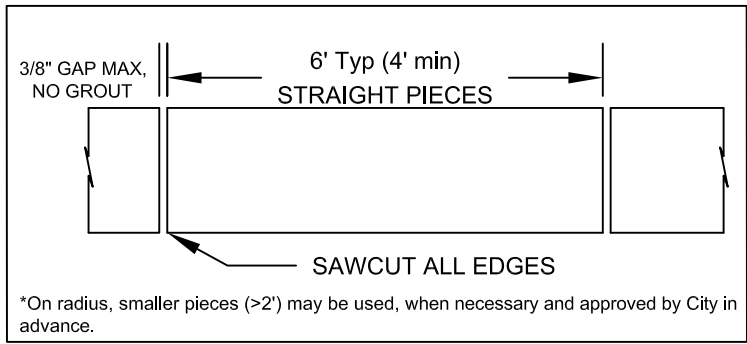
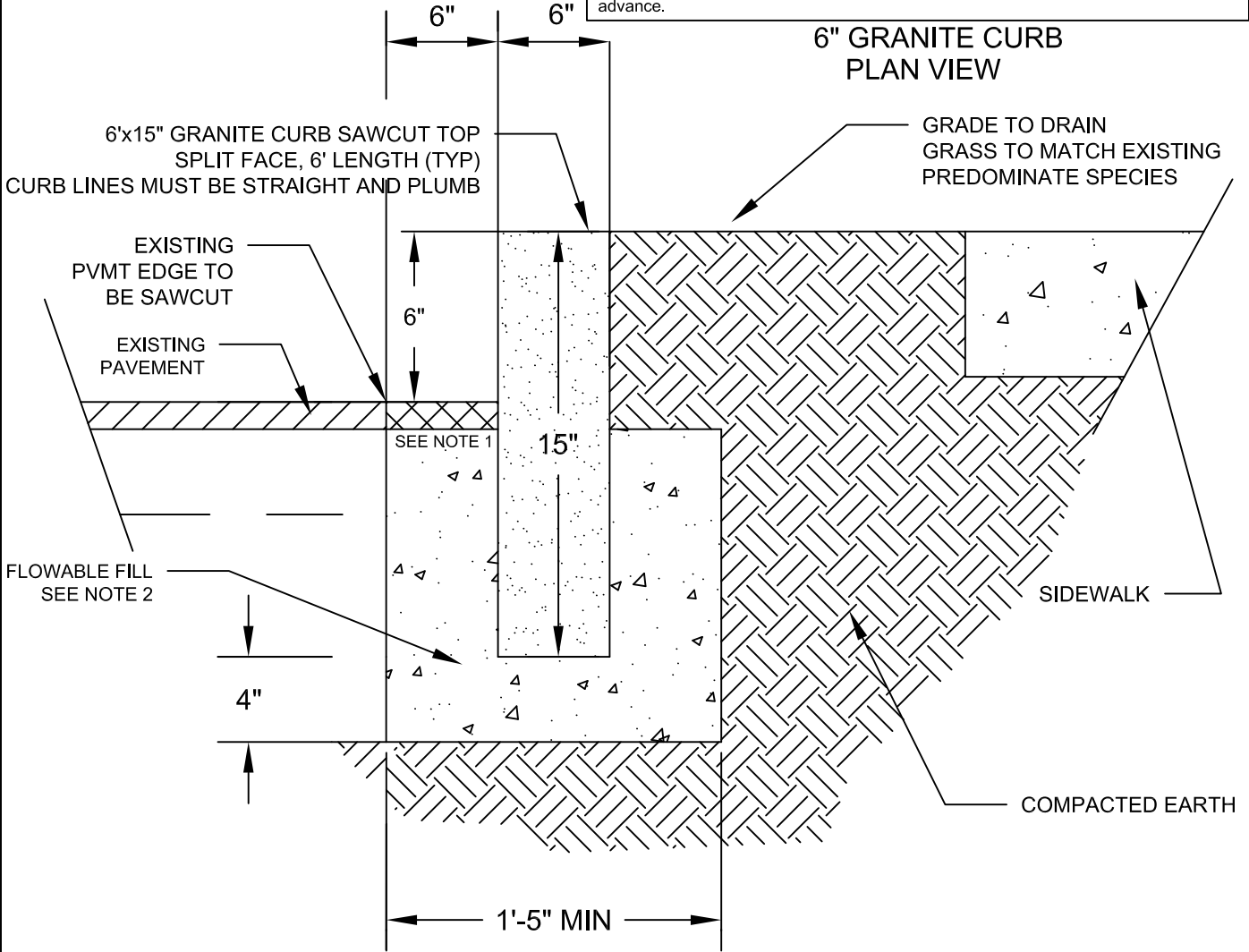


NOTES:

1. BACKFILL AROUND CURB TO 8" BELOW TOP. ONCE CURED, INSTALL AND TAMP APPROVED COLD PATCH (**EZ STREET** OR **PERMA PATCH**) TO MEET 6" CURB REVEAL.
2. PER GDOT SPECIFICATIONS: SECTION 600 CONTROLLED LOW STRENGTH FLOWABLE FILL, 125 PSI MIN.

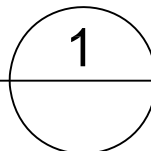


**6" GRANITE CURB
PLAN VIEW**



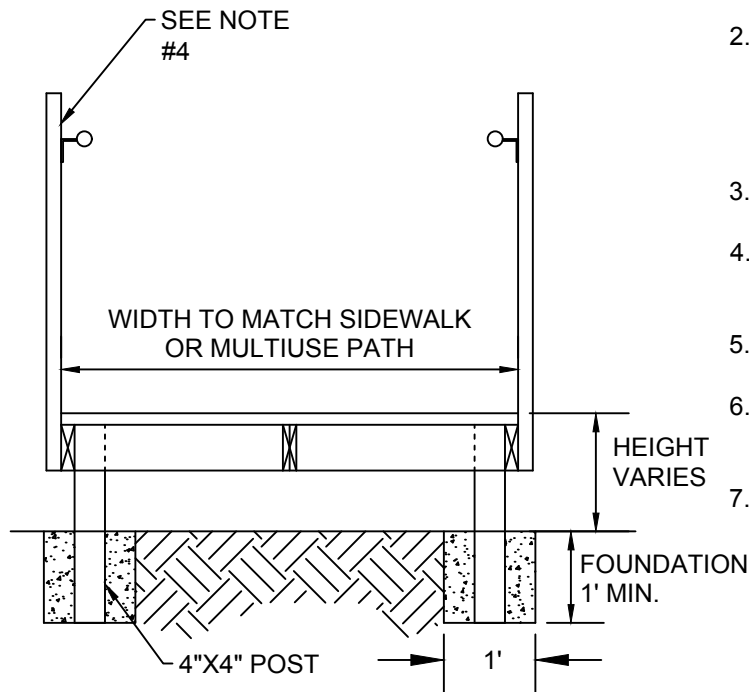
**6" GRANITE CURB
DETAIL**

SCALE: NTS



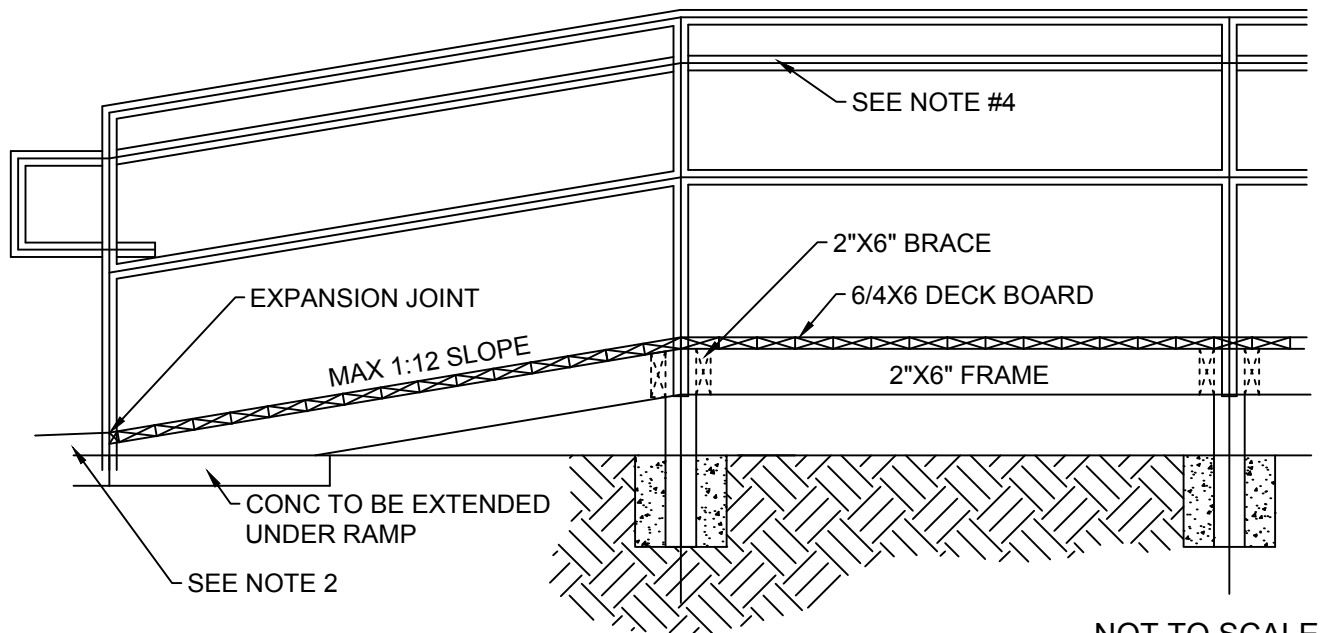
**CITY OF BROOKHAVEN
PUBLIC WORKS DEPARTMENT
GRANITE CURB DETAIL**

EFFECTIVE MARCH 1, 2023 FEB 2023



NOTES:

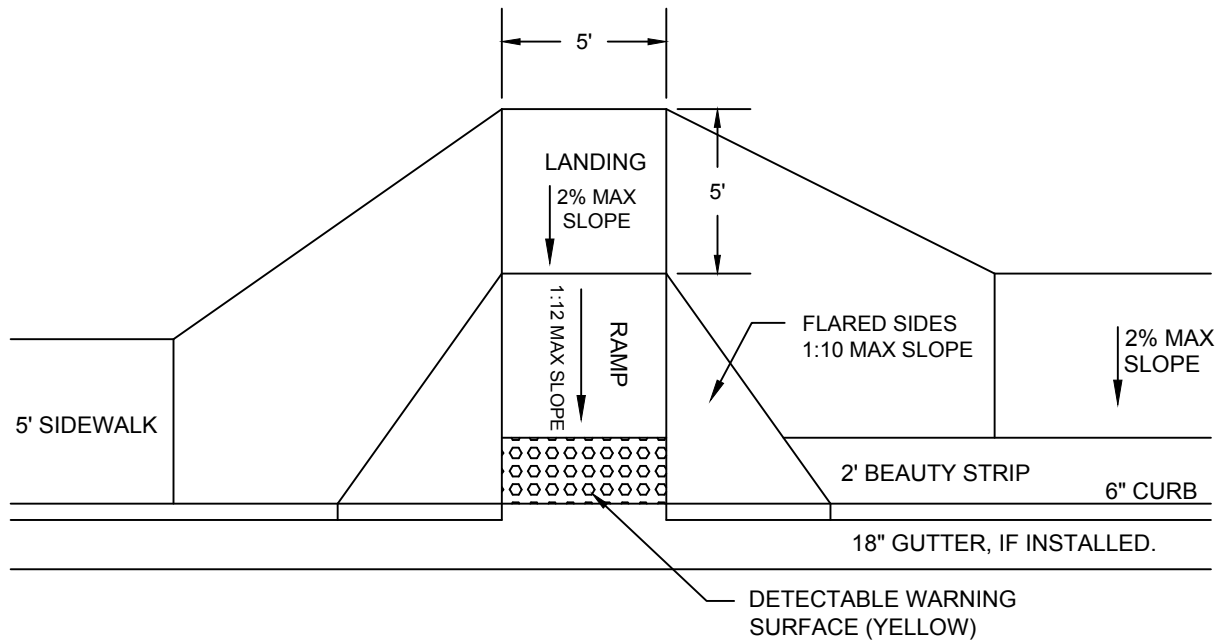
1. BOARDWALK FRAME TO BE PRESSURE TREATED LUMBER. DECK BOARD TO BE COMPOSITE BOARD.
2. SIDEWALK SECTION AT EACH END OF BOARDWALK TO BE ADJUSTED TO ALLOW BOARDWALK DECK TO BE FLUSH WITH WALK. SIDEWALK TO MAINTAIN MIN. THICKNESS OF 4".
3. BOARDWALK TO BE CONSTRUCTED TO CURRENT ADA SPECIFICATIONS.
4. RAIL TO BE CONSTRUCTED AS SPECIFIED IN CITY OF BROOKHAVEN RAMP AND HANDICAP RAIL DETAILS.
5. HANDRAILS TO BE CONSTRUCTED ON BOARDWALKS 18" OR HIGHER.
6. HANDICAP RAILS TO BE INSTALLED ON ALL RAMPED PORTIONS OF BOARDWALK AS PER ADA REQUIREMENTS.
7. BOARDWALKS TO BE CONSTRUCTED ADJACENT TO SPECIMEN TREES WHERE A STANDARD SIDEWALK WOULD IMPACT CRITICAL ROOT ZONE. STANDARD SIDEWALK TO BE UTILIZED OUTSIDE CRITICAL ROOT ZONE.



NOT TO SCALE

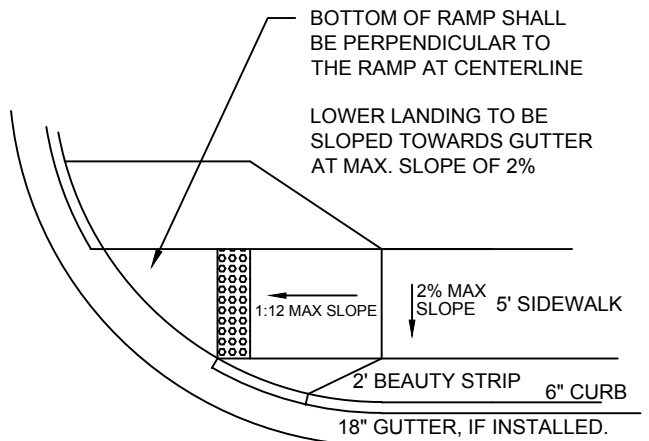


CITY OF BROOKHAVEN
PUBLIC WORKS DEPARTMENT
BOARDWALK DETAIL



GENERAL NOTES:

1. RAMP SHALL BE CONSTRUCTED FROM CONCRETE. SPECIFICATIONS FOR RAMP SHALL BE THE SAME AS FOR SIDEWALK. RAMP SHALL HAVE EITHER A ROUGH OR TEXTURED FINISH.
2. WHERE RAMP ARE LOCATED ON RADII, THE DIMENSIONS SHOWN FOR RAMP WIDTHS AND TAPERS ARE MEASURED PERPENDICULAR TO THE RAMP AND NOT ALONG THE CURVE.
3. WHERE UTILITY STRUCTURES CONFLICT, THERE SIDEWALK GEOMETRY VARIES, AT SKEWED INTERSECTIONS, OR IN OTHER SPECIAL CASES, THE RAMP DESIGNS MAY BE MODIFIED BY THE DESIGNER OR ENGINEER, PROVIDED THAT THE WIDTH REMAINS A MIN. OF 48" AND NO SLOPE ON THE ACCESSIBLE PART OF THE RAMP IS STEEPER THAT 12:1.
4. WHEN A CURB RAMP IS PLACED ON EXISTING PAVEMENT, THE PAVEMENT SHALL BE REMOVED TO PROVIDE A MINIMUM THICKNESS OF 3" OF CONCRETE AT ALL LOCATIONS.
5. DETECTABLE WARNING SURFACES ARE REQUIRED ON ALL INTERSECTIONS WITH PUBLIC STREETS, SIGNALIZED COMMERCIAL DRIVEWAYS, AND COMMERCIAL DRIVEWAYS WITH AN AADT OF 25 VPD.
6. REFERENCE SHOULD BE MADE TO GDOT STANDARD A3, SPECIAL DETAIL CONCRETE SIDEWALK DETAILS, CURB CUT (WHEELCHAIR) RAMP AND GDOT STANDARD A4, SPECIAL DETAIL DETECTABLE WARNING SURFACE TRUNCATED DOME SIZE, SPACING AND ALIGNMENT REQUIREMENTS.

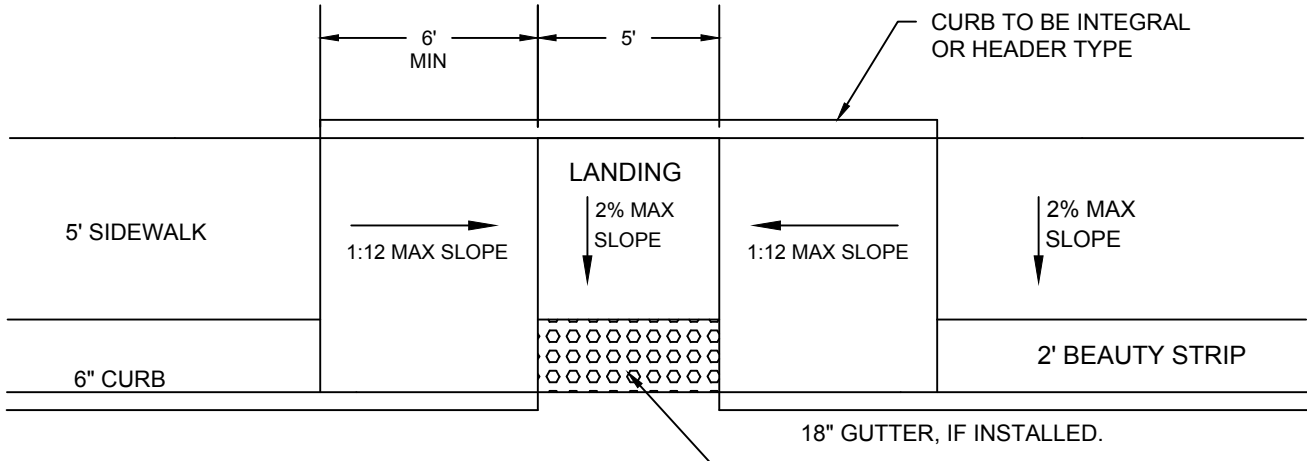


**SKEWED RAMP DETAIL
TYPE "A" AND "D" RAMP ONLY**

NOT TO SCALE

**CITY OF BROOKHAVEN
PUBLIC WORKS DEPARTMENT
HANDICAP RAMP
TYPE "A"**





NOTE:
 WHERE SIDEWALK ABUTS BACK OF CURB
 LANDING AREA MAY BE REDUCED TO 3' MIN
 DEPTH BEHIND DETECTABLE WARNING SURFACE.

DETECTABLE WARNING
 SURFACE (YELLOW)

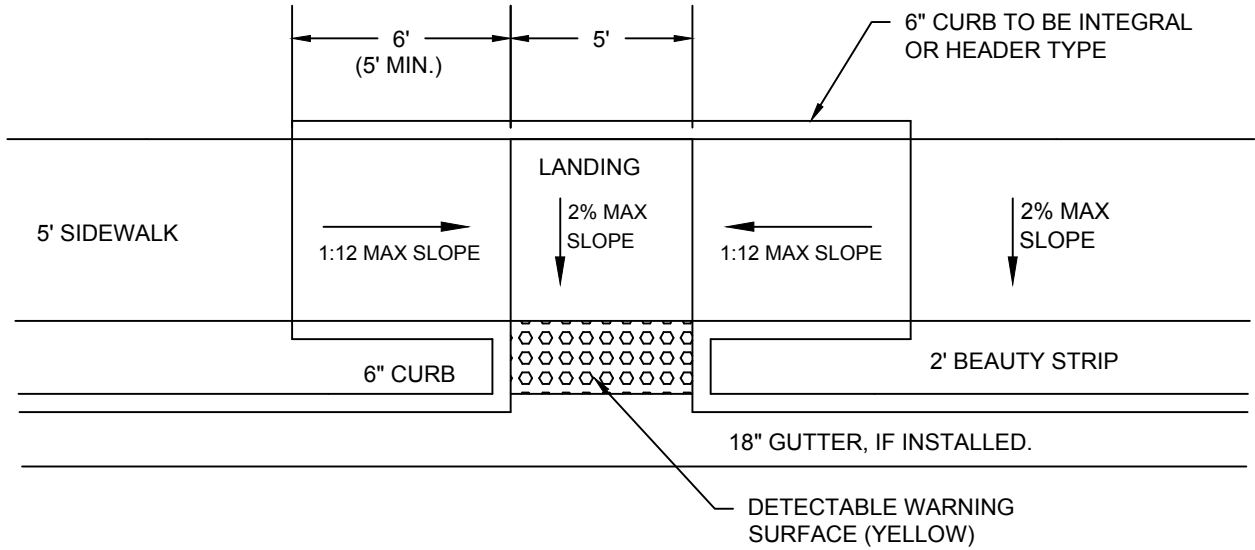
GENERAL NOTES:

1. RAMPS SHALL BE CONSTRUCTED FROM CONCRETE. SPECIFICATIONS FOR RAMPS SHALL BE THE SAME AS FOR SIDEWALK. RAMPS SHALL HAVE EITHER A ROUGH OR TEXTURED FINISH.
2. WHERE RAMPS ARE LOCATED ON RADII, THE DIMENSIONS SHOWN FOR RAMP WIDTHS AND TAPERS ARE MEASURED PERPENDICULAR TO THE RAMP AND NOT ALONG THE CURVE.
3. WHERE UTILITY STRUCTURES CONFLICT, THERE SIDEWALK GEOMETRY VARIES, AT SKEWED INTERSECTIONS, OR IN OTHER SPECIAL CASES, THE RAMP DESIGNS MAY BE MODIFIED BY THE DESIGNER OR ENGINEER, PROVIDED THAT THE WIDTH REMAINS A MIN. OF 48" AND NO SLOPE ON THE ACCESSIBLE PART OF THE RAMP IS STEEPER THAN 12:1.
4. WHEN A CURB RAMP IS PLACED ON EXISTING PAVEMENT, THE PAVEMENT SHALL BE REMOVED TO PROVIDE A MINIMUM THICKNESS OF 3" OF CONCRETE AT ALL LOCATIONS.
5. DETECTABLE WARNING SURFACES ARE REQUIRED ON ALL INTERSECTIONS WITH PUBLIC STREETS, SIGNALIZED COMMERCIAL DRIVEWAYS, AND COMMERCIAL DRIVEWAYS WITH AN AADT OF 25 VPD.
6. REFERENCE SHOULD BE MADE TO GDOT STANDARD A3, SPECIAL DETAIL CONCRETE SIDEWALK DETAILS, CURB CUT (WHEELCHAIR) RAMPS AND GDOT STANDARD A4, SPECIAL DETAIL DETECTABLE WARNING SURFACE TRUNCATED DOME SIZE, SPACING AND ALIGNMENT REQUIREMENTS.

NOT TO SCALE

CITY OF BROOKHAVEN
 PUBLIC WORKS DEPARTMENT
 HANDICAP RAMP
 TYPE "B"





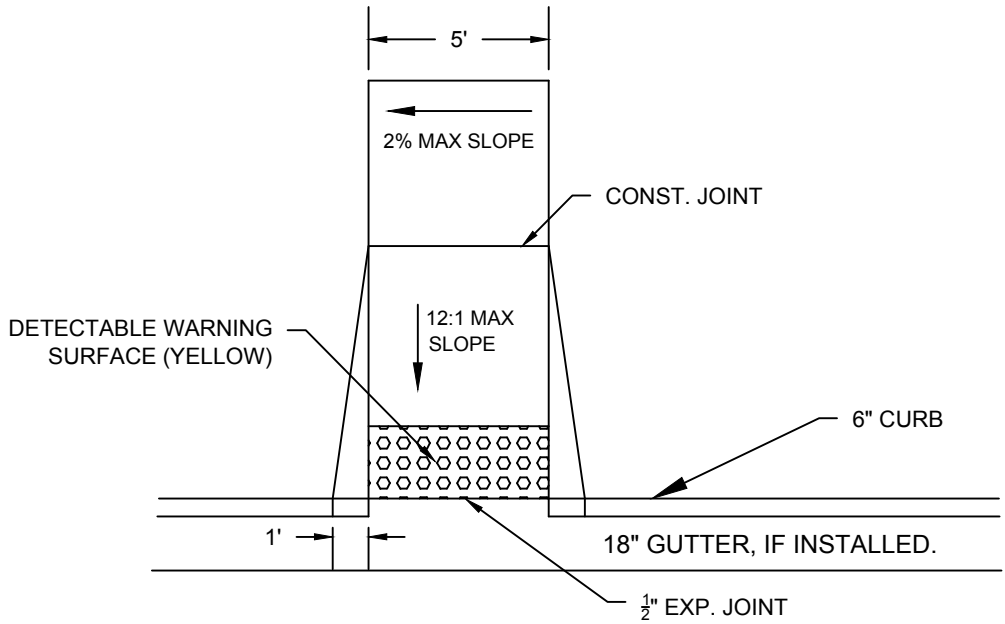
GENERAL NOTES:

1. RAMPS SHALL BE CONSTRUCTED FROM CONCRETE. SPECIFICATIONS FOR RAMPS SHALL BE THE SAME AS FOR SIDEWALK. RAMPS SHALL HAVE EITHER A ROUGH OR TEXTURED FINISH.
2. WHERE RAMPS ARE LOCATED ON RADII, THE DIMENSIONS SHOWN FOR RAMP WIDTHS AND TAPERS ARE MEASURED PERPENDICULAR TO THE RAMP AND NOT ALONG THE CURVE.
3. WHERE UTILITY STRUCTURES CONFLICT, THERE SIDEWALK GEOMETRY VARIES, AT SKEWED INTERSECTIONS, OR IN OTHER SPECIAL CASES, THE RAMP DESIGNS MAY BE MODIFIED BY THE DESIGNER OR ENGINEER, PROVIDED THAT THE WIDTH REMAINS A MIN. OF 48" AND NO SLOPE ON THE ACCESSIBLE PART OF THE RAMP IS STEEPER THAT 12:1.
4. WHEN A CURB RAMP IS PLACED ON EXISTING PAVEMENT, THE PAVEMENT SHALL BE REMOVED TO PROVIDE A MINIMUM THICKNESS OF 3" OF CONCRETE AT ALL LOCATIONS.
5. DETECTABLE WARNING SURFACES ARE REQUIRED ON ALL INTERSECTIONS WITH PUBLIC STREETS, SIGNALIZED COMMERCIAL DRIVEWAYS, AND COMMERCIAL DRIVEWAYS WITH AN AADT OF 25 VPD.
6. REFERENCE SHOULD BE MADE TO GDOT STANDARD A3, SPECIAL DETAIL CONCRETE SIDEWALK DETAILS, CURB CUT (WHEELCHAIR) RAMPS AND GDOT STANDARD A4, SPECIAL DETAIL DETECTABLE WARNING SURFACE TRUNCATED DOME SIZE, SPACING AND ALIGNMENT REQUIREMENTS.

NOT TO SCALE

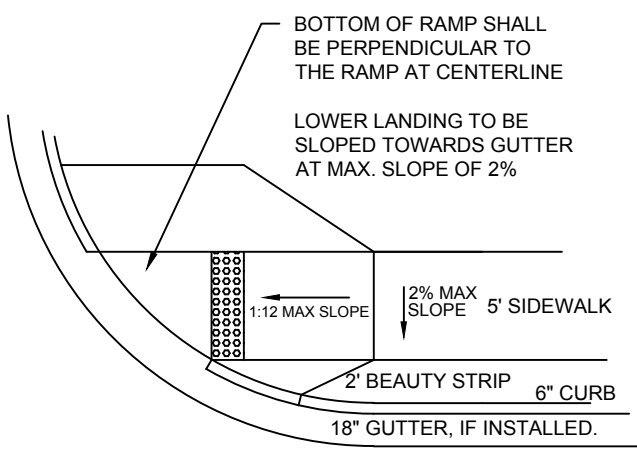
CITY OF BROOKHAVEN
 PUBLIC WORKS DEPARTMENT
 HANDICAP RAMP
 TYPE "C"
 PARALLEL ALIGNMENT





GENERAL NOTES:

1. RAMPS SHALL BE CONSTRUCTED FROM CONCRETE. SPECIFICATIONS FOR RAMPS SHALL BE THE SAME AS FOR SIDEWALK. RAMPS SHALL HAVE EITHER A ROUGH OR TEXTURED FINISH.
2. WHERE RAMPS ARE LOCATED ON RADII, THE DIMENSIONS SHOWN FOR RAMP WIDTHS AND TAPERS ARE MEASURED PERPENDICULAR TO THE RAMP AND NOT ALONG THE CURVE.
3. WHERE UTILITY STRUCTURES CONFLICT, THERE SIDEWALK GEOMETRY VARIES, AT SKEWED INTERSECTIONS, OR IN OTHER SPECIAL CASES, THE RAMP DESIGNS MAY BE MODIFIED BY THE DESIGNER OR ENGINEER, PROVIDED THAT THE WIDTH REMAINS A MIN. OF 48" AND NO SLOPE ON THE ACCESSIBLE PART OF THE RAMP IS STEEPER THAT 12:1.
4. WHEN A CURB RAMP IS PLACED ON EXISTING PAVEMENT, THE PAVEMENT SHALL BE REMOVED TO PROVIDE A MINIMUM THICKNESS OF 3" OF CONCRETE AT ALL LOCATIONS.
5. DETECTABLE WARNING SURFACES ARE REQUIRED ON ALL INTERSECTIONS WITH PUBLIC STREETS, SIGNALIZED COMMERCIAL DRIVEWAYS, AND COMMERCIAL DRIVEWAYS WITH AN AADT OF 25 VPD.
6. REFERENCE SHOULD BE MADE TO GDOT STANDARD A3, SPECIAL DETAIL CONCRETE SIDEWALK DETAILS, CURB CUT (WHEELCHAIR) RAMPS AND GDOT STANDARD A4, SPECIAL DETAIL DETECTABLE WARNING SURFACE TRUNCATED DOME SIZE, SPACING AND ALIGNMENT REQUIREMENTS.

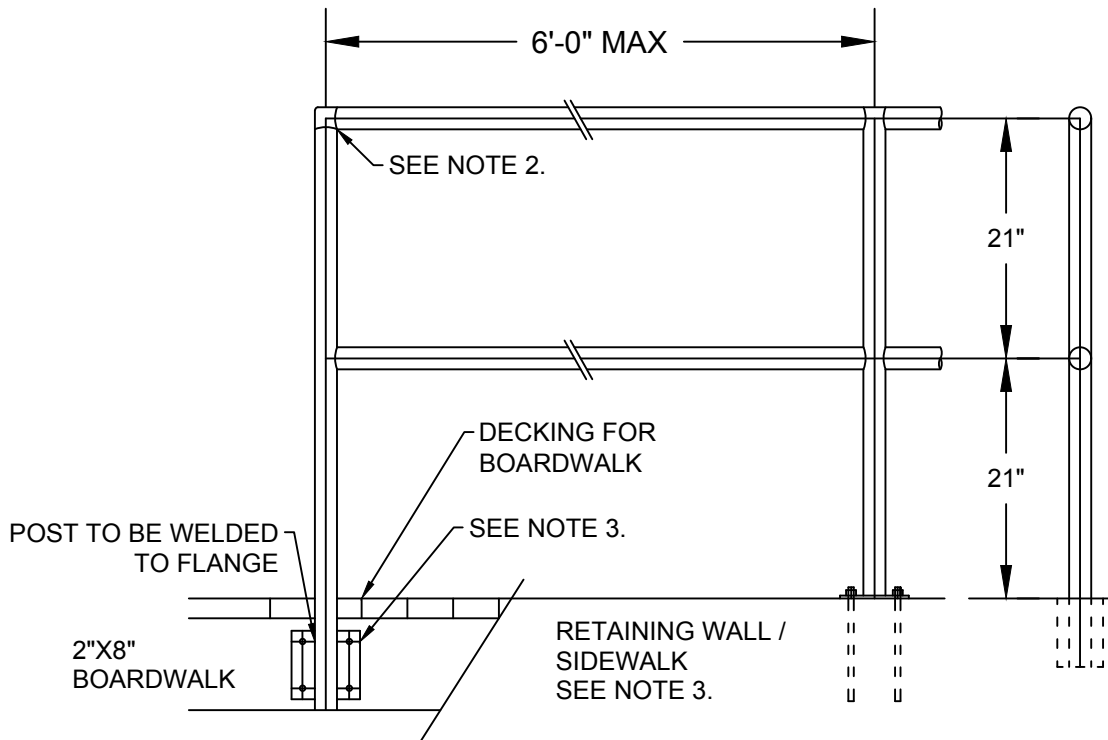


SKEWED RAMP DETAIL
TYPE "A" AND "D" RAMPS ONLY

NOT TO SCALE

CITY OF BROOKHAVEN
PUBLIC WORKS DEPARTMENT
HANDICAP RAMP
TYPE "D"





NOTES:

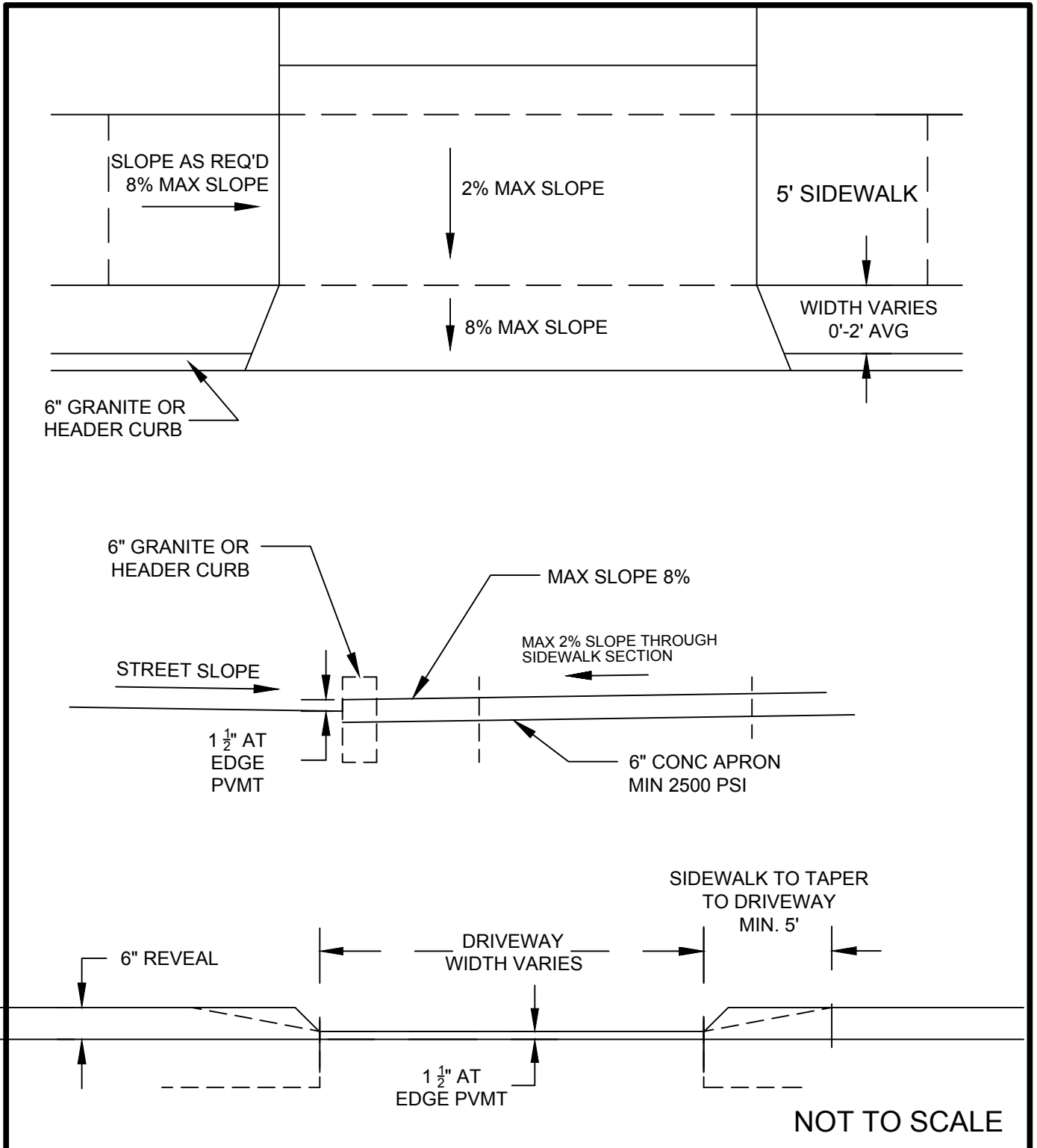
1. HANDRAIL AND POST SHALL BE 1.9" NON-GALVANIZED STEEL PIPE, BLACK POWDER COATED OR 1.9" ALUMINUM BLACK POLYKOTE 2240 PIPE. ASSOCIATED HARDWARE SHALL ALSO BE BLACK POWDER COATED.
2. JOINTS-
 - A. NON-GALVANIZED BLACK POWDER COATED STEEL FITTINGS OR COUPLINGS MAY BE USED AT JOINTS IF RAIL IS PRE-FABRICATED.
 - B. IF RAIL IS CONSTRUCTED ON-SITE, JOINTS MAY BE WELDED. IF WELDED, ALL EXPOSED JOINTS SHALL BE FINISHED BY GRINDING OR FILING TO GIVE A NEAT APPEARANCE. ALL DAMAGE TO STEEL SHALL BE REPAIRED IN ACCORDANCE WITH GDOT STANDARD SPECIFICATIONS. JOINTS TO BE PAINTED BLACK AFTER INSTALLATION.
3. FOOTINGS -
 - A. POST MAY BE WELDED TO $\frac{1}{4}$ " X 6" NON-GALVANIZED BLACK POWDER COATED FLOOR FLANGES AND ANCHORED WITH 4 - $\frac{1}{2}$ " X $3\frac{1}{2}$ " NON-GALVANIZED BLACK POWDER COATED ANCHOR BOLTS. OR
 - B. POST MAY BE WELDED TO $\frac{1}{4}$ " X 6" NON-GALVANIZED BLACK POWDER COATED FLANGES AND ANCHORED WITH 4 - $1\frac{1}{2}$ " X 4" NON-GALVANIZED BLACK POWDER COATED BOLTS TO THE SIDE OF A WOODEN BOARDWALK. OR
 - C. POST MAY BE GROUTED IN 6" DEEP, 4" DIA. HOLE IN RETAINING WALLS. POST TO BE LENGTHENED TO ALLOW HEIGHT ABOVE WALL OR SIDEWALK TO REMAIN AS SPECIFIED.
4. 1.9" DENOTES O.D. FOR RAIL SECTIONS W/ I.D - $1\frac{1}{2}$ ".

NOT TO SCALE



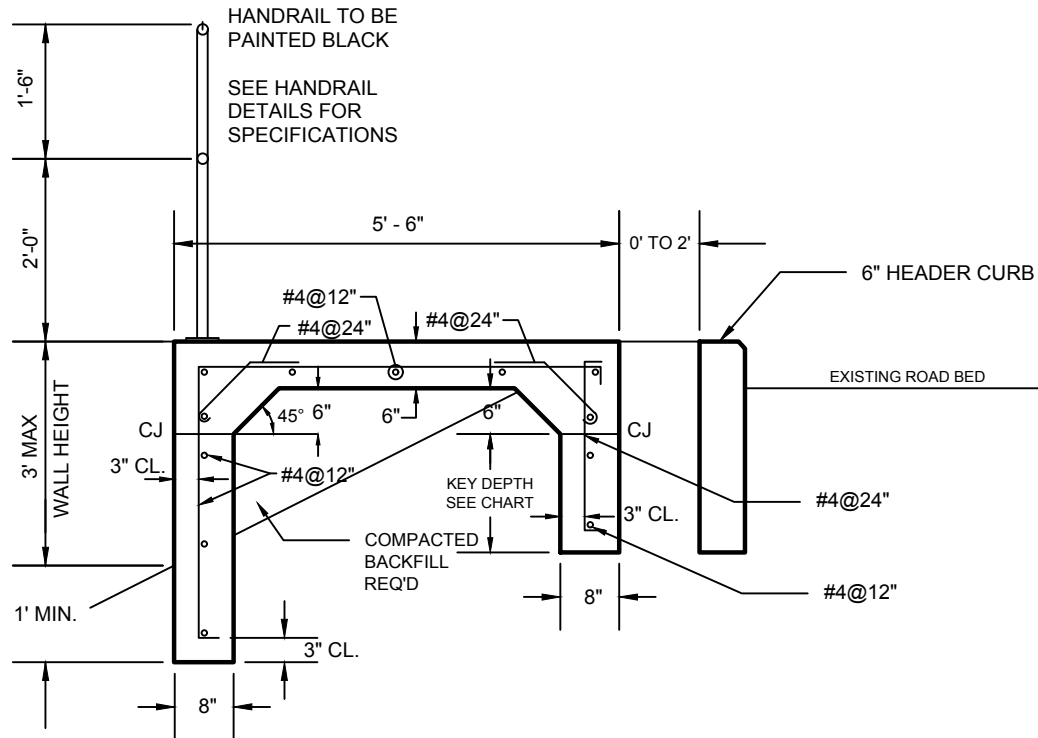
**CITY OF BROOKHAVEN
PUBLIC WORKS DEPARTMENT
HANDRAIL DETAIL**

MAY 2019



CITY OF BROOKHAVEN
PUBLIC WORKS DEPARTMENT
RESIDENTIAL DRIVEWAY DETAIL
AT GRANITE HEADER CURB

APRIL 2018, UPDATED JUNE 3, 2019



WALL HEIGHT	KEY DEPTH
1' - 0"	1' - 0" MIN.
2' - 0"	1' - 4"
3' - 0" MAX	1' - 8"

LOADS:
SURCHARGE - 0 PSF

MATERIALS:
CONCRETE ----- $f_c = 2,500$ PSI (MIN)
REINFORCING ----- $f_y = 60,000$ PSI

SOIL PROPERTIES:
SOIL WEIGHT = 110 PCF
 $\phi = 28^\circ$
C = 0
ALLOWABLE SOIL PRESSURE = 3,000 PSF

- NOTE:
1. CONTRACTOR MUST TEMPORARILY SUPPORT FOOTING WALLS UNTIL TOP SLAB IS IN PLACE.
 2. CONTRACTOR TO PROVIDE COMPACTED BACKFILL UNDER SLAB.

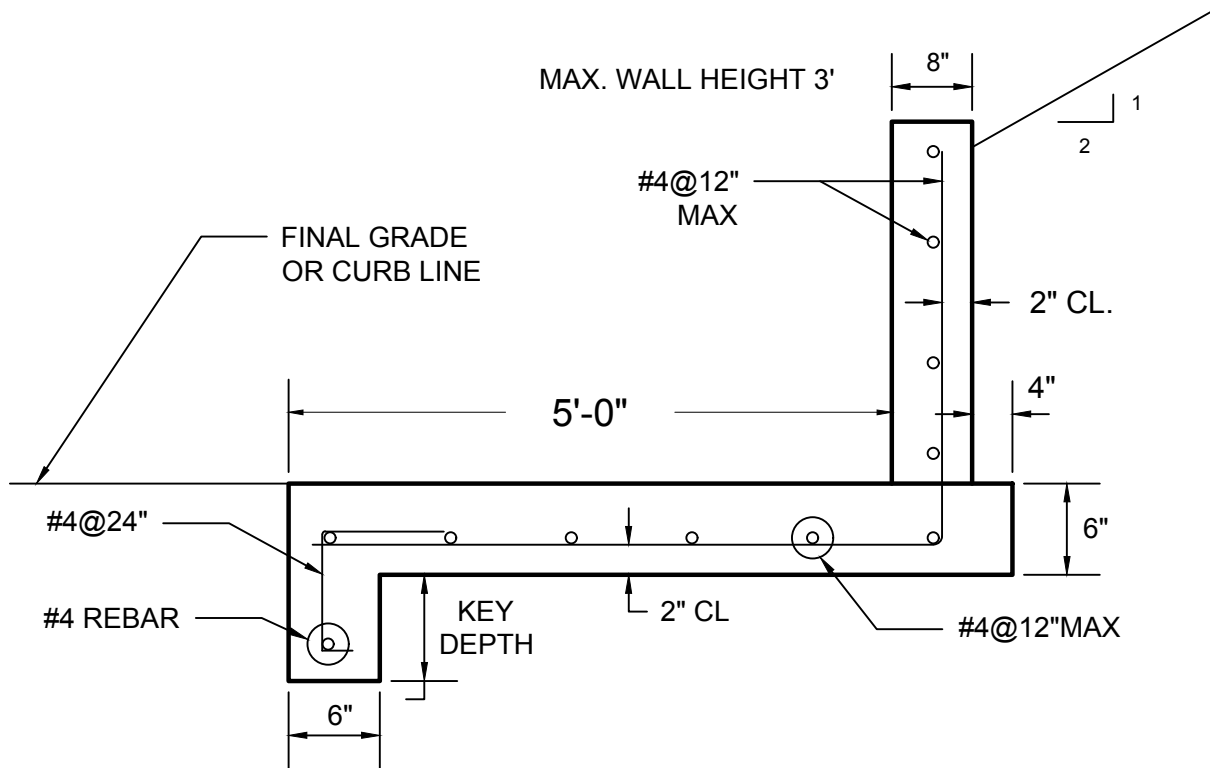
NOT TO SCALE



CITY OF BROOKHAVEN
PUBLIC WORKS DEPARTMENT
TURN DOWN WALL DETAIL
FOR 5' SIDEWALK

APRIL 2018, REVISED JUNE 3, 2019

NOTE:
 REINFORCEMENT DETAIL LIMITED TO
 WALL HEIGHTS OF 1'-6" - 3'-0". SECTIONS
 LOWER THAN 1'-6" MAY UTILIZE STANDARD 4"
 SIDEWALK AND UNREINFORCED HEADER CURB.



WALL HEIGHT	KEY DEPTH
1' - 6"	0'
2' - 0"	6" MIN
2'-6"	0'-9"
3'-0"	1'-0"

LOADS:
 SURCHARGE - 0 PSF

MATERIALS:
 CONCRETE ----- $f_c = 2,500$ PSI (MIN)
 REINFORCING ----- $f_y = 60,000$ PSI

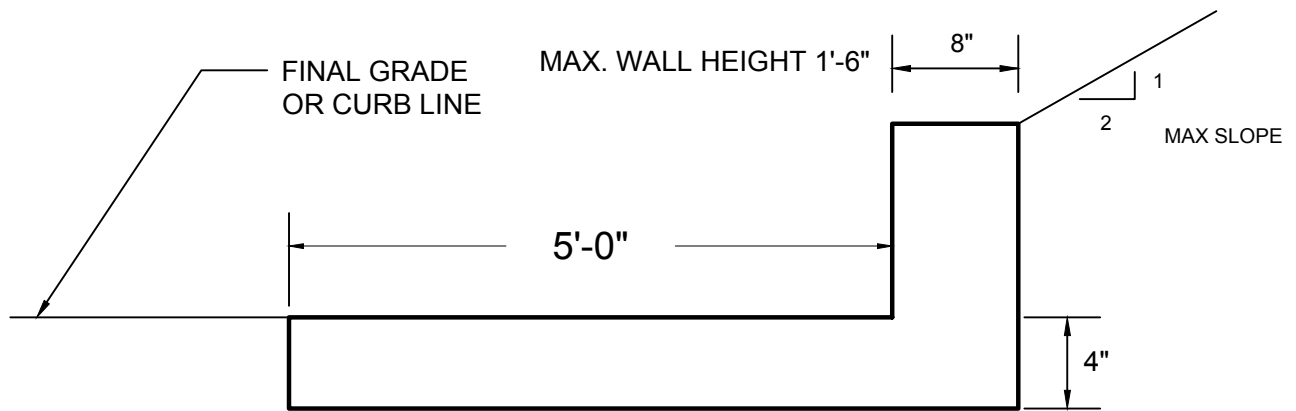
SOIL PROPERTIES:
 SOIL WEIGHT = 110 PCF
 $\phi = 28^\circ$
 $C = 0$
 ALLOWABLE SOIL PRESSURE = 3,000 PSF

NOT TO SCALE



CITY OF BROOKHAVEN
 PUBLIC WORKS DEPARTMENT
 TURN UP WALL DETAIL
 FOR 5' SIDEWALK

APRIL 2018, REVISED JUNE 3, 2019



NO REINFORCEMENT REQUIRED
MIN. 2500 PSI CONCRETE

NOT TO SCALE

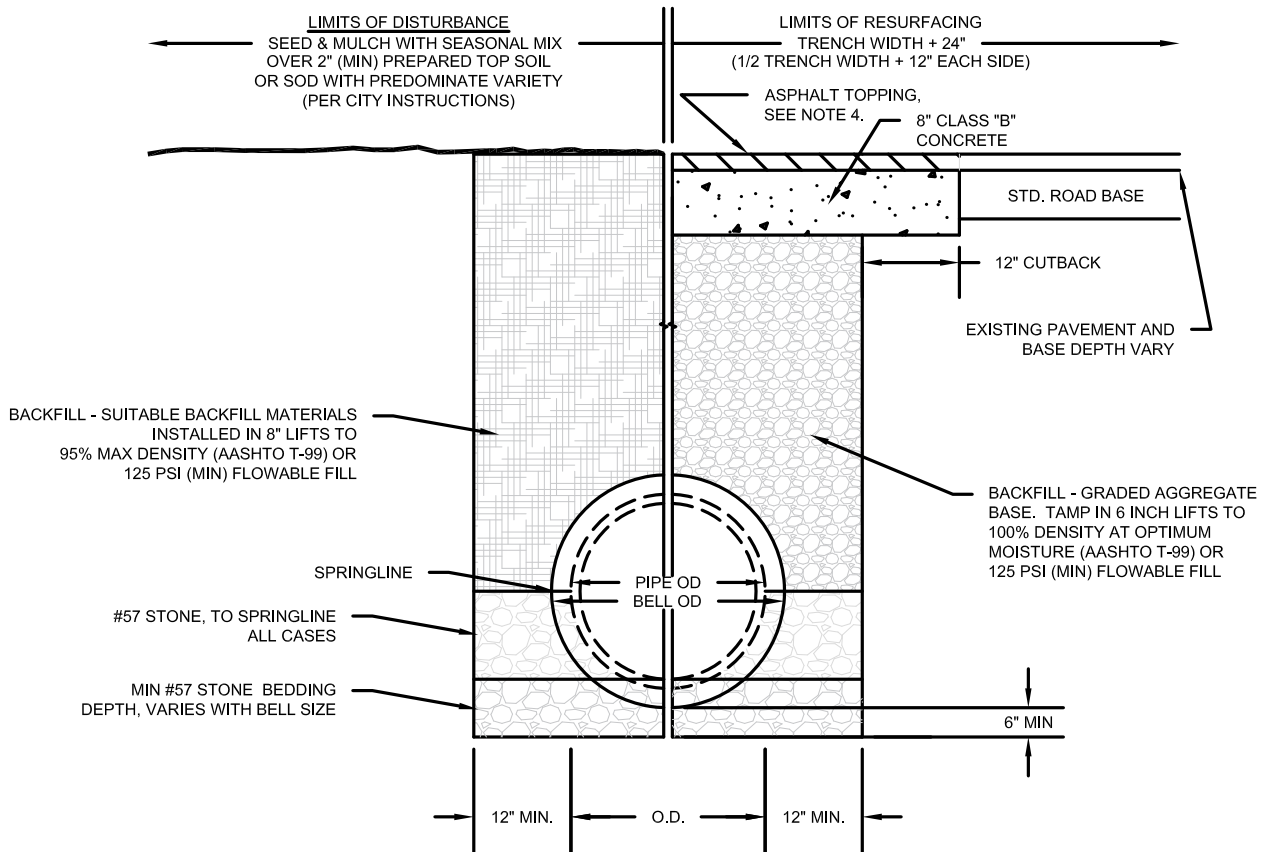


CITY OF BROOKHAVEN
PUBLIC WORKS DEPARTMENT
HEADER CURB DETAIL
FOR 5' SIDEWALK

APRIL 2018 - REVISED JUNE 3, 2019

TRENCH CUTS IN VEGETATED AREAS

TRENCH CUTS IN PAVED AREAS



NOTES:

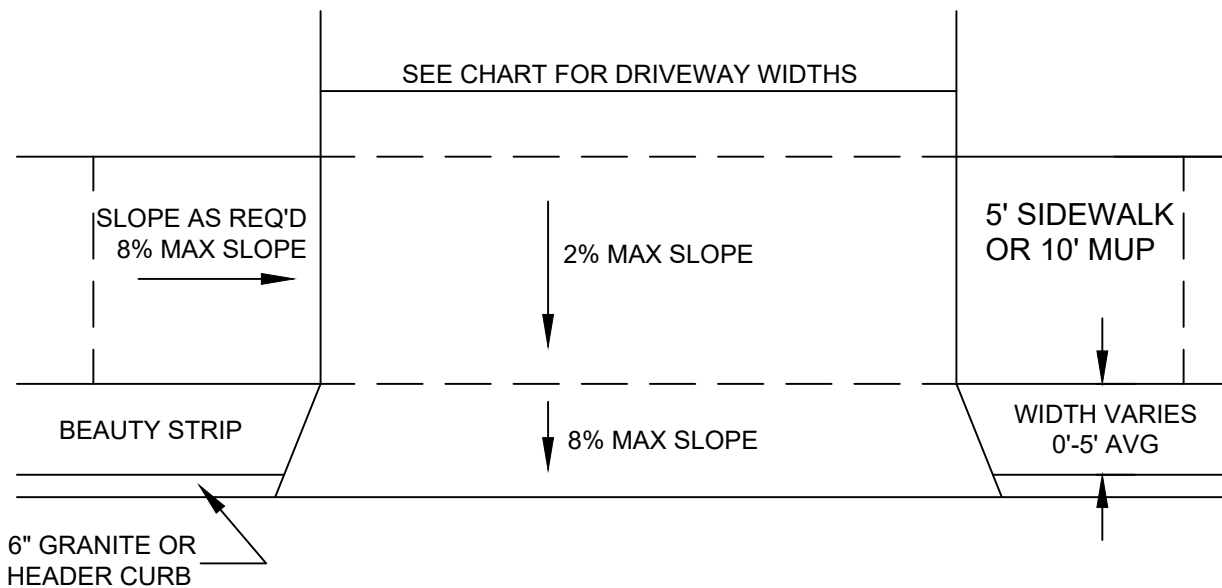
1. ALL STREET CUTS MUST BE COVERED WITH STEEL PLATES OF SUFFICIENT THICKNESS TO SPAN THE CUT WITHOUT NOTICEABLE DEFLECTION. PLATES TO REMAIN IN PLACE UNTIL CONCRETE BASE HAS GAINED SUFFICIENT STRENGTH TO WITHSTAND TRAFFIC LOADS (24 HOUR MIN.) STEEL PLATE TO BE HELD IN PLACE WITH TEMPORARY ASPHALT WHEN TRENCH CUT IS LOCATED ON STREETS WITH A SLOPE GREATER THAN 4% OR IN AREAS OF HIGH TRAFFIC VOLUME.
2. ON LONGITUDINAL CUTS EXCEEDING 50 FEET IN LENGTH AND AT THE DIRECTION OF THE CITY, THE ENTIRE WIDTH OF THE ROADWAY OR LANE SHALL BE MILLED AND RESURFACED.
3. ON LONGITUDINAL CUTS LESS THAN 50 FEET, IF LIMITS OF RESURFACING AS DEPICTED ON DETAIL LIES WITHIN 2' OF EXISTING EDGE OF PAVEMENT, RESURFACING IS TO BE EXTENDED TO EDGE OF PAVEMENT.
4. ASPHALT SURFACE COAT TO BE AS FOLLOWS:
 - A. LOCAL STREETS (RESIDENTIAL) - MIN. 2" 9.5 MM SUPERPAVE TOPPING.
 - B. COLLECTOR AND GREATER (COMMERCIAL/ INDUSTRIAL) STREETS - MIN 3" 12.5 MM SUPERPAVE TOPPING.
5. ALLOWABLE PIPE MATERIALS:
ALL AREAS, INCLUDING UNDER ROADS (IN ORDER OF PREFERENCE):
 - A. CLASS "B" REINFORCED CONCRETE PIPE (RCP),
 - B. DUCTILE IRON PIPE, PER DIPRA "DUCTILE IRON PIPE FOR WASTEWATER APPLICATIONS", WITH WRITTEN CITY APPROVAL.,
 - C. CONTECH A-2000 PVC STORMWATER PIPE,
 - D. ADS HP STORM DUAL WALL PP PIPE
 - E. ADS N-12 WT DUAL WALL HDPE DRAINAGE PIPE, WITH WRITTEN CITY APPROVAL
6. CORRUGATED METAL PIPE (CMP) IS NOT PERMITTED ON CITY PROJECTS / IN CITY ROW
7. FLOWABLE FILL: GDOT SECTION 600 CONTROLLED LOW STRENGTH FLOWABLE FILL ALLOWED AS BACKFILL, MIN 125 PSI.

NOT TO SCALE



CITY OF BROOKHAVEN
PUBLIC WORKS DEPARTMENT
TRENCH EXCAVATION
ALL CASES

(JAN 2023)



DRIVEWAY WIDTH

TYPE	MINIMUM	MAXIMUM
RESIDENTIAL - SINGLE CAR GARAGE	10'	12'
RESIDENTIAL - TWO OR MORE CAR GARAGE	10'	20'
COMMERCIAL - ONE WAY	12'	20'
COMMERCIAL - TWO WAY	12'	24'

NOTES:

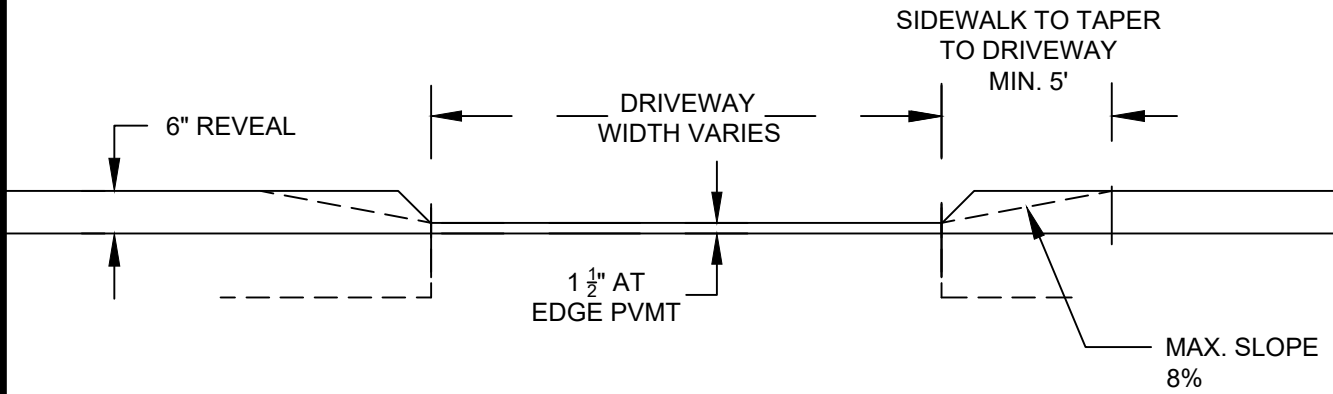
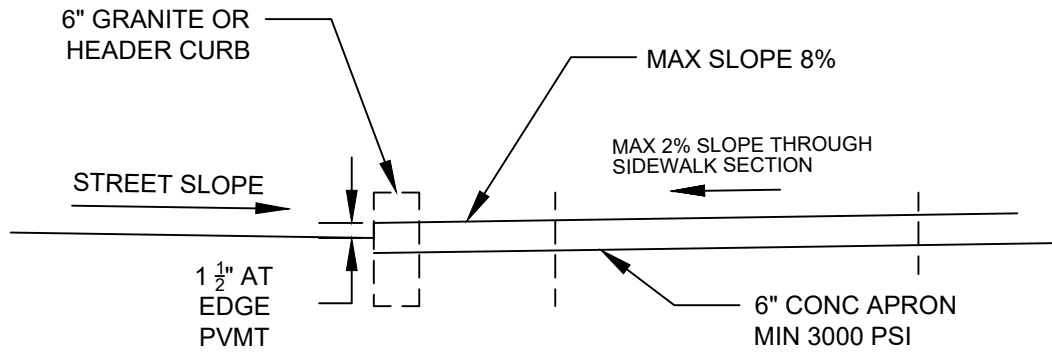
1. DRIVEWAYS SHALL BE CONSTRUCTED ACCORDING TO CITY STANDARDS IN 3000 PSI CONCRETE.
2. ORNAMENTAL BRICK OR STONEMWORK IN DRIVEWAY TO BE OUTSIDE LIMITS OF RIGHT-OF-WAY.
3. NO MATERIALS OTHER THAN CONCRETE SHALL BE USED FOR DRIVEWAY CONSTRUCTION.
4. ORNAMENTAL MAILBOXES ARE NOT PERMITTED WITHIN LIMITS OF RIGHT-OF-WAY. REMOVAL OF ORNAMENTAL MAILBOXES DUE TO ROADWAY OR OTHER INFRASTRUCTURE IMPROVEMENTS SHALL BE DONE AT PROPERTY OWNER EXPENSE.

NOT TO SCALE



CITY OF BROOKHAVEN
PUBLIC WORKS DEPARTMENT
DRIVEWAY DETAIL
SHEET 1 OF 2

DATE: DECEMBER 29, 2020



NOT TO SCALE



CITY OF BROOKHAVEN
PUBLIC WORKS DEPARTMENT
DRIVEWAY DETAIL
SHEET 2 OF 2

DATE: DECEMBER 29, 2020