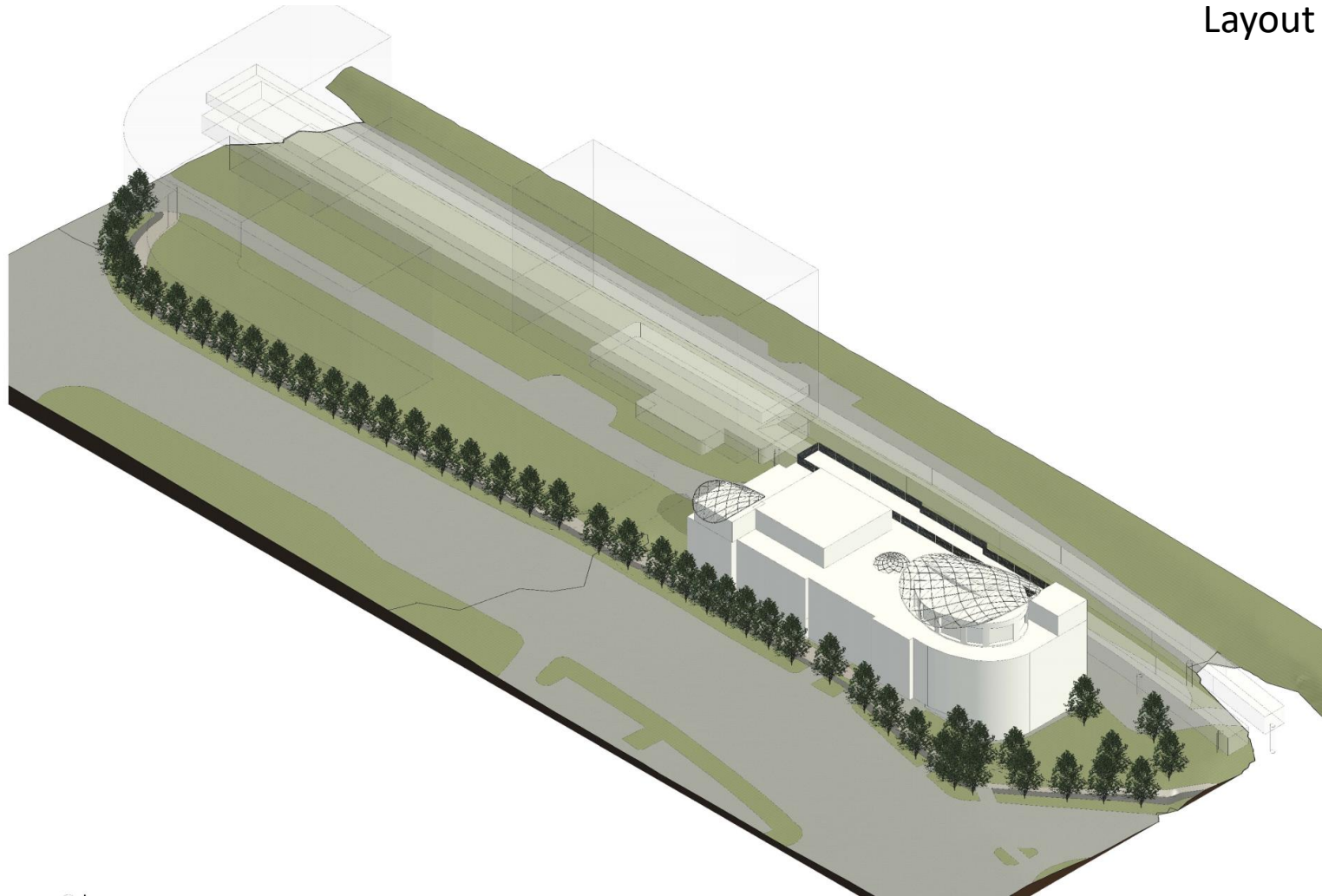


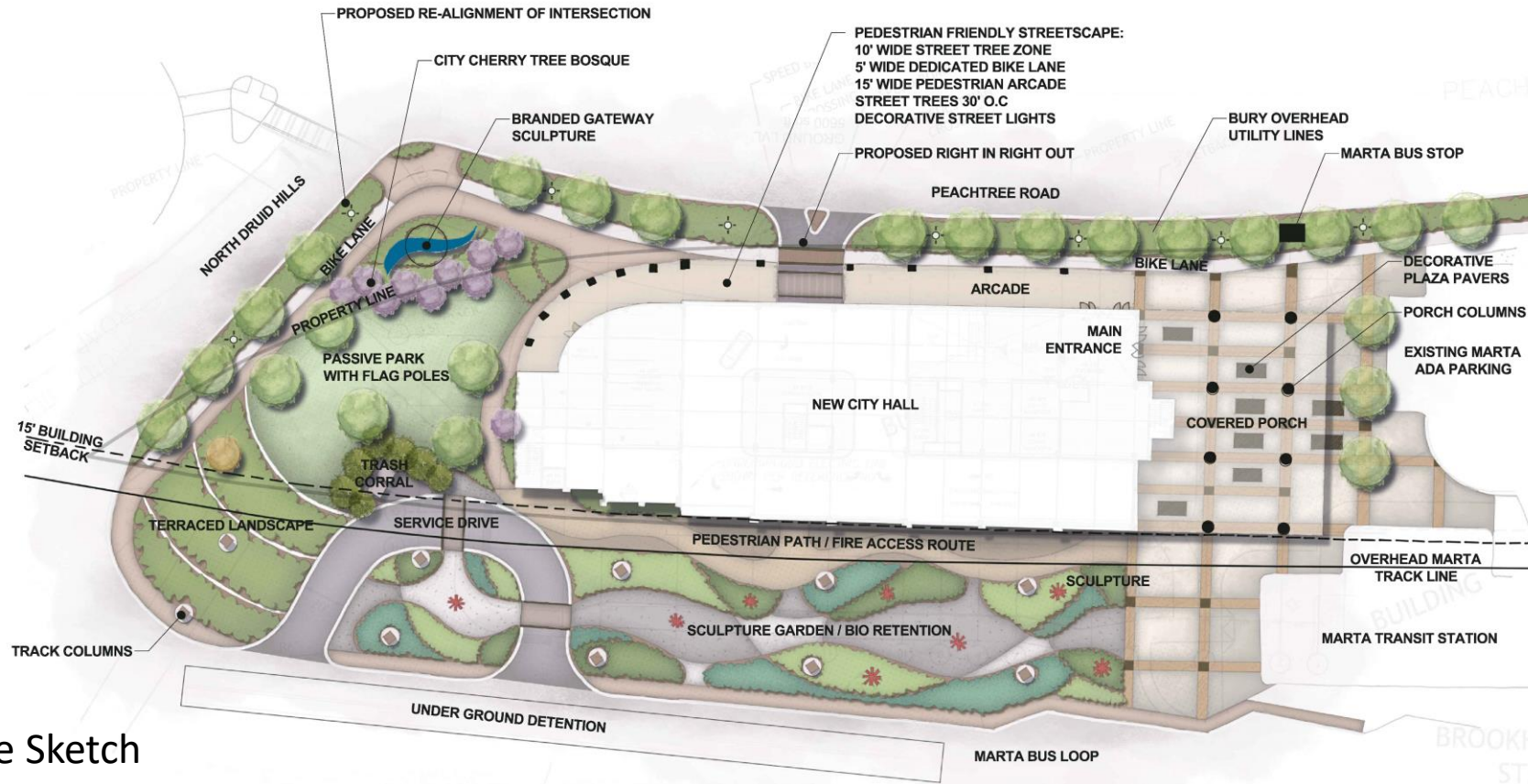
BROOKHAVEN CITY HALL

Schematic Design Massing and
Layout Document. 12/13/2022



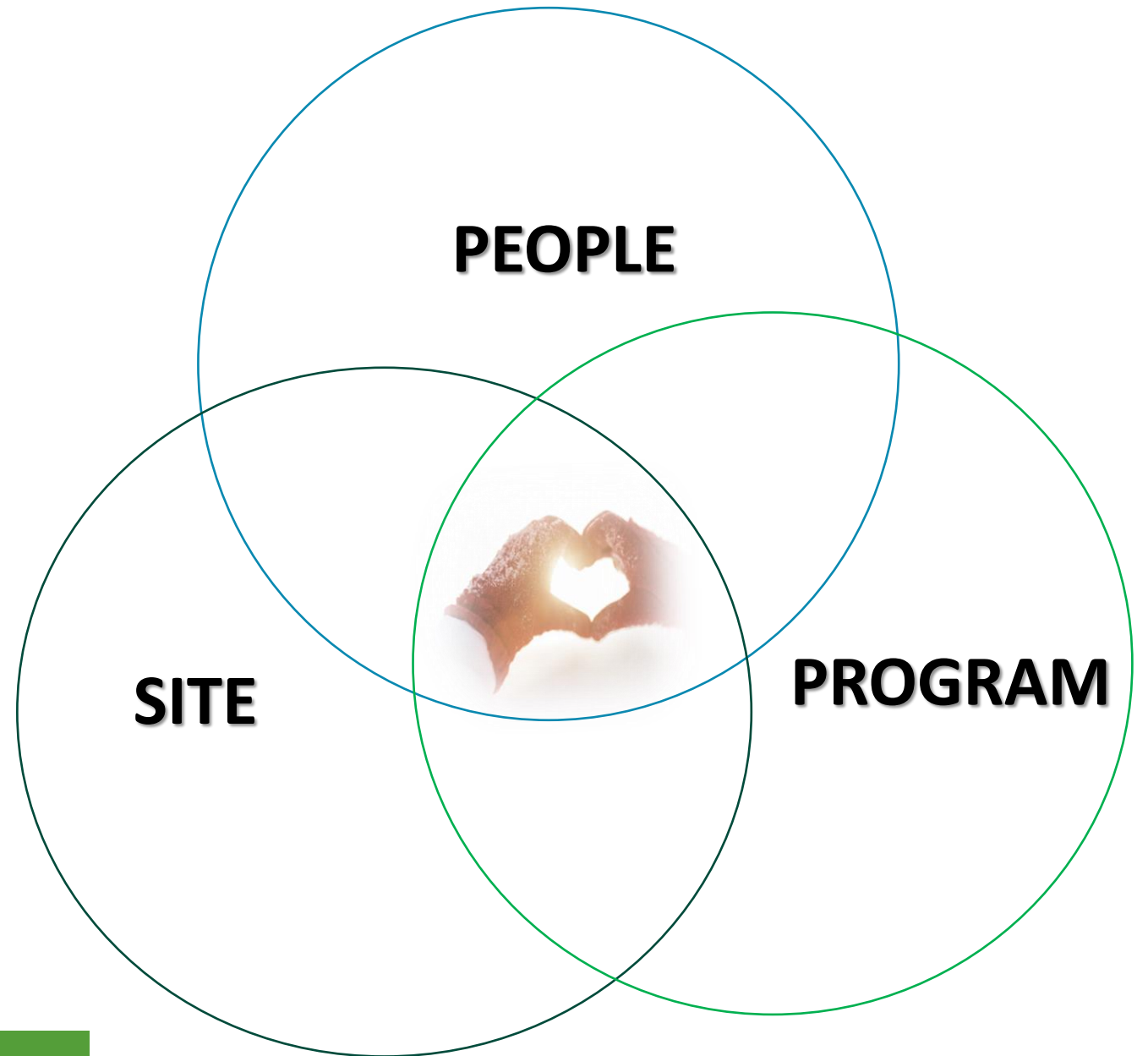
BROOKHAVEN CITY HALL

Schematic Design Massing and
Layout Document. 12/13/2022



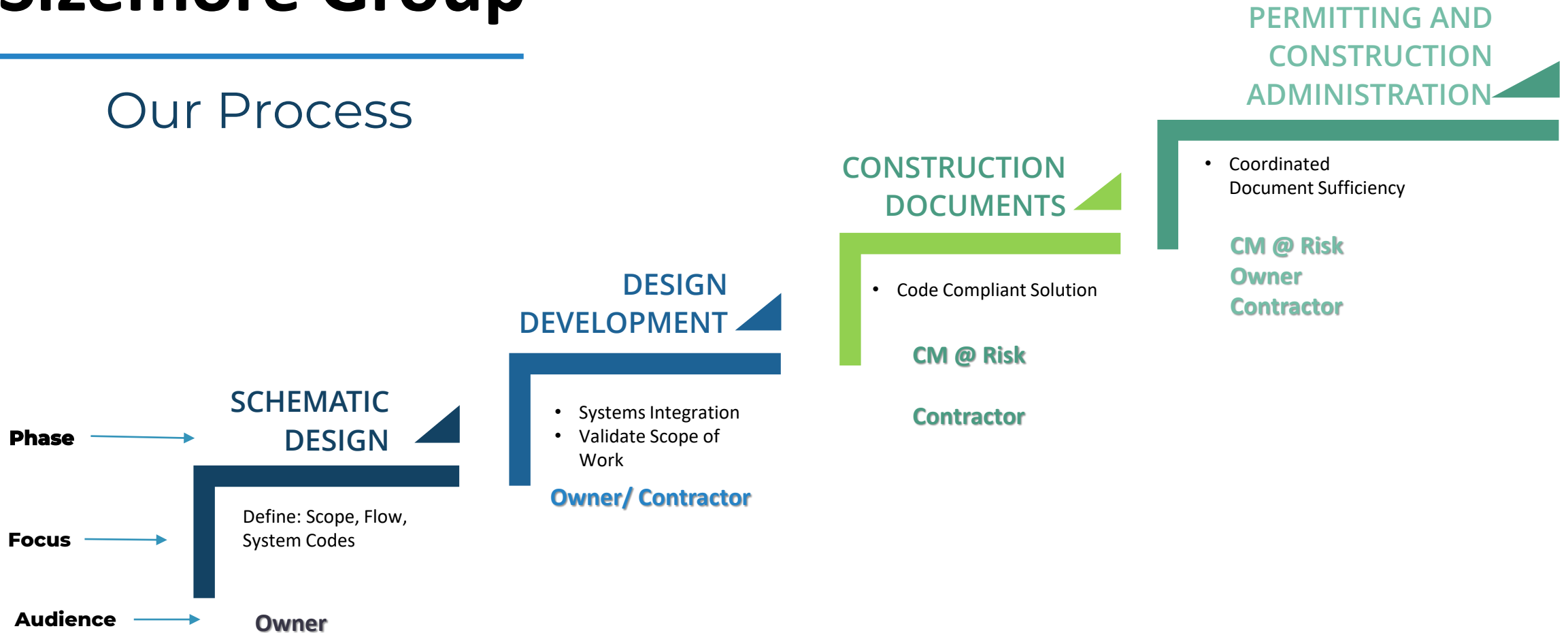
Landscape Sketch

WE are creating
the **HEART** of
Brookhaven



The Sizemore Group

Our Process



WHERE WE WERE



STAKEHOLDER INTERVIEWS



**SCHEMATIC DESIGN
CHARETTE**



**REVIEW OF OUTCOMES, THE
OPPORTUNITIES , AND
CHALLENGES**

Key Outcomes

from

STAKEHOLDER'S

Interviews

Key outcomes at Schematic Level

- A design reflecting Brookhaven
- Need for Green Space (WELL)
- Access to Daylight (sustainable)
- Everyone feels welcome

The Schematic Challenges

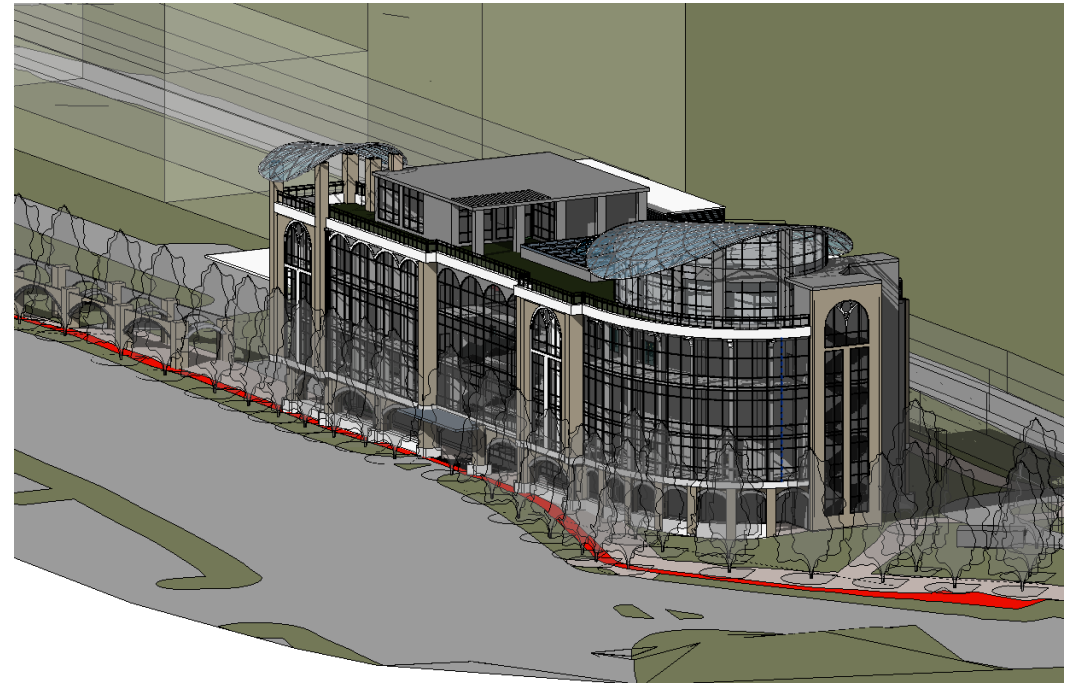
SD CHARETTE



THE Hybrid Scheme

Inspiration

This scheme takes the best elements from the previous designs. It includes the courtyard from the Charrette scheme. It includes the parking, drop off and private parking from the Grand Hall Low rise scheme and the iconic glass feature from the Rotunda Scheme. It is based on feedback from the Leadership team and internal review to arrive at the best use of the site with the programmatic requirement and stated goal.



Advantages

1. Ample drop off on ground level at with private executive parking.
2. Good daylight into the offices and the multipurpose.
3. Long Span creating separation from office
4. Car Free Town
5. Lobby areas has a terraced stair that doubles as a gathering place.
6. Large “courtyard” lobby within the building with tree and water feature.
7. Executive conference at rooftop and garden



BRANDED GATEWAY SCULPTURE



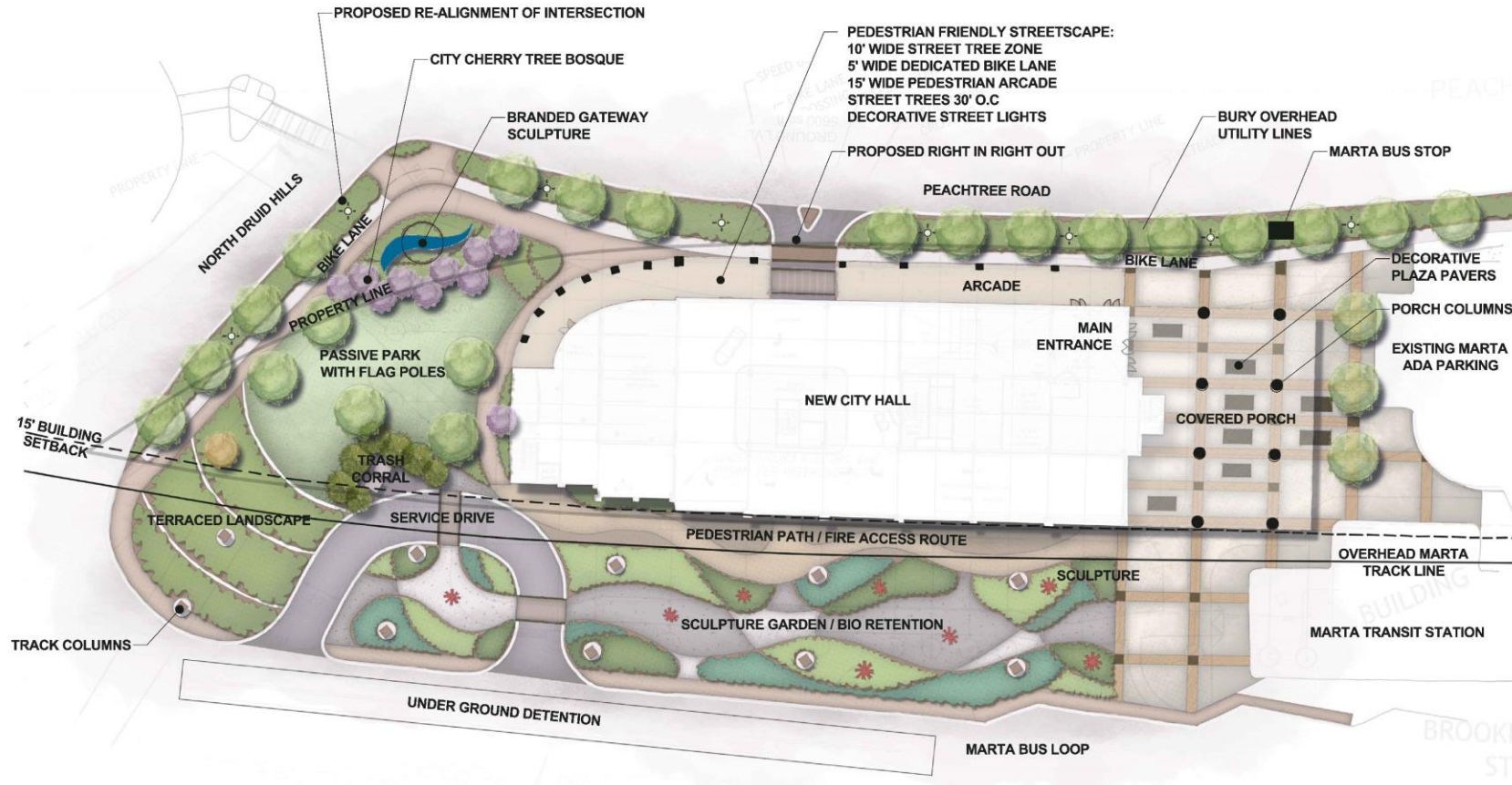
STREETSCAPE: (DECORATIVE MATERIALS, DELINEATED BIKE LANE, SHADE TREES, WIDE LANDSCAPE STRIPS)



PLAZA PAVING: DECORATIVE MATERIALS ON BUILDING GRID PATTERNS, SCULPTURE SEATING, SHADE TREES

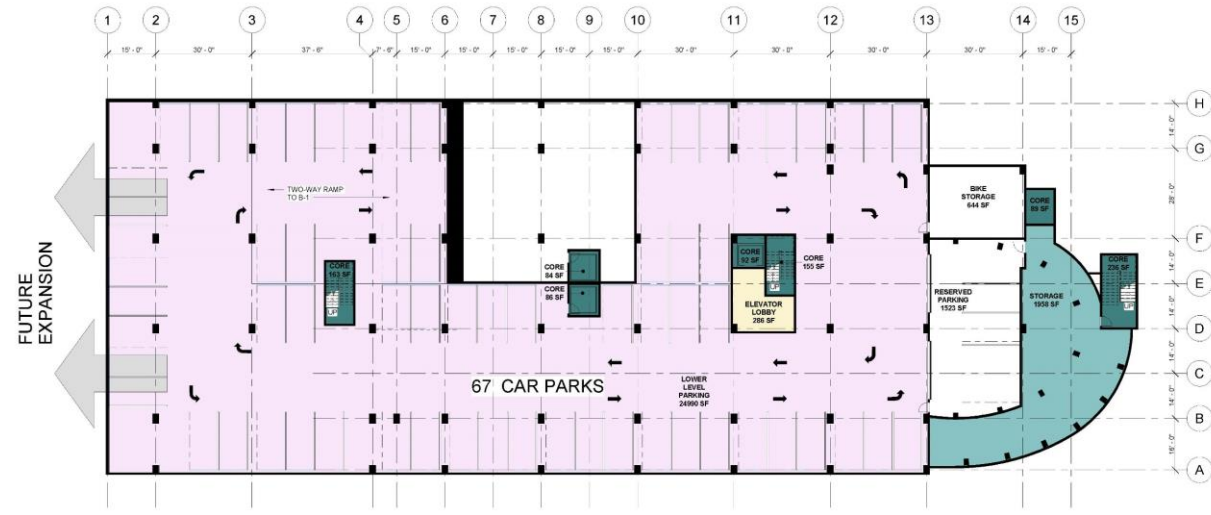
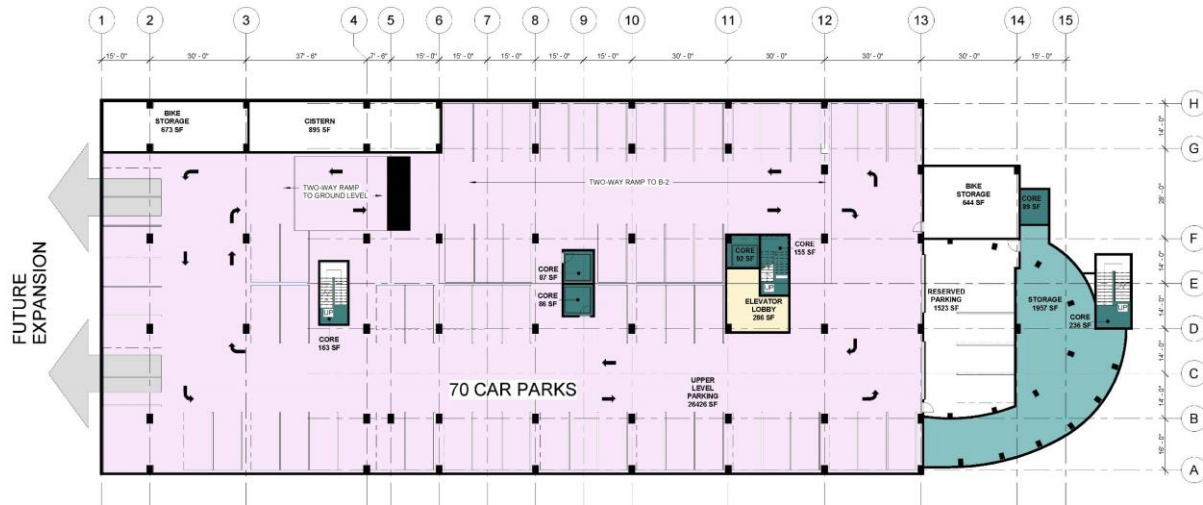


UNDERLINE IN MIAMI CASE STUDY EXAMPLE

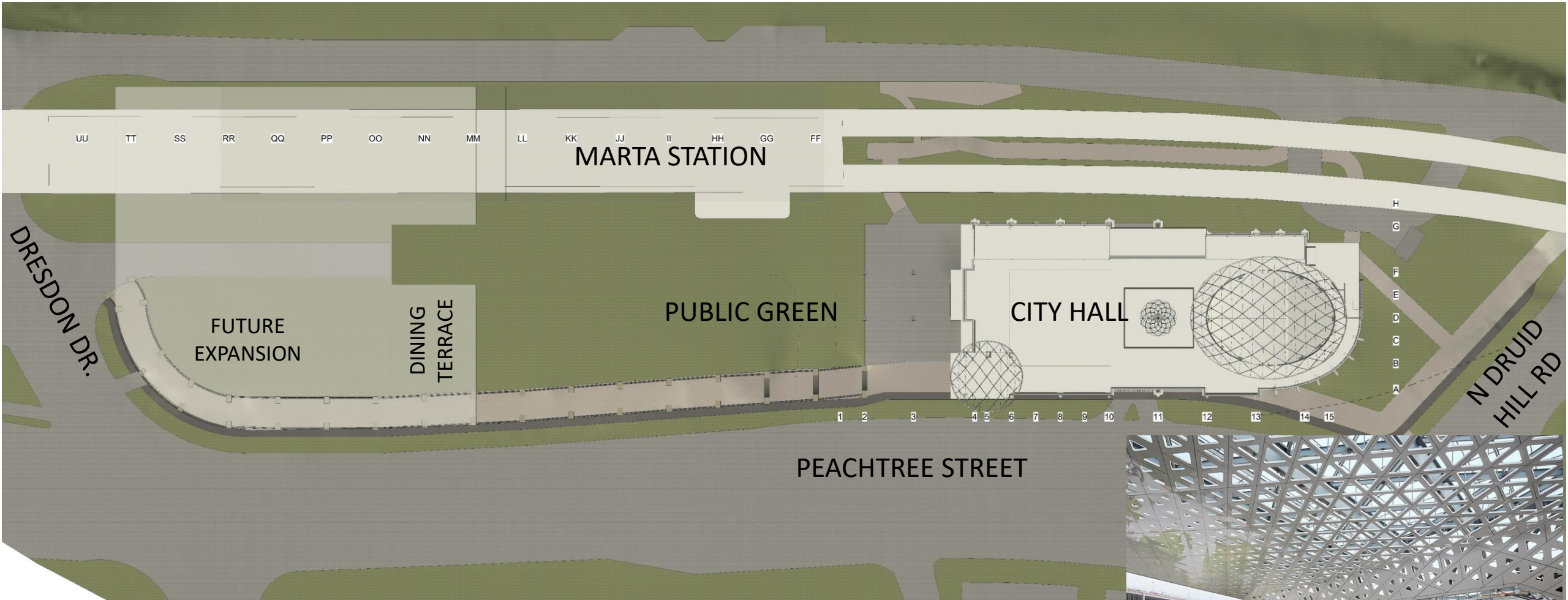


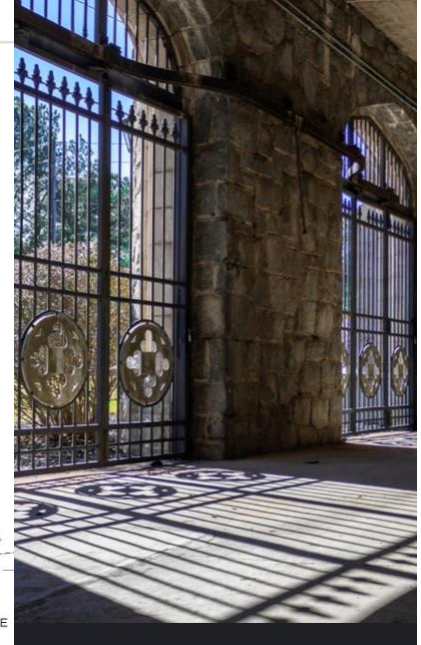
SCULPTURE GARDEN UNDER TRANSIT TRACKS

Parking Level



Site Plan



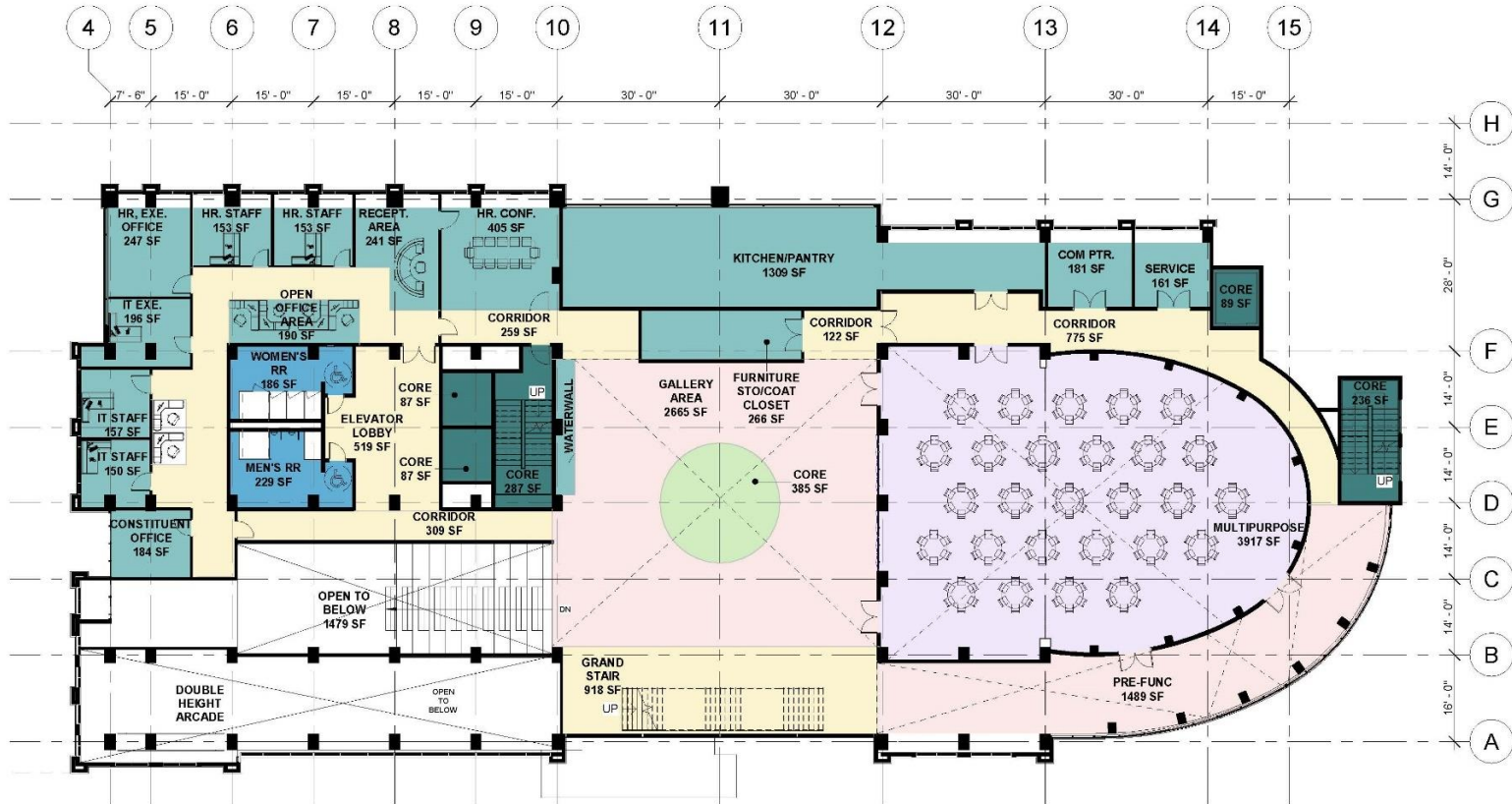


Ground Level

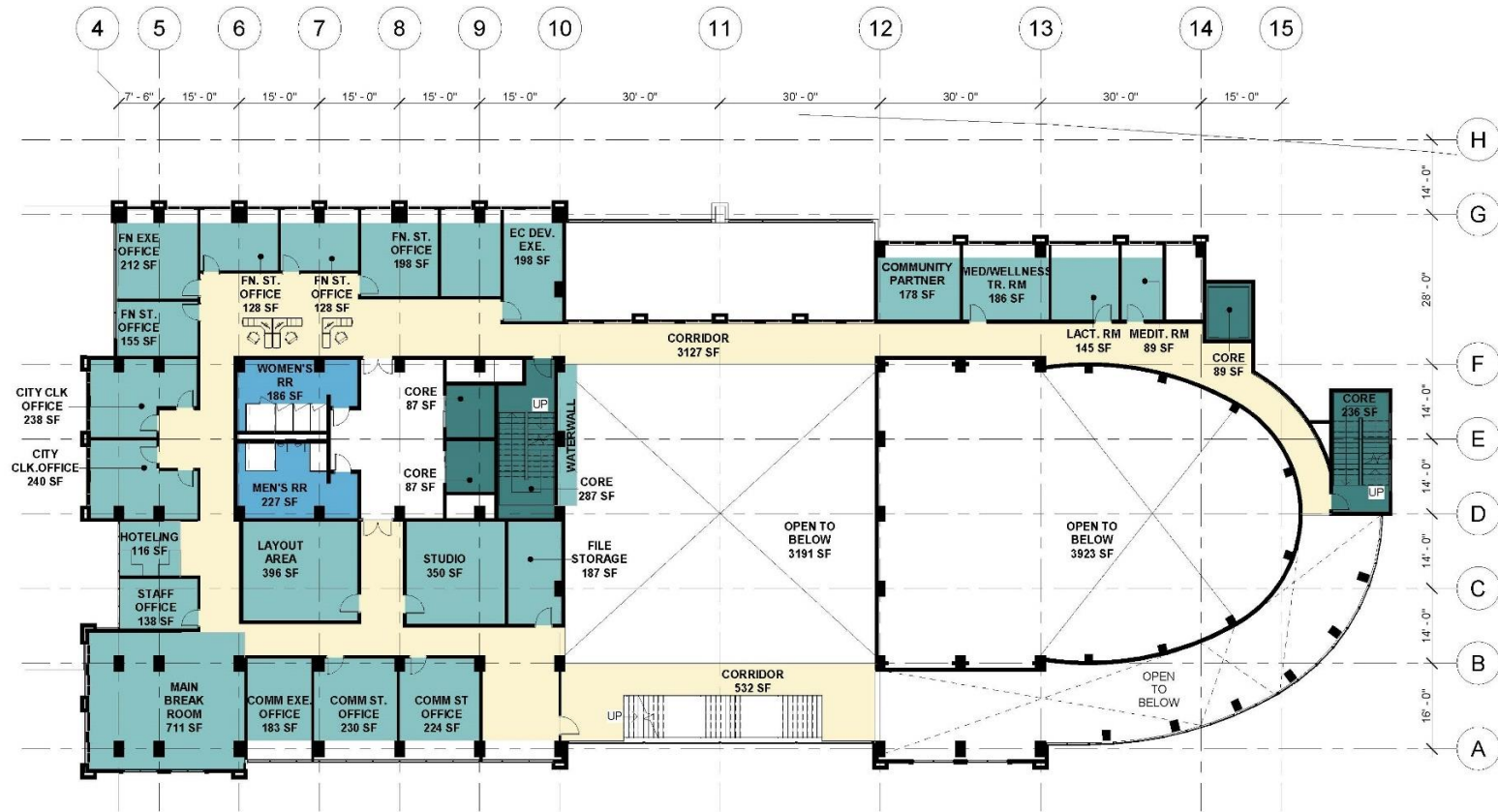




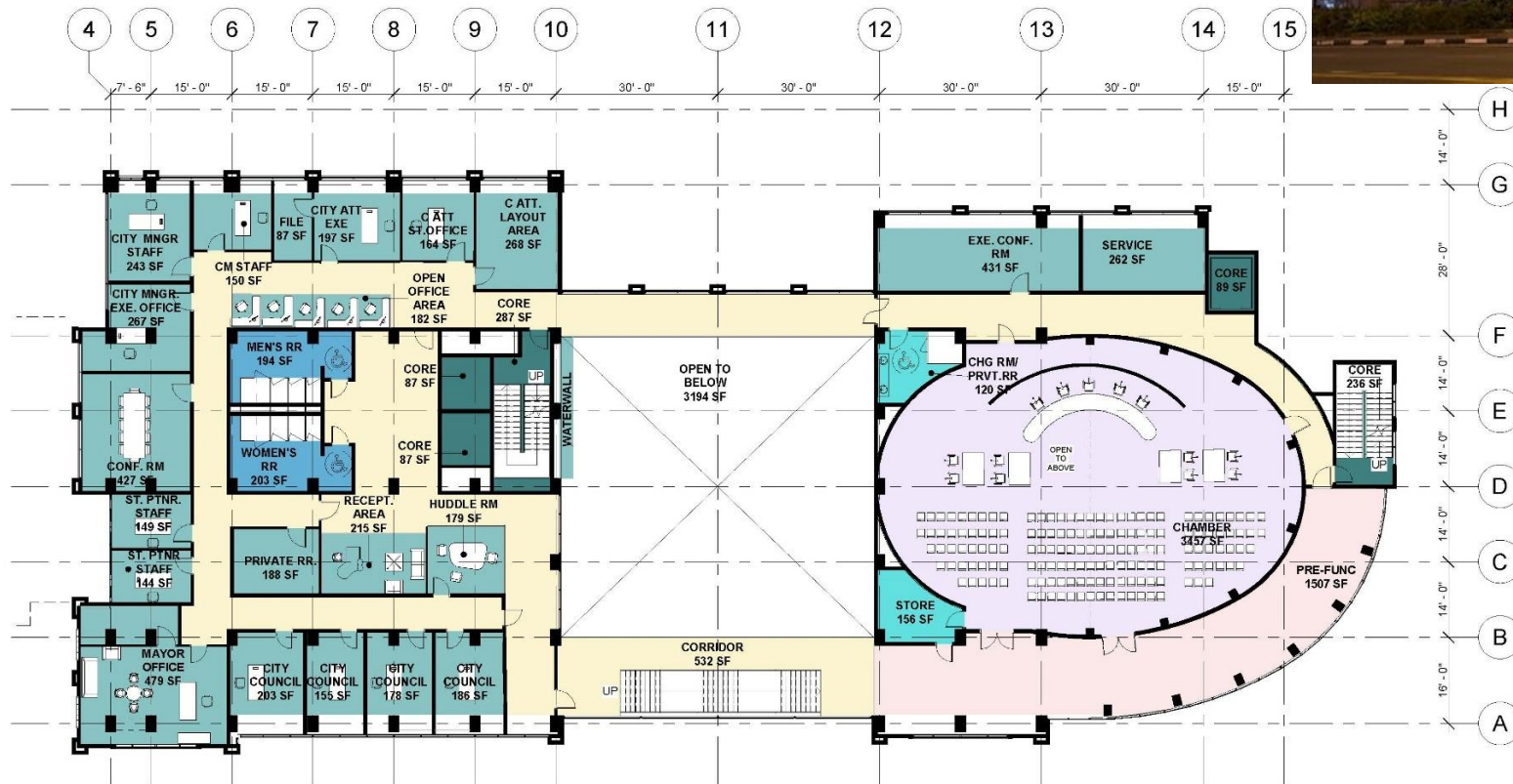
First Level



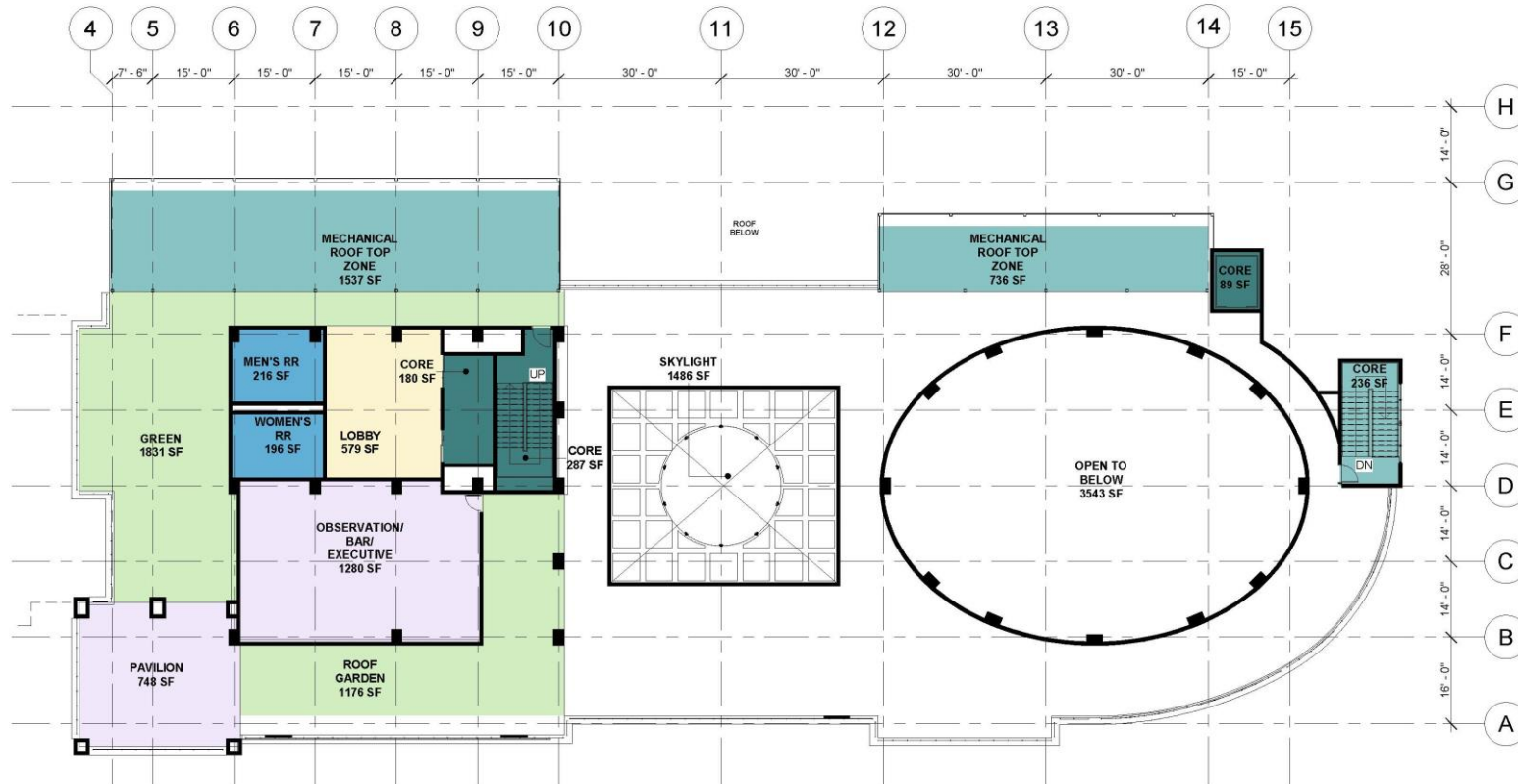
Second Level

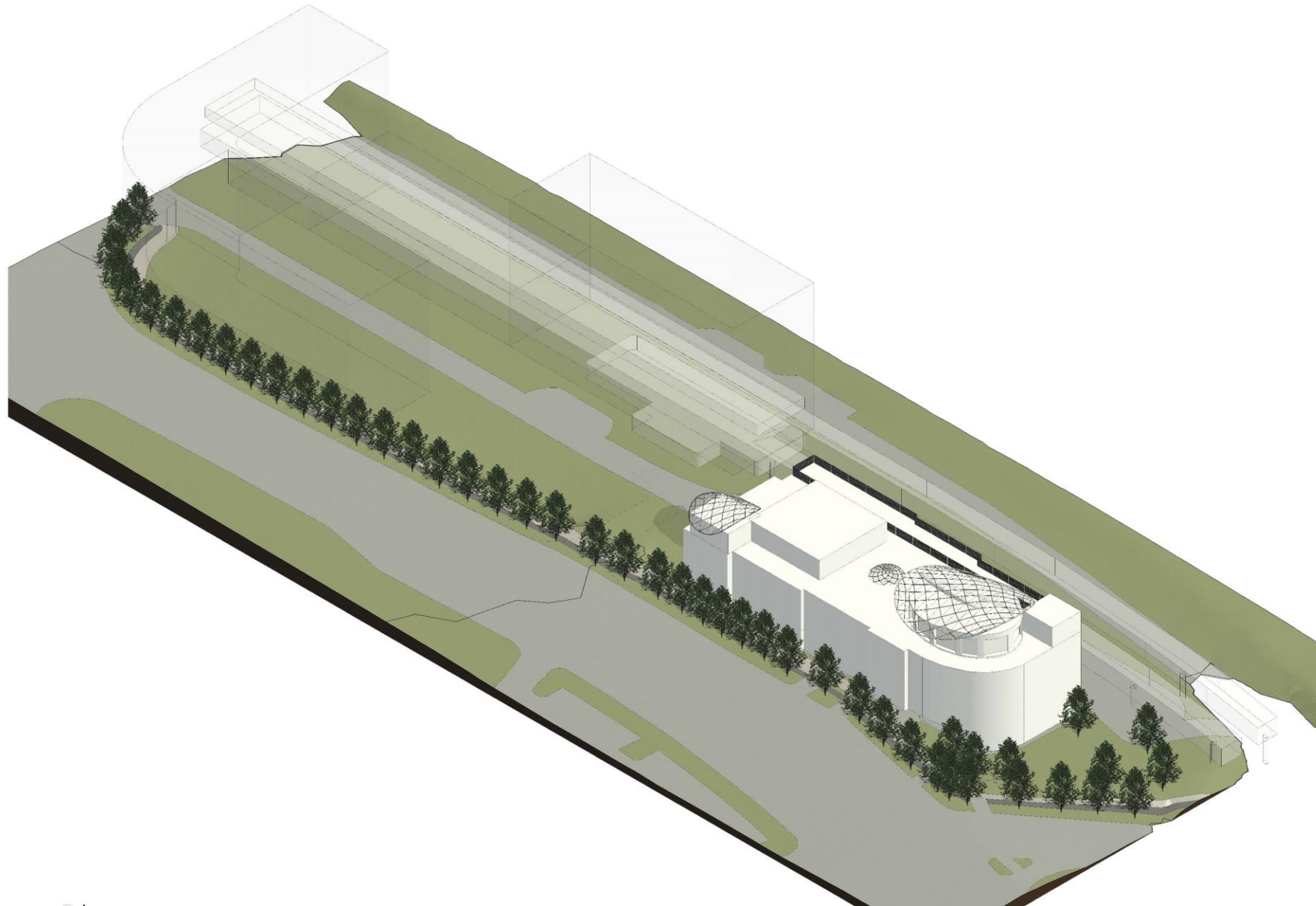


Third Level



Roof Level





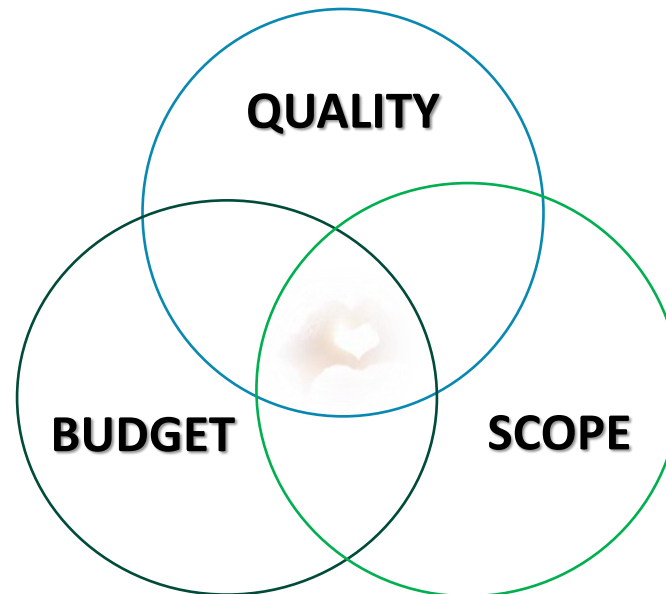
TOGETHER, WE ARE

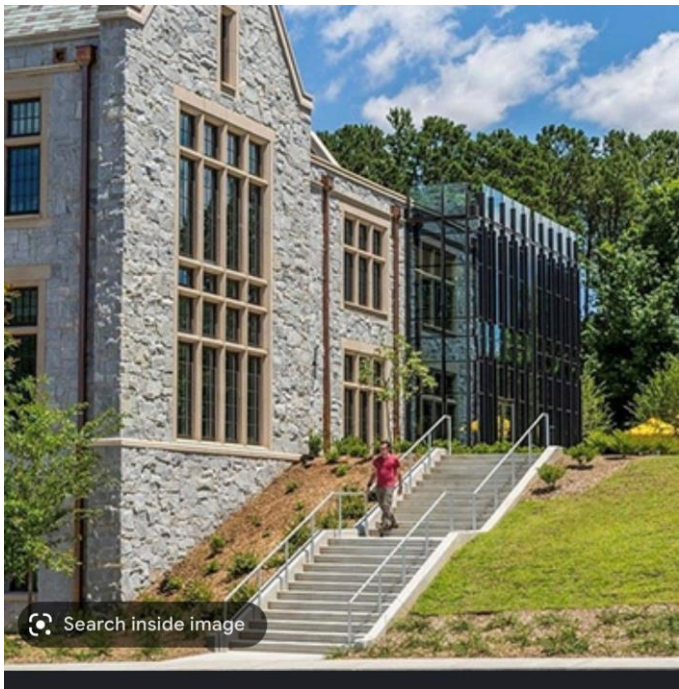
GOING

**THE DOCUMENTS REPRESENT THE BEGINNING OF
CHARACTER DEVELOPMENT
SG WILL CONTINUE TO DEVELOP THE DESIGN BASED
ON COMMUNITY AND LEADERSHIP INPUT**

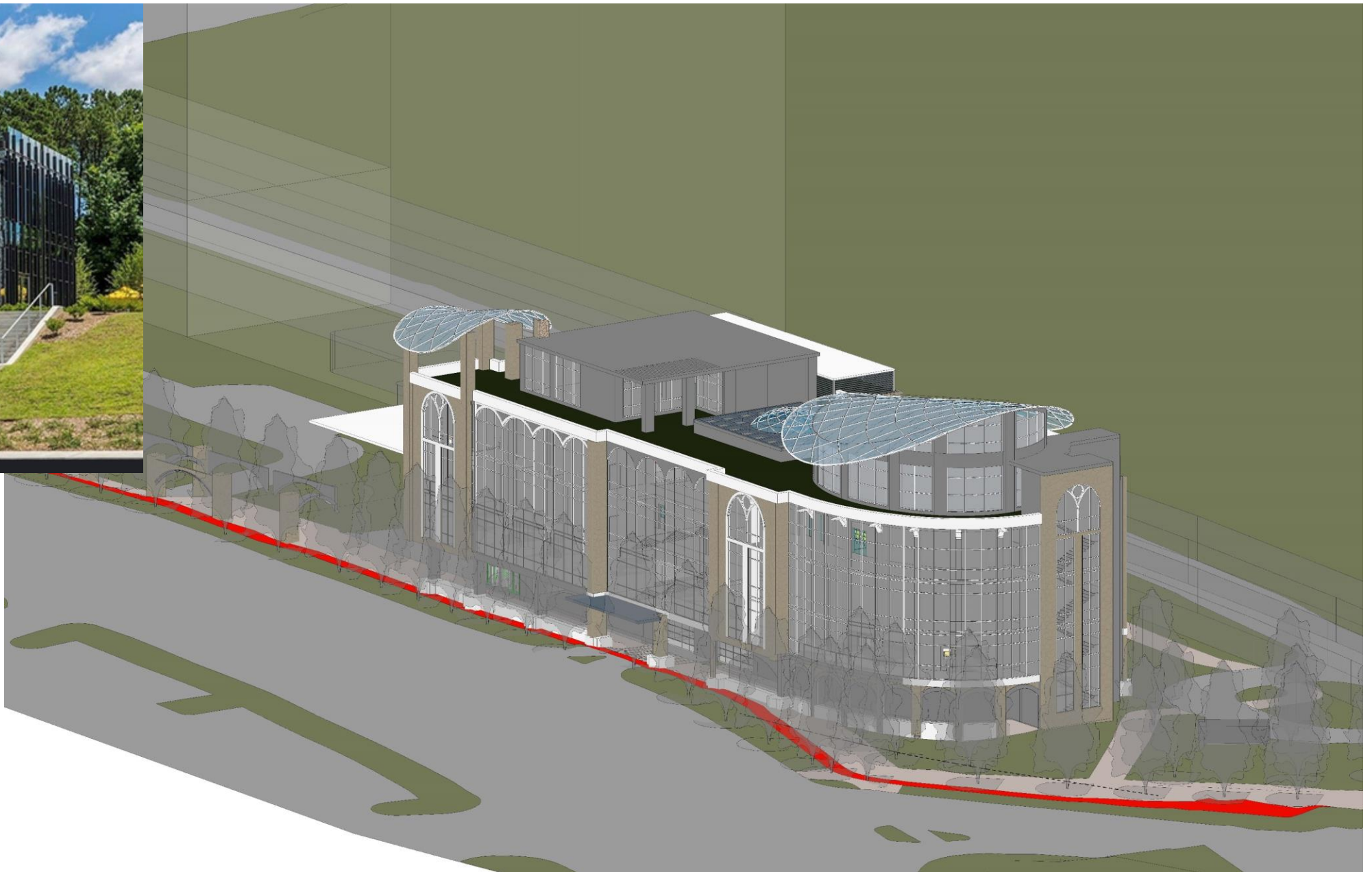
NEXT STEPS

- Pricing set to SG- CMR December
- Pricing by CMR 2-3 weeks December early January
- Review Pricing and Balancing (Scope : Quality : Budget) in January
- All Present final Schematic design to council January 2023





Search inside image



WE

THANK

YOU

Contact us:

Steve Mauro

smauro@cps-atlanta.com

Bill de St. Aubin, AIA - Principal-in Charge

Phone:678.523.1728

Email: Bill@sizemoregroup.com

Kathryn L Scott, AIA, LEED GREEN – Project Manager

Phone:828.273.1127

Email: kathryns@sizemoregroup.com@gmail.com