
Brookhaven Parks Bond Program

Oversight Committee Program Update

November 7, 2022



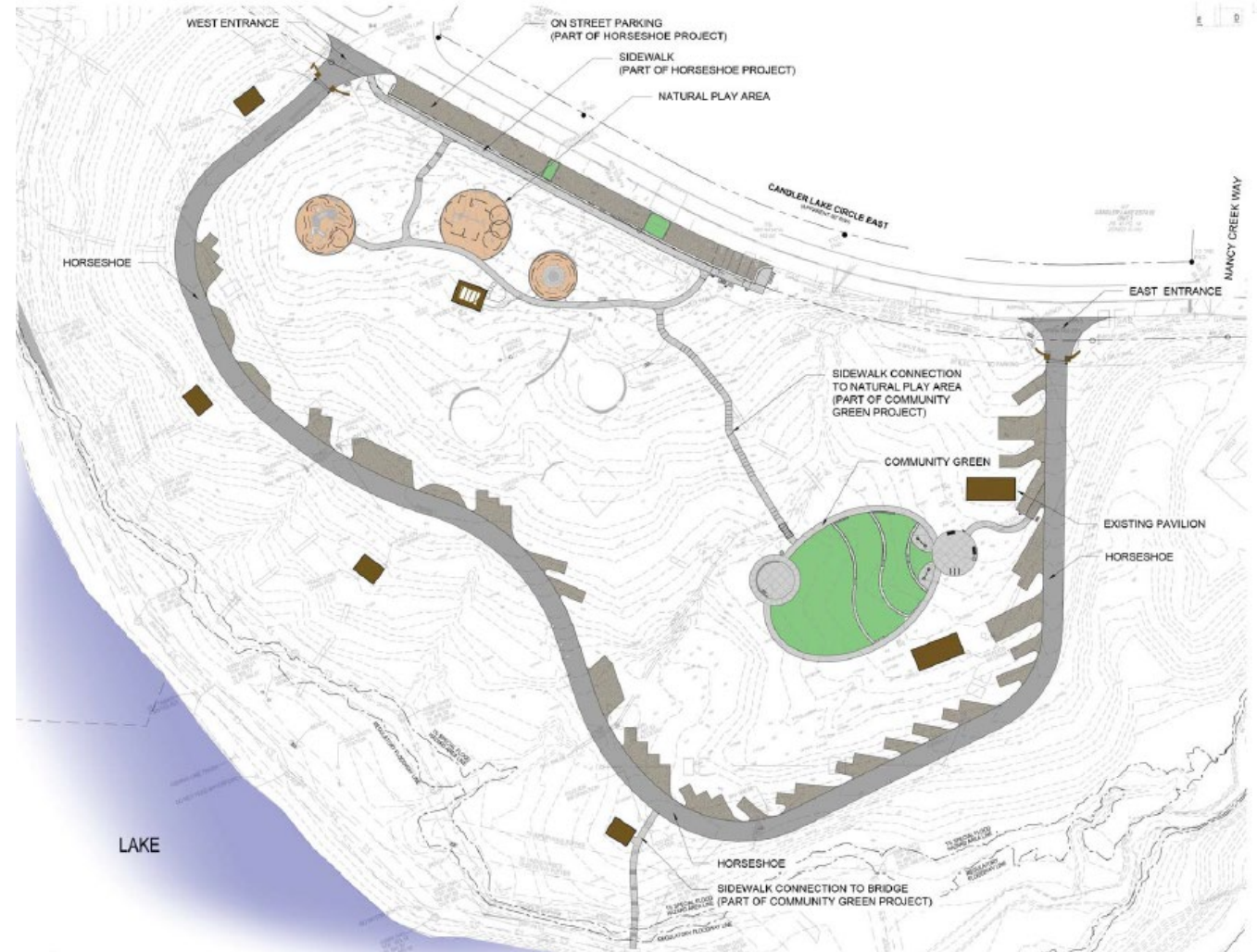
Jacobs

1. [Expenditure reports posted](#) monthly on the [Parks Bond website](#) in support of [City of Brookhaven Transparency](#)

2. PROJECT UPDATES

A. Murphey Candler Park

1. Community Green
 - a) \$391,678.88 contract with ICAN
 - b) Opened on September 2, 2022
2. Horseshoe Road
 - a) \$674,865.46 contract with ICAN
 - b) Opened on July 21, 2022
3. MCP North Boardwalk
 - a) \$860,000.00 design/build contract with Excellere
 - b) Opened on September 14, 2022



Murphey Candler Park Community Green



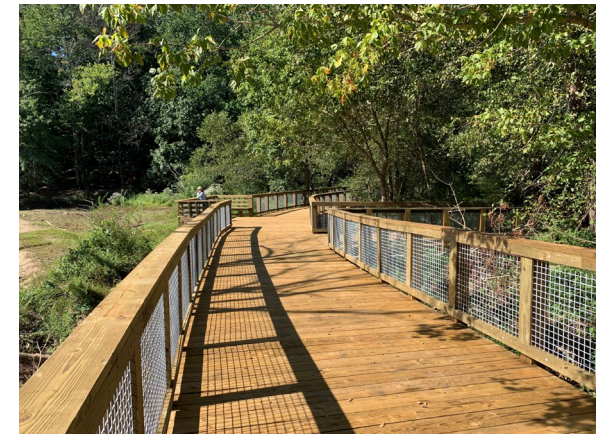
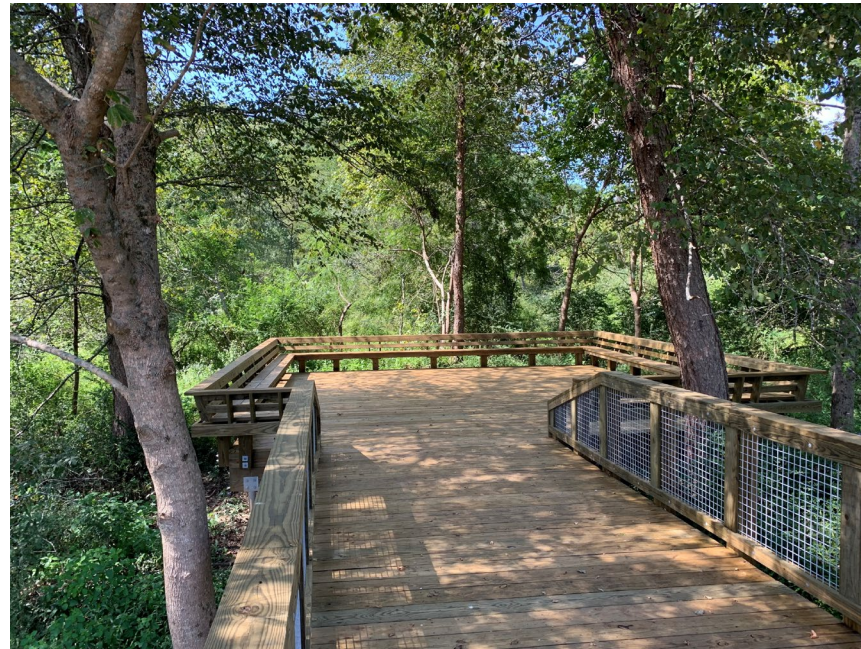


Horseshoe Road

- 16' wide, one-way
- gravel parking spaces
- Candler Lake W sidewalk along gravel parking



North Boardwalk



4. Multiuse trail on dam

- a) Contract for \$1,085,160.00 with Woodwind Construction
- b) Expected completion in mid-December
- c) Replace 5' sidewalk with 11' trail
- d) 7- 6' wide x 30' long overlooks with wood deck and railing










GENERAL LAYOUT NOTES:

1. INSTALL JOINTS WHERE SHOWN, ALONG ON WALLS, BUILDINGS, RADI, ETC. EVENLY SPACED BETWEEN ELEMENTS AND VERTICAL. PROVIDE EXPANSION JOINTS BETWEEN CONCRETE PAVEMENT AND SHOWN. ELEMENTS (WALLS, CURBS, ETC.)
2. LAYOUT ALL CURVES SMOOTHLY WITH NO ABRUPT CHANGES AT TANGENT POINTS.
3. GENERAL CONTRACTOR RESPONSIBLE FOR INSTALLATION OF ALL SLEEVES.
4. ALL ANGLES ARE 90 DEGREES UNLESS OTHERWISE NOTED.
5. LAYOUT ALL ELEMENTS IN FIELD AND CONTACT OWNER'S REPRESENTATIVE FOR APPROVAL BEFORE BEGINNING ANY CONSTRUCTION.
6. CONTRACTOR TO TAKE ALL PRECAUTIONS TO FIND AND AVOID SITE UTILITIES. ALL UTILITIES ARE NOT SHOWN ON DRAWING. VERIFY LOCATIONS AND CONSIDER WHEN ESTIMATING.
7. ALL PAVEMENT MARKING AND TRAFFIC CONTROL DEVICES SHALL BE INSTALLED PER THE MANUAL ON UNIFORM TRAFFIC CONTROL DEVICES (MUTCD), LATEST EDITION.
8. ALL GRADE ELEVATIONS AND HORIZONTAL CONTROL TO BE SET FROM PROJECT BENCHMARK NOTED ON PLANS.

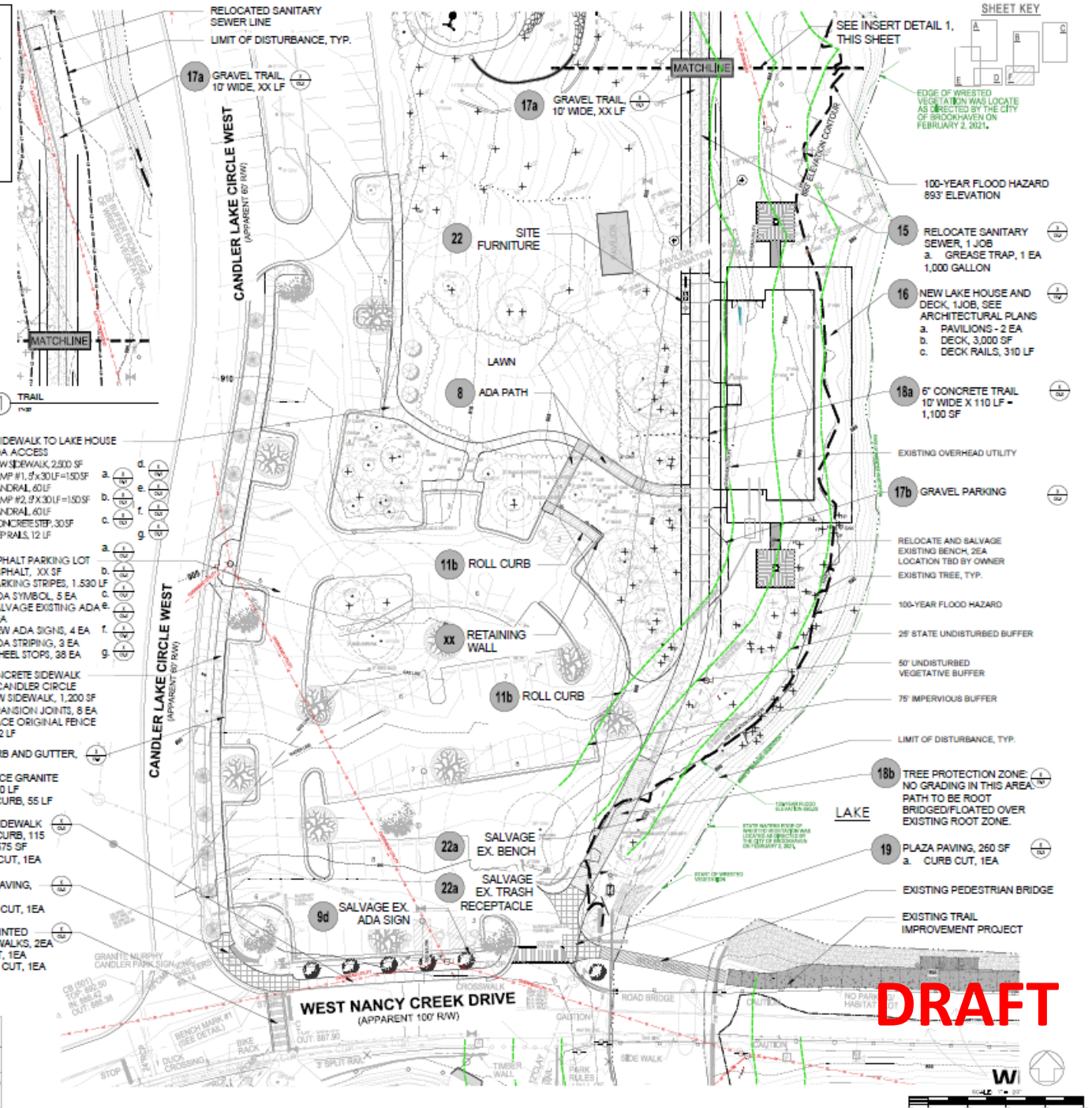
TREE NOTES:

1. ALL SPECIMEN TREES WILL BE PROTECTED.
2. NO ENCRoACHMENT INSIDE CRITICAL ROOT PLATE (CRP).
3. ENCRoACHMENT INSIDE CRITICAL ROOT ZONE (CRZ) IS MAX. 20%.
4. SPECIAL DETAIL WILL BE UTILIZED FOR SIDEWALK PAVEMENT OVER TREE ROOTS.

25-FOOT STATE BUFFER NOTES:
THE CONTRACTOR WILL NEED TO STAY OUT OF THE 25 FOOT BUFFER AND DO ALL WORK BY HAND INCLUDING CARRYING MATERIAL INTO THE 25' BUFFER.

- 1 STAKING - 1 JOB, SEE C4 SHEET SERIES AND SPECS
a. MOBILIZATION, 1 JOB
b. PICK UP PERMITS FROM CITY HALL, 1 JOB
- 2 DEMOLITION, 1 JOB
SEE DEMOLITION PLANS, C3 SERIES
- 3 CLEARING AND GRUBBING, 1 JOB
SEE DEMOLITION AND TREE PROTECTION
PLANS, C3 SERIES
a. TREE PROTECTION FENCE, XX LF
b. TREE CARE, 1 JOB, SEE SPECS
c. TREE REMOVAL, XX TREES
d. SMALL UNDERBRUSH VEGETATION, 1 JOB
- 4 EROSION CONTROL, 1 JOB
SEE EROSION CONTROL PLANS, C7 SERIES
- 5 GRADING, 1 JOB
SEE GRADING PLANS, C5 SERIES
a. TREE PROTECTION GRAVEL, XX SF
- 6 DRAINAGE, 1 JOB
SEE DRAINAGE PLAN, C5 SERIES
- 7 SITE UTILITIES, 1 JOB
SEE UTILITY PLAN, C5 SERIES FOR QUANTITIES
a. ELECTRIC SERVICE LINE, 1 JOB
b. WATER LINE, 1 JOB
c. SEWER LINE - RELOCATION, 1 JOB
d. GAS LINE, 1 JOB
e. CABLE LINE, 1 JOB
- 21 SITE LIGHTING, SEE SHEET 
a. SEE FIXTURE SCHEDULE
- 22 SITE FURNITURE
a. SALVAGE EXISTING
BENCH AND TRASH
RECEPTACLE, SEE
DEMO PLAN 
b. NEW BENCH, 1EA 
c. NEW TRASH
RECEPTACLE, 1 EA 
d. BIKE RACK, 1EA 
e. PAVEMENT, XX SF 
- 23 SITE SIGNAGE, 1 JOB 
- 24 LANDSCAPING AND IRRIGATION, 1 JOB
a. PLANTING PLAN, PLANT SCHEDULE,
AND DETAIL SEE C9 SERIES
b. GATOR BAGS ON TREES, XX EA
- 25 FINAL CLEAN UP & GRADING, 1 JOB
SEE SPECIFICATIONS
- 26 TRAFFIC CONTROL FOR PROJECT, 1 JOB
SEE SPECS

GEORGIA811
 Utilities Protection Center, Inc.
 1-800-282-7411
 Know what's below.
 Call before you dig.





ARCHITECTURE
ENGINEERING
PLANNING
O'Leary.com

800-875-5555 • 404-555-5555 • 404-555-5555



CITY OF BROOKHAVEN, GEORGIA
1915

DRAWINGS SCHEDULE	
No.	Description
1	COVER SHEET
2	GENERAL NOTES
3	PROPOSED LAYOUT
4	PROPOSED LAYOUT
5	PROPOSED LAYOUT
6	PROPOSED LAYOUT
7	PROPOSED LAYOUT
8	PROPOSED LAYOUT
9	PROPOSED LAYOUT
10	PROPOSED LAYOUT
11	PROPOSED LAYOUT
12	PROPOSED LAYOUT
13	PROPOSED LAYOUT
14	PROPOSED LAYOUT
15	PROPOSED LAYOUT
16	PROPOSED LAYOUT
17	PROPOSED LAYOUT
18	PROPOSED LAYOUT
19	PROPOSED LAYOUT
20	PROPOSED LAYOUT
21	PROPOSED LAYOUT
22	PROPOSED LAYOUT
23	PROPOSED LAYOUT
24	PROPOSED LAYOUT
25	PROPOSED LAYOUT
26	PROPOSED LAYOUT
27	PROPOSED LAYOUT
28	PROPOSED LAYOUT
29	PROPOSED LAYOUT
30	PROPOSED LAYOUT
31	PROPOSED LAYOUT
32	PROPOSED LAYOUT
33	PROPOSED LAYOUT
34	PROPOSED LAYOUT
35	PROPOSED LAYOUT
36	PROPOSED LAYOUT
37	PROPOSED LAYOUT
38	PROPOSED LAYOUT
39	PROPOSED LAYOUT
40	PROPOSED LAYOUT
41	PROPOSED LAYOUT
42	PROPOSED LAYOUT
43	PROPOSED LAYOUT
44	PROPOSED LAYOUT
45	PROPOSED LAYOUT
46	PROPOSED LAYOUT
47	PROPOSED LAYOUT
48	PROPOSED LAYOUT
49	PROPOSED LAYOUT
50	PROPOSED LAYOUT
51	PROPOSED LAYOUT
52	PROPOSED LAYOUT
53	PROPOSED LAYOUT
54	PROPOSED LAYOUT
55	PROPOSED LAYOUT
56	PROPOSED LAYOUT
57	PROPOSED LAYOUT
58	PROPOSED LAYOUT
59	PROPOSED LAYOUT
60	PROPOSED LAYOUT
61	PROPOSED LAYOUT
62	PROPOSED LAYOUT
63	PROPOSED LAYOUT
64	PROPOSED LAYOUT
65	PROPOSED LAYOUT
66	PROPOSED LAYOUT
67	PROPOSED LAYOUT
68	PROPOSED LAYOUT
69	PROPOSED LAYOUT
70	PROPOSED LAYOUT
71	PROPOSED LAYOUT
72	PROPOSED LAYOUT
73	PROPOSED LAYOUT
74	PROPOSED LAYOUT
75	PROPOSED LAYOUT
76	PROPOSED LAYOUT
77	PROPOSED LAYOUT
78	PROPOSED LAYOUT
79	PROPOSED LAYOUT
80	PROPOSED LAYOUT
81	PROPOSED LAYOUT
82	PROPOSED LAYOUT
83	PROPOSED LAYOUT
84	PROPOSED LAYOUT
85	PROPOSED LAYOUT
86	PROPOSED LAYOUT
87	PROPOSED LAYOUT
88	PROPOSED LAYOUT
89	PROPOSED LAYOUT
90	PROPOSED LAYOUT
91	PROPOSED LAYOUT
92	PROPOSED LAYOUT
93	PROPOSED LAYOUT
94	PROPOSED LAYOUT
95	PROPOSED LAYOUT
96	PROPOSED LAYOUT
97	PROPOSED LAYOUT
98	PROPOSED LAYOUT
99	PROPOSED LAYOUT
100	PROPOSED LAYOUT



CITY OF BROOKHAVEN, GEORGIA
1915



CITY OF BROOKHAVEN, GEORGIA
1915

CITY OF BROOKHAVEN

MURPHEY CANDLER PARK

1551 W. NANCY CREEK DRIVE NE

BROOKHAVEN, GEORGIA 30319

DATE	REVISION	BY	CHKD BY
03/05/21	01	GS	MC

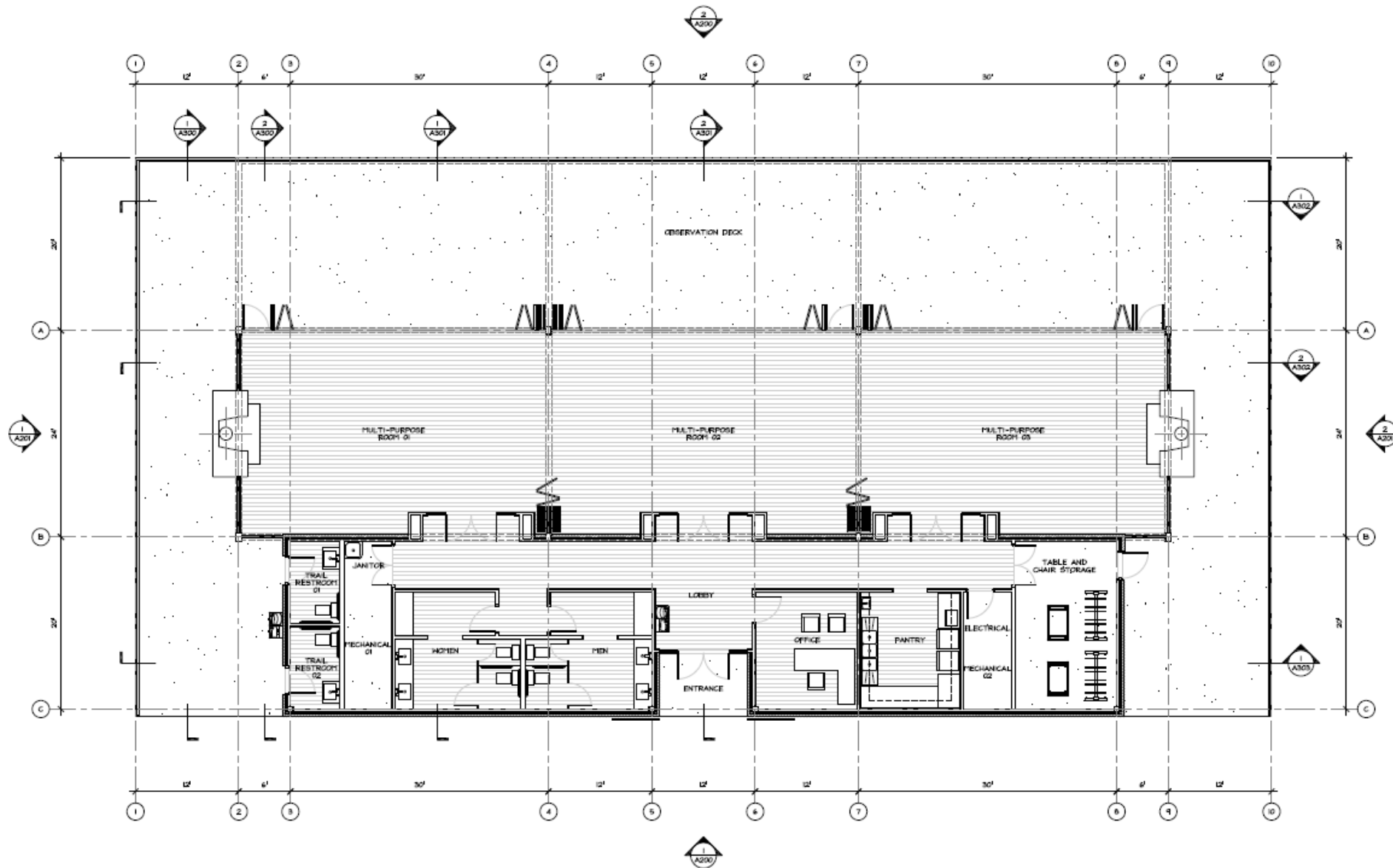
LAKE HOUSE
CONSTRUCTION
ITEMS AND SITE
LAYOUT

SCALE

1"=50'-0"

C4.8A

DATE: 03/05/21



1 FLOOR PLAN
SCALE: 3/16" = 1'-0"

DRAFT

REVISIONS	
NUMBER	DATE

CPI PROJECT NUMBER 15092.00		
DATE	DRAWN	CHECKED
05/05/2022	MSB	ESG
SHEET TITLE		

FLOOR PLAN

SHEET NUMBER
A100

B. Briarwood Park – Phase 2

1. Design and permitting to be complete so the project can be advertised for bid in January 2023. Construction phased in 2023 to minimize impact on park, pool, and recreation center.
2. Project to include:
 - a) Underground detention in Rec Center parking lot
 - b) Improved parking lot at rec center with additional spaces
 - c) Bio-swale along rec center parking lot
 - d) Park entrance modification with added parking
 - e) New community garden and pavilion
 - f) Tennis pavilion, seating area, and additional parking
 - g) Underground utilities
 - h) Trails and boardwalks
 - i) Removal of park entrance off Briarwood Way.

- 1 STAKING, 1 JOB
SEE SHEET CXX
- 2 CLEARING & DEMOLITION, 1 JOB
SEE SHEET XXXX
- 3 GRADING & DRAINAGE, 1 JOB
SEE CX SERIES SHEETS
- 4 EROSION CONTROL, 1 JOB
SEE CX SERIES SHEETS
- 5 BRIARWOOD PARK ENTRANCE
MODIFICATIONS
A. ASPHALT PAVING, 8300 SF, SEE
DETAIL X/CXXX
B. CONCRETE CURB & GUTTER, 285
LF, SEE DETAIL X/CXXX
C. STAKING, 1 JOB, SEE DETAIL
X/CXXX
- 6 TENNIS PAVILION WALKWAY
A. CONCRETE STAIRS, 50 SF, SEE
DETAIL X/CXXX
B. STAIR RAILING, 25 LF, SEE
DETAIL X/CXXX
C. CONCRETE WALKWAY, 315 LF,
SEE DETAIL X/CXXX
- 7 TENNIS SEATING AREA, SEE
DETAIL X/CXXX
A. CRUSHED GRAVEL, 675 SF, SEE
DETAIL X/CXXX
B. SEATING WALLS, 110 LF, SEE
DETAIL X/CXXX
- 8 TENNIS PARKING WALKWAY
A. CONCRETE STAIRS, 120 SF, SEE
DETAIL X/CXXX
B. STAIR RAILING, 34 LF, SEE
DETAIL X/CXXX
C. CONCRETE WALKWAY, 1000 SF,
SEE DETAIL X/CXXX
- 9 SHADE STRUCTURE (TENNIS
AREA)
A. FRAME STRUCTURE, 1 EA, SEE
SHEET XXXX
B. CONCRETE CURB, 30 LF, SEE
DETAIL X/CXXX
- 10 CONCRETE MULTI-USE TRAIL
(COMMUNITY GARDEN AREA),
SEE DETAIL X/CXXX
A. CONCRETE PAVING, 12040 SF,
SEE DETAIL X/CXXX
B. TIE PROTECTIVE MEASURES,
3000 SF, SEE DETAIL X/CXXX
C. 110' FOOTBRIDGE, 1 JOB, SEE
SHEET XXXX
D. 60' FOOTBRIDGE, 1 JOB, SEE
SHEET XXXX
E. CONCRETE STAIRS, 200 SF,
SEE DETAIL X/CXXX
F. STAIR RAILING, 36 LF, SEE
DETAIL X/CXXX
G. HEAVY DUTY CONCRETE
PAVING, 1800 SF, SEE DETAIL
X/CXXX
H. REMOVABLE BOLLARD, 3 EA,
SEE DETAIL X/CXXX
I. FIXED BOLLARD, 3 EA, SEE
DETAIL X/CXXX
J. BOARDWALK, 1610 LF, SEE
DETAIL X/CXXX
K. SEATING WALLS, 160 LF,
SEE DETAIL X/CXXX
- 11 SHADE STRUCTURE
(COMMUNITY GARDEN AREA),
SEE DETAIL X/CXXX
- 12 COMMUNITY GARDEN, SEE
DETAIL X/CXXX
A. 6' BLACK VINYL FENCE, 290
LF, SEE DETAIL X/CXXX
B. ELECTRIC FENCE, 1 EA, SEE
DETAIL X/CXXX
C. DOUBLE SLIDING GATE, 1 EA,
SEE DETAIL X/CXXX
D. CRUSHED GRAVEL PAVING,
2700 SF, SEE DETAIL X/CXXX
E. RAILING, 80 LF, SEE DETAIL X/CXXX
F. STAIRS, 350 SF, SEE
DETAIL X/CXXX
G. WOOD BARRIER FARMING, 3520
SF, SEE DETAIL X/CXXX
H. PUTTING HOLE STRUCTURE, 1
EA, SEE DETAIL XXXX
I. WATER STRUCTURE, 2 EA, SEE
DETAIL X/CXXX
J. IRRIGATION SYSTEM, 1 JOB

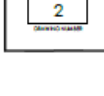
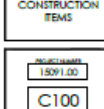
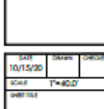
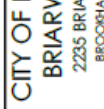
- 14 SITE UTILITIES
A. STAKE UTILITY, 1 JOB, SEE
SHEET XXXX
B. STAKE UTILITY, 1 JOB, SEE
SHEET XXXX
C. BURY OVERHEAD ELECTRICAL
UTILITIES, SEE SHEET XXXX
D. STREET LIGHTS ALONG
BRIARWOOD PARK ROAD, 1 JOB,
SEE SHEET XXXX
E. PAVING LOT LIGHTING, 1 JOB,
SEE SHEET XXXX
F. EXISTING LIGHT STATION, 1 JOB,
SEE SHEET XXXX
G. STREET LIGHTS ALONG
BRIARWOOD PARK ROAD, 1 JOB,
SEE SHEET XXXX
- 15 IRRIGATION, 1 JOB, SEE IR
SHEET SERIES
- 16 LANDSCAPING, 1 JOB, SEE
L SHEET SERIES
- 17 SITE FURNISHINGS
A. FOUNTAIN, 1 EA, SEE
DETAIL X/CXXX
B. BENCH, 3 EA, SEE DETAIL
X/CXXX
C. BENCH, 2 EA, SEE
DETAIL X/CXXX
D. BENCH, 8 EA, SEE
DETAIL X/CXXX
E. TABLE, 4 EA, SEE
DETAIL X/CXXX
F. TABLE, 4 EA, SEE
DETAIL X/CXXX
G. INSTALL SALVAGED BENCH
1 EA
- 18 SITE SIGNAGE
A. SIGNAGE, 1 EA, SEE DETAIL
X/CXXX
B. SIGNAGE, 1 EA, SEE DETAIL
X/CXXX
C. INSTALL SALVAGED PARK RULES
SIGN, 1 EA, SEE DETAIL X/CXXX
D. HANDICAP PARKING SIGN, 4 EA,
SEE DETAIL X/CXXX
E. VEHICLE SIGN, 3 EA
F. INSTALL SALVAGED DOG STATION,
1 EA
G. EXISTING SIGN, 2 EA
- 19 FINAL CLEAN UP & GRADING,
1 JOB



GEORGIA811
Call Before You Dig
1-800-262-7411
www.georgia811.com



NO.	DATE	DESCRIPTION



C. Brookhaven Park

1. The City acquired the remaining park property from the County on April 26, 2022.
2. Design is complete and the project is going through City and County permitting.
3. Plans are to bid the project so construction can start in early 2023.
4. Project will include:
 - a) New dog park parking lot
 - b) Modified stormwater pond/system
 - c) Improved trail for fire access
 - d) New dog park pavilion/restrooms/patio
 - e) Dog splashpad
 - f) New playground with restrooms and pavilion
 - g) Large group pavilion (bid alternate)
 - h) Stage area (bid alternate)
 - i) Pavilion at community garden (bid alternate)
5. Design of the Peachtree Road sidewalk and entry gate is proceeding for construction by other funding.

C1.01

C1.02

LOSE DESIGN
SPACES FOR LIFE.

NOT FOR
CONSTRUCTION

NOT FOR
CONSTRUCTION

BROOKHAVEN PARK IMPROVEMENTS SITE DEVELOPMENT PACKAGE

CITY OF BROOKHAVEN PARKS AND RECREATION DEPARTMENT
CITY OF BROOKHAVEN LAND LOTS 240 & 241, DISTRICT 18

80% CONSTRUCTION DOCUMENTS

NO. DATE DESCRIPTION

80% CONSTRUCTION DOCUMENTS

SHEET TITLE

LAYOUT PLAN SHEETS

KEY

PROJECT NO. 19002 DATE 10/20/2019

DRAWN BY SCALE 1" = 50'

CHECKED BY

DATE

PROJECT NO.





C1.00

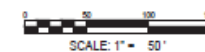
C1.03

LAYOUT NOTES:

1. SEE SHEET C0.01 FOR GENERAL NOTES.
2. SEE ARCHITECTURAL SHEETS FOR BUILDINGS.
3. INSTALL JOINTS WHERE SHOWN TO ALIGN TO WALLS, BUILDINGS, RACK, ETC. EVENLY SPACE BETWEEN ELEMENTS AS SHOWN. PROVIDE EXPANSION JOINTS BETWEEN CONCRETE PAVEMENT AND VERTICAL ELEMENTS (WALL, CURBS, ETC.). ALL JOINTS TO BE STRAIGHT AND TRUE.
4. LAYOUT ALL CURVES SMOOTHLY WITH NO ABRUPT CHANGES AT TANGENT POINTS.
5. ALL CURBS ARE DIMENSIONED TO THE FACE OF CURBS.
6. CONTRACTOR TO TAKE ALL PRECAUTIONS TO FIND AND AVOID SITE UTILITIES. ALL UTILITIES ARE NOT SHOWN ON DRAWING. VERIFY LOCATIONS AND CONSIDER SUCH WHEN ESTIMATING.
7. ALL PAVEMENT MARKING AND TRAFFIC CONTROL DEVICES SHALL BE INSTALLED PER THE MANUAL ON UNIFORM TRAFFIC CONTROL DEVICES (MUTCD), LATEST EDITION.
8. ALL PAVEMENT MARKINGS TO BE THERMOPLASTIC, UNLESS OTHERWISE NOTED.
9. ALL ANVOLS ARE 30" UNLESS OTHERWISE NOTED.
10. ALL RACKS ARE 5' UNLESS OTHERWISE NOTED.

FURNISHING LEGEND

SYMBOL	DESCRIPTION	COUNT
	LOUNGE CHAIR SEE DETAIL 304.02	0
	METAL BLEACHER SEE DETAIL 304.03	0
	TABLE WITH UMBRELLA (CANOPED) SEE DETAIL 304.02	0
	TABLE WITH UMBRELLA (ADA) SEE DETAIL 304.02	0





Brookhaven Park- proposed playground



D.. Lynwood Park Splashpad, pool, and synthetic turf field

- Integrated Construction and Nobility, Inc., with Aqua Design Systems, Inc. contract for \$8,610,351.58
- Advanced Sports Group, synthetic turf field, contract for \$564,782.29
- Scheduled completion in spring 2023 in time for the summer swim season



Lynwood Park Brookhaven

Brookhaven, GA

W22129-2AR1 | 795.5 GPM | 4,262 SQ FT | Perspective View | JH

CREATING COMPELLING
AQUATIC PLAY EXPERIENCES





November 3, 2022, Panorama of Lynwood Park splashpad project: poolhouse steel columns on left, excavated lap pool beyond poolhouse, splashpad is behind trees on left, circular dropoff is in middle, turf field will be where stockpiled soil is, perimeter fence is installed, and underground detention is complete.



Helical piles installed under pool



Excavated pool with plumbing install



Poolhouse ready for concrete slab



Synthetic turf field pavilion



Installation of underground detention system for stormwater runoff

The system is located under the synthetic turf field with access manholes outside the turf.



3. The next meeting will be scheduled in 2023 after bids for Brookhaven Park, Briarwood Park Phase 2, and the MCP Lake House are received.

The public can send questions and concerns about the Parks Bond and Parks & Rec Projects to ParksFeedback@BrookhavenGA.gov



Jacobs