

Peachtree Creek Greenway Phase 1



Open House – October 16, 2017



KAIZENCOLLABORATIVE
Landscape Architecture | Planning | GIS

PEREZ PLANNING + DESIGN, LLC

- Introductions
- Benefits of Trails
- Peachtree Creek Greenway - Overview
- Phase 1 Schedule and Design
- Amenities/Design Standards
- Next Steps

- PATH Foundation
Ed McBrayer, Exec. Director
- Perez Planning + Design
Carlos Perez
- KAIZEN Collaborative
Greta deMayo



- 501(c) 3 Non Profit
- Public-private partnerships with State, Counties, and Cities
- Private Sector Partner facilitates fundraising and fast tracking



- Built over 260 miles of greenway trails.
- Raised over \$80 Million from private sector for trail development.
- Caused \$130 Million to be allocated from public sector for trails.

PATH 400



City of Atlanta BeltLine



Photo by: Atlanta Magazine

PATH Parkway



Carrollton GreenBelt



Panola Mountain State Park Trail System



Spanish Moss Trail



Island-Wide Trail System



Planning Considerations



< 1%

7%

60% Interested but Concerned

33% No way No How

Need to be separated from the road

Strong & Fearless

Enthusied & Confident

Will ride in the road

Benefits of Trails

Trail Benefits



- Changing travel habits in Young Americans
- Desires for walkable / bikeable communities

Trail Benefits – Alternate Transportation



- Less dependency on cars and expanded roads
- Promotes social dignity for all citizens

Trail Benefits – Economic Development

Beltline has helped local business boom

By Kevin Rathbun

Opening a restaurant is never a sure thing. Every entrepreneur takes a risk on a new venture. Since opening our first of three restaurants in Inman Park 10 years ago, location has been key to our success. We have always believed in the vision of the Atlanta Beltline, and taking the risk to locate our restaurants alongside it has paid off.

What we've seen next to Kevin Rathbun Steak on Krog Street has been incredible. Even before the paved trail, people were using the Beltline to exercise, walk their dogs



Kevin Rathbun is an Atlanta chef and owner of four restaurants.

and down the Eastside Trail are opening their doors to the Beltline, investing in new connections and entrances to attract customers.

This trend will likely continue and accelerate as new

so a fantastic amenity for the public. It is making Atlanta healthier by promoting walkability and creating public space that enhances social interactions. People from every age and ethnicity use the Beltline, making real the vision we had for this project from the beginning.

When we opened Kevin Rathbun Steak seven years ago in Inman Park, we never could have predicted the transformation of the abandoned rail corridor next door. We knew something good would happen. But the thousands of people who walk and cycle past the restaurant on a daily basis

— Atlanta Journal—Constitution Article February 7, 2014



- Retain local talent
- Attract new businesses and industry
- Development of tourism based businesses

Trail Benefits – Health and Wellness



- Enhance physical and mental health

Trail Benefits – Quality of Life Improvements



- Social interaction; neighborhood cohesiveness
- Nearby recreational amenity
- Enhance neighborhood security

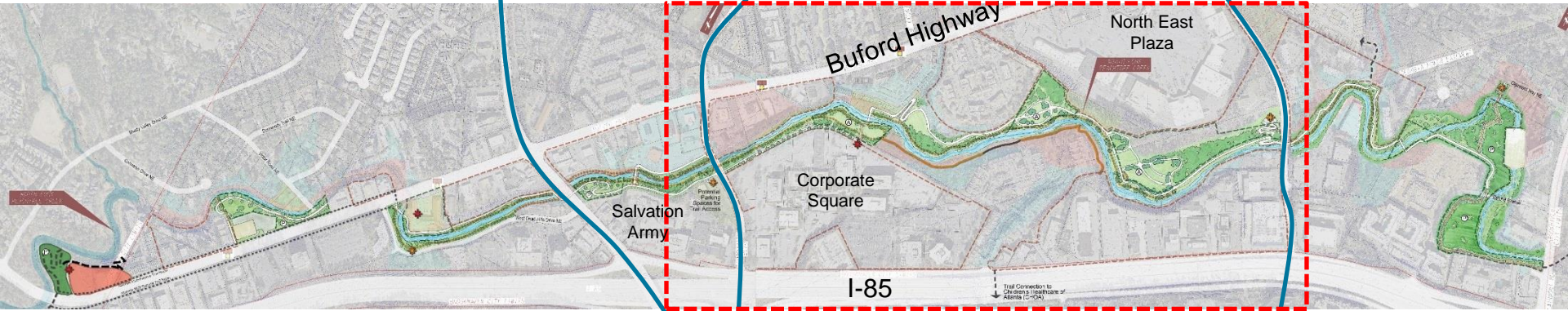
Peachtree Creek Greenway - Overview

Master Planning Process

North Druid Hills

Corporate Boulevard

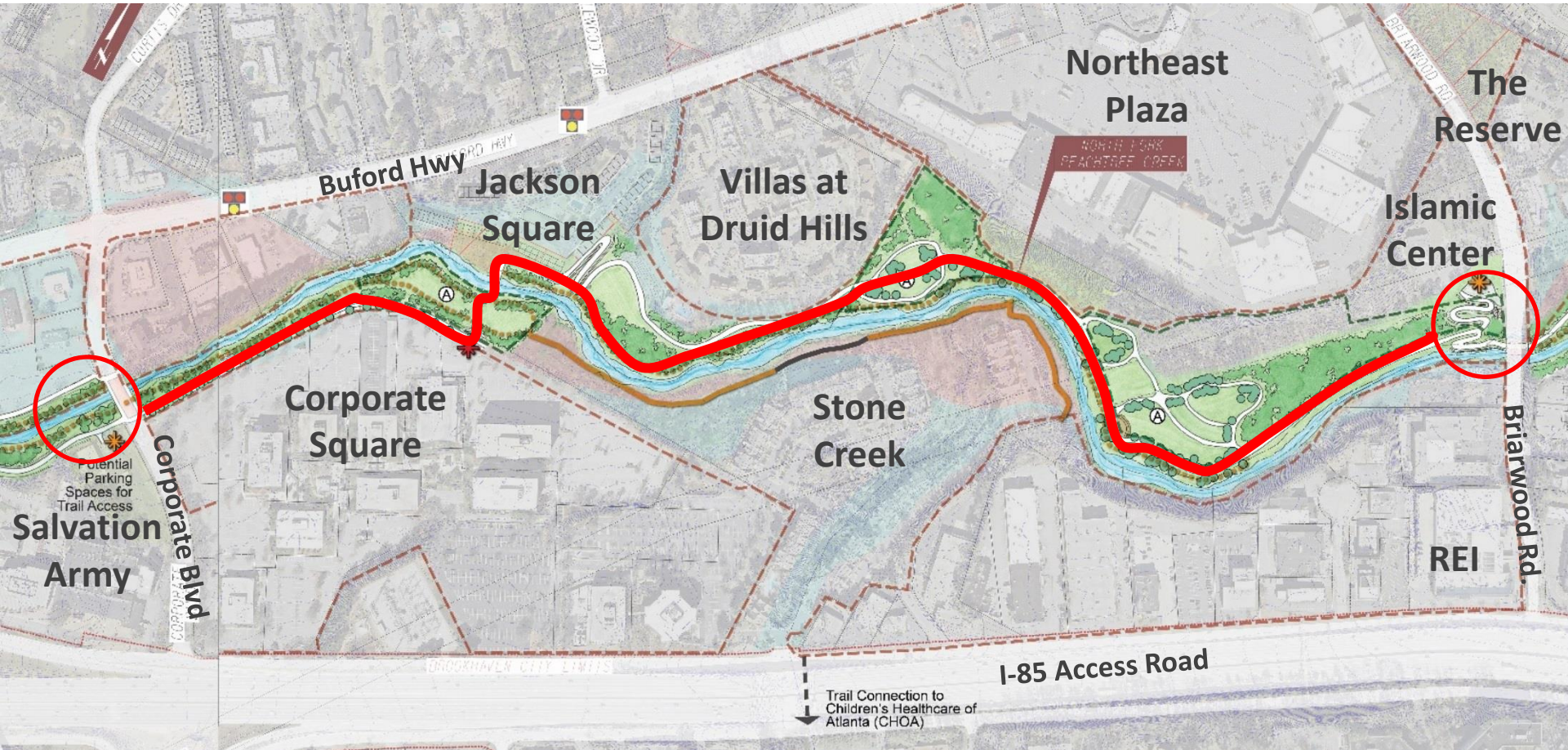
Briarwood Road



Phase 1 Implementation of the Adopted Peachtree Creek Greenway Master Plan

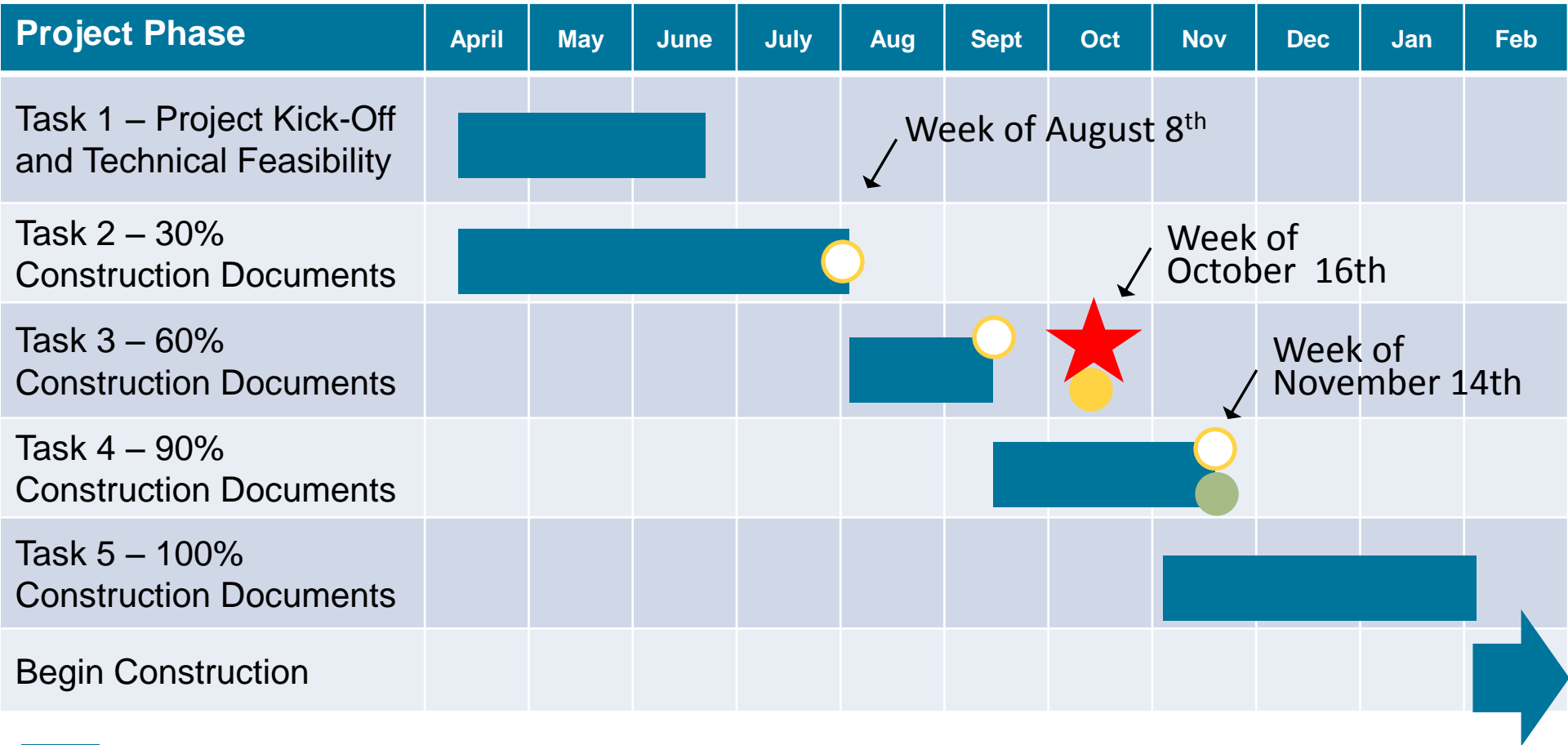


Peachtree Creek Greenway Phase 1



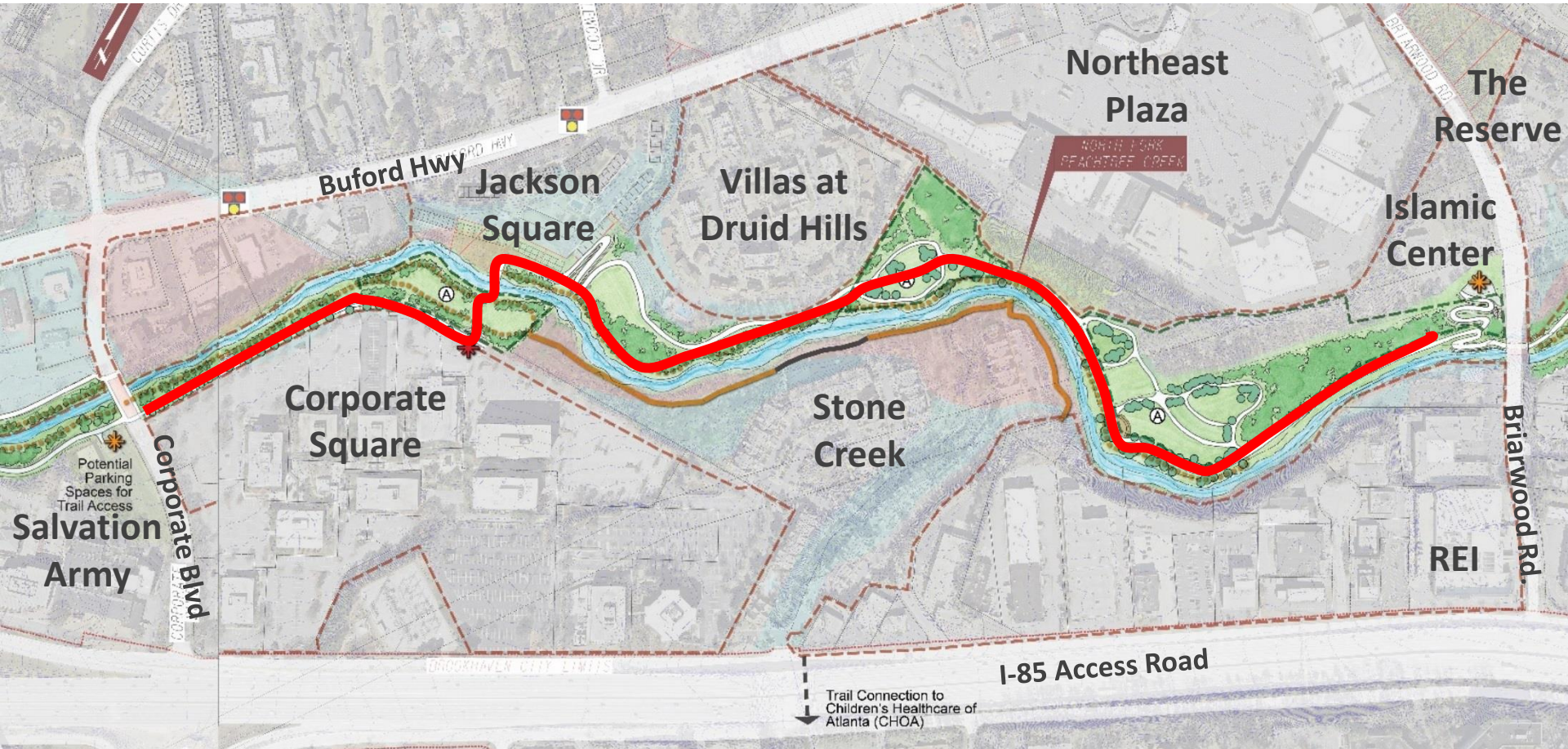
Schedule and Design

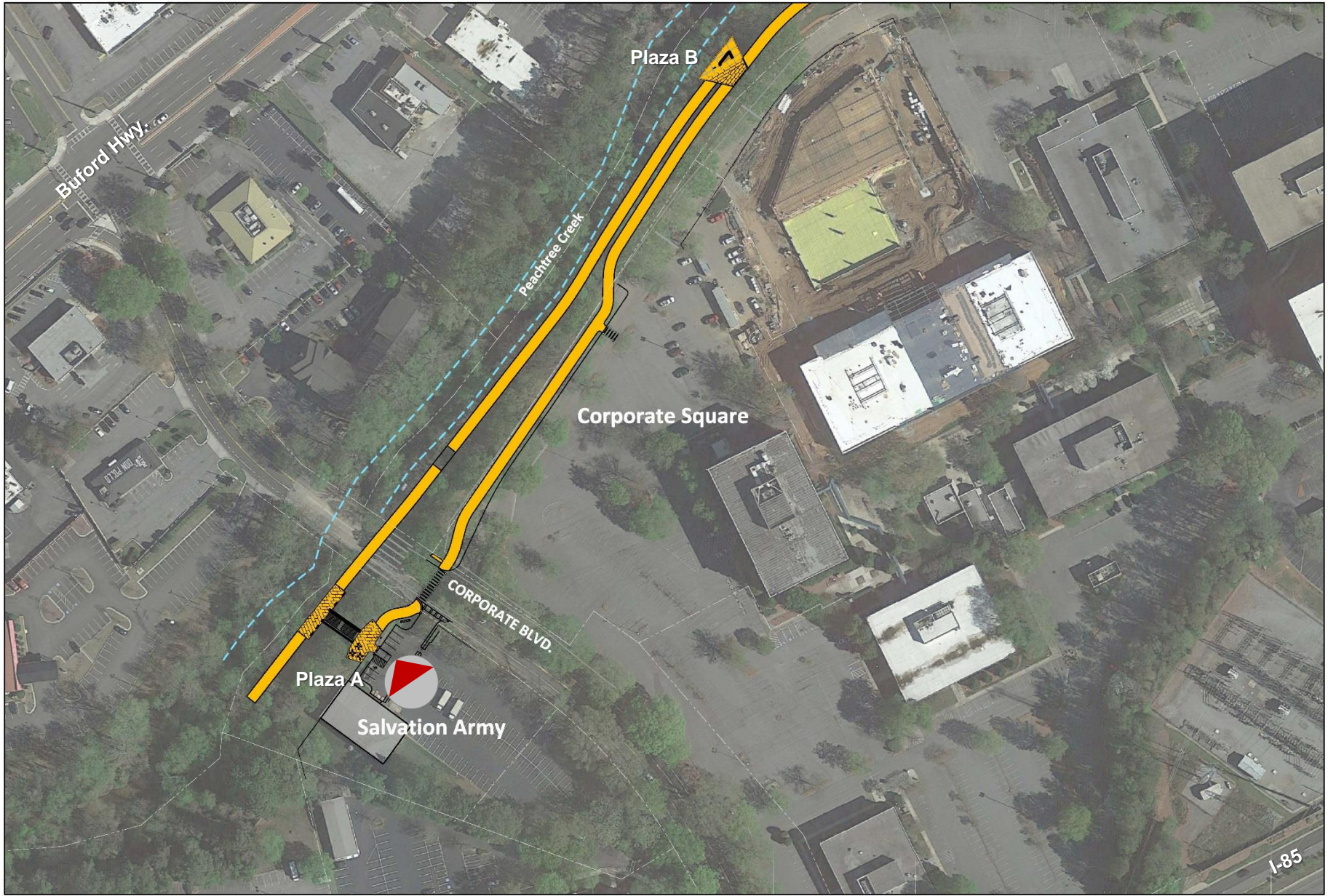
Project Scope + Schedule



- [Blue Bar] Task
- [Yellow Circle] Steering Committee Meeting
- [Yellow Circle] Public Open House
- [Green Circle] City Council Meeting

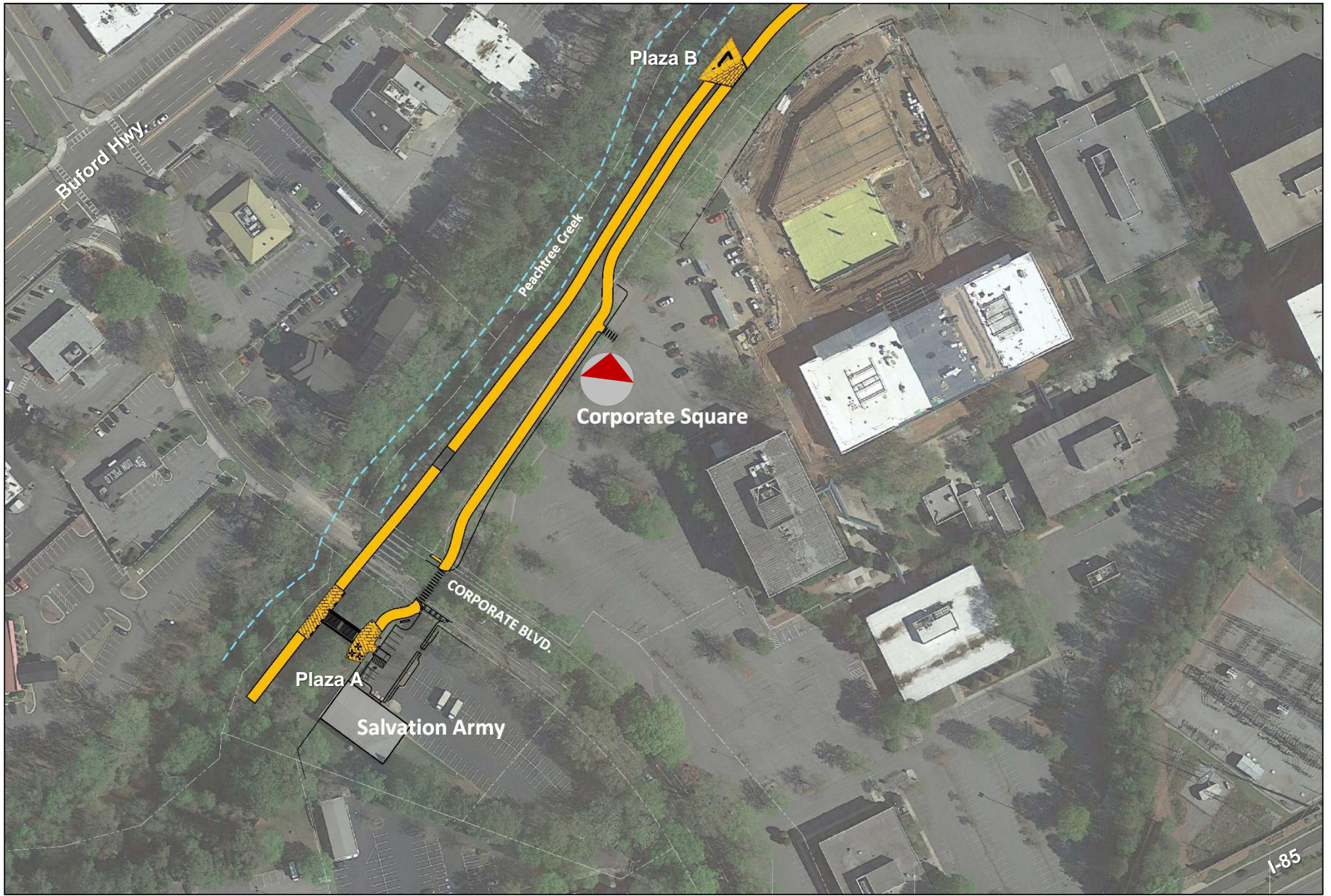
Peachtree Creek Greenway Phase 1





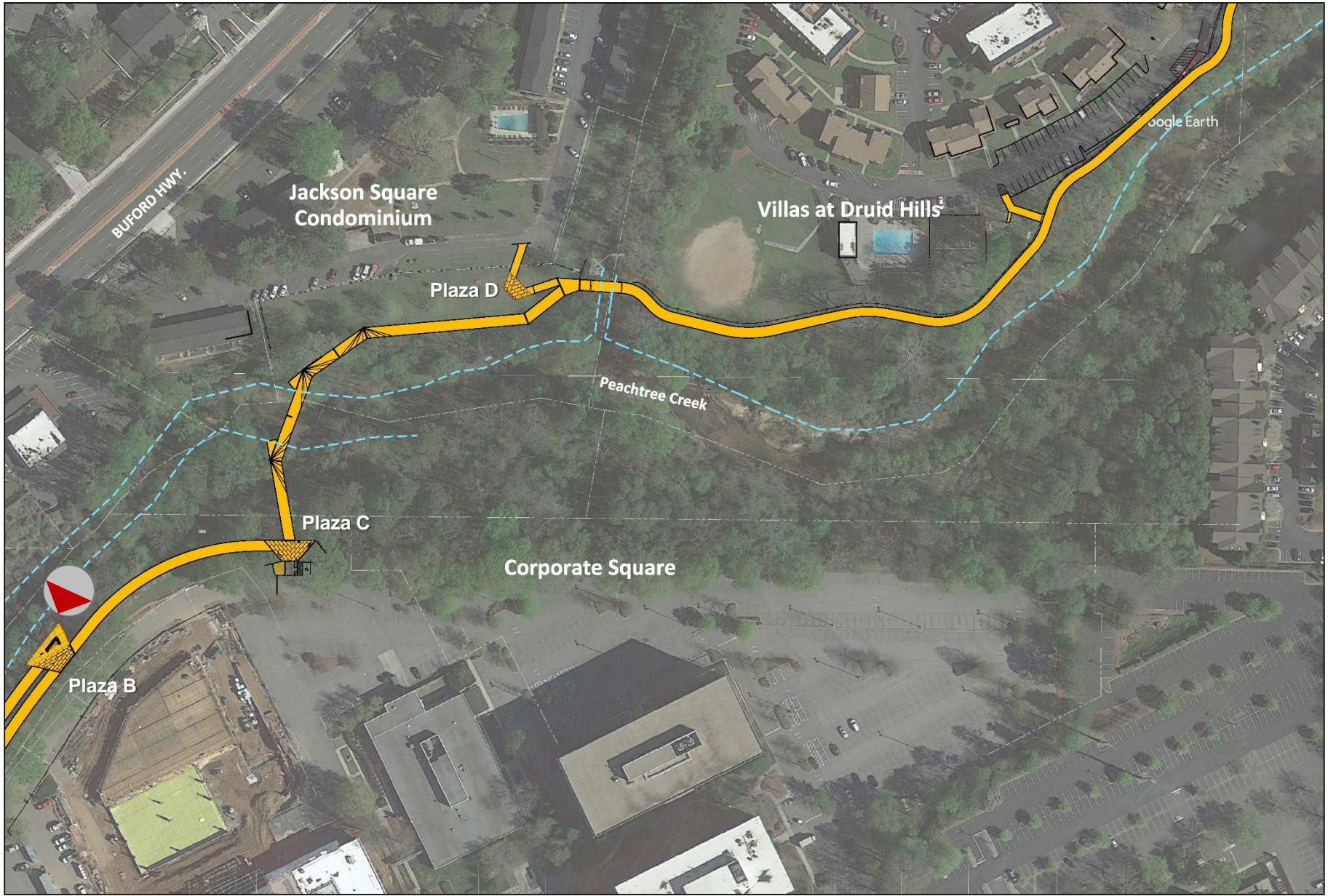






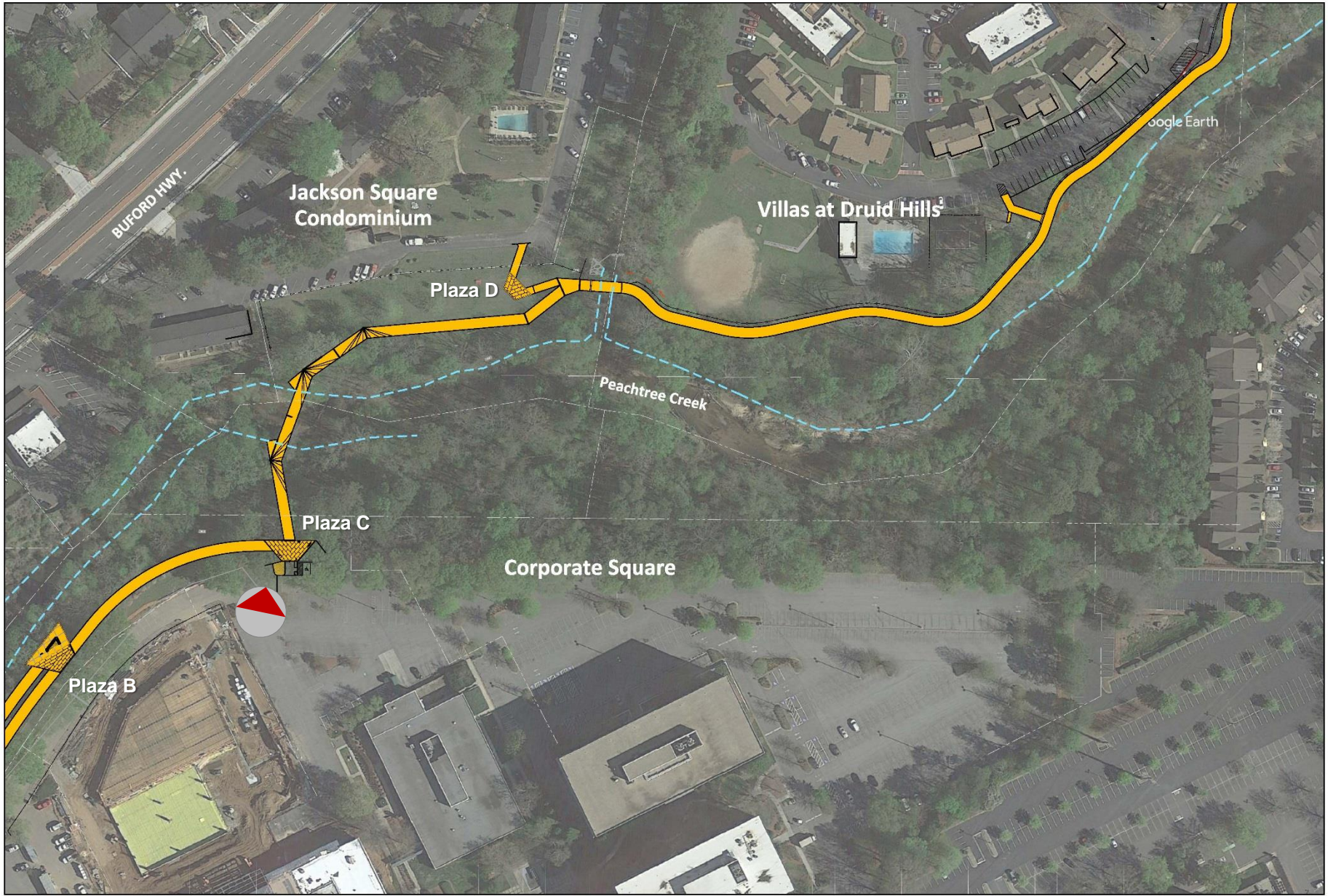






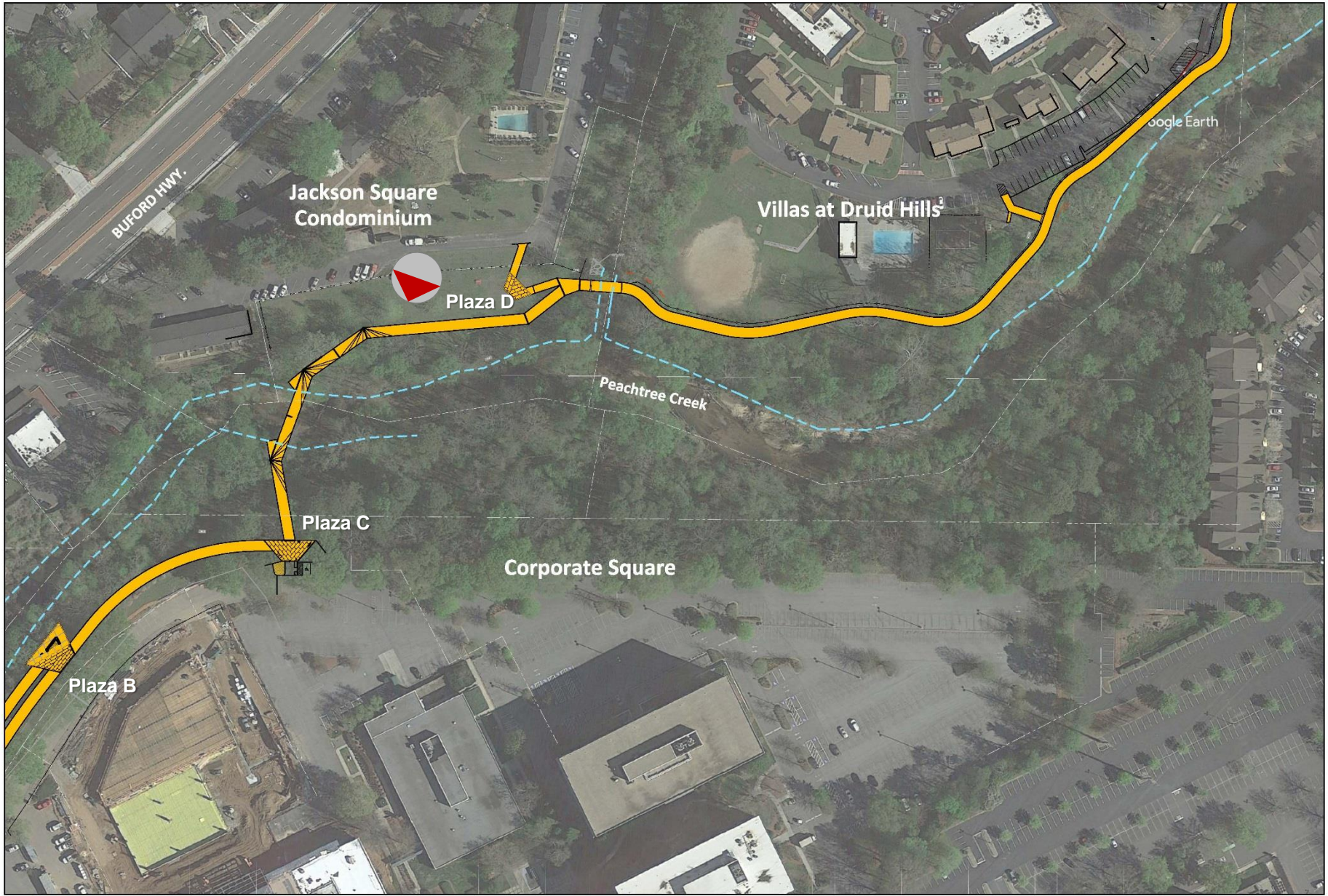






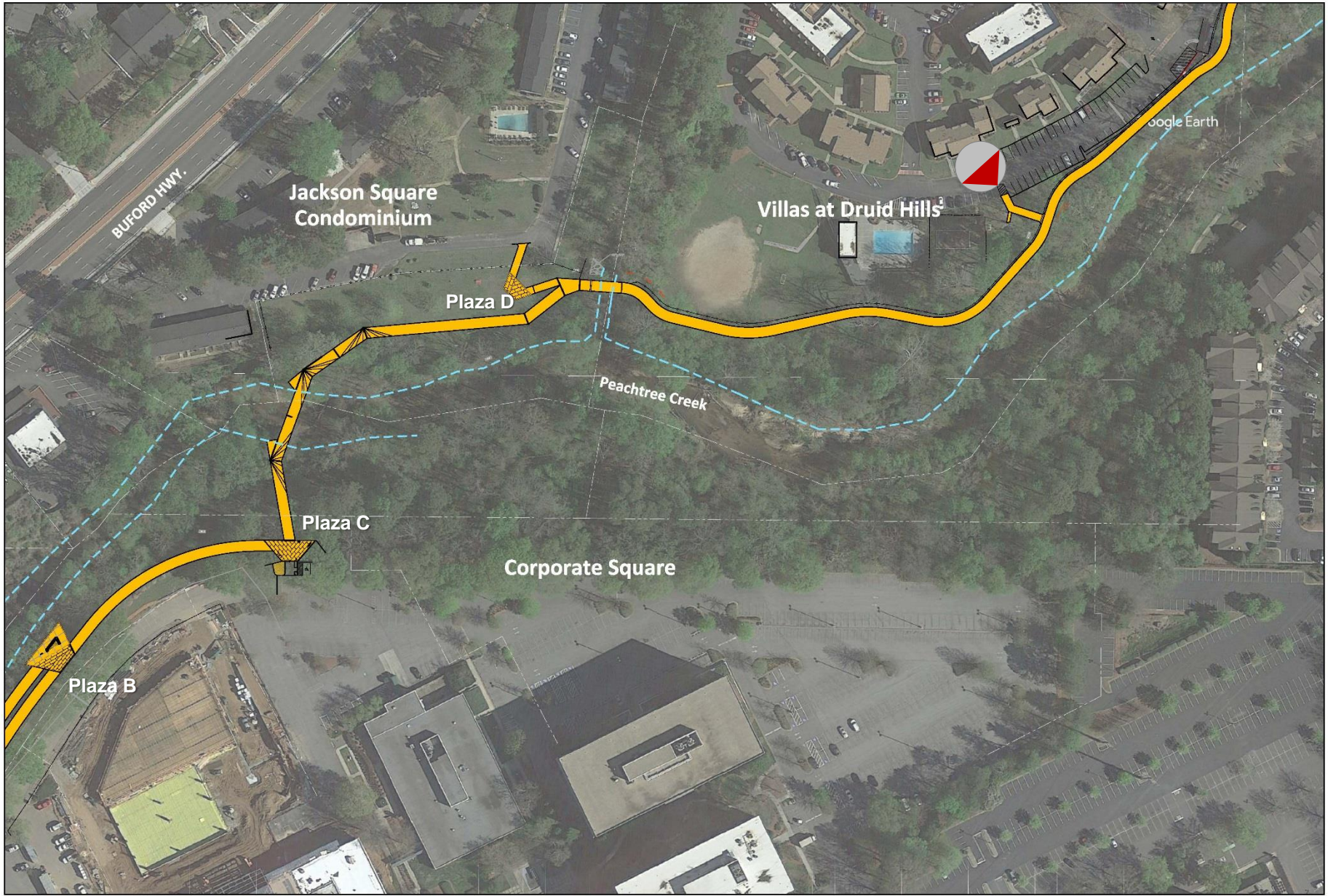






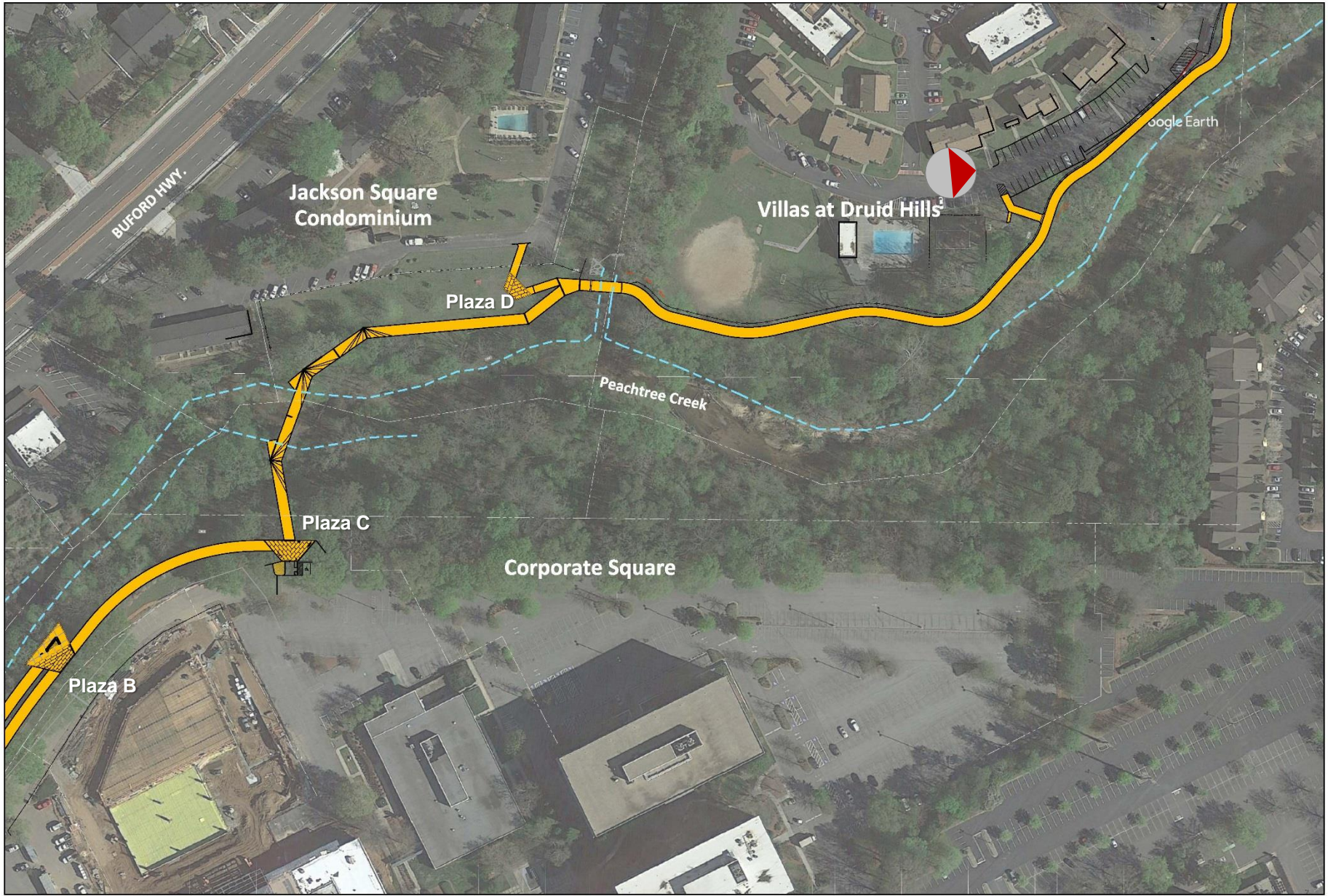


















Northeast Plaza

Georgia Power Easement

Lifestyle Family Group

Plaza E

Peachtree Creek

Villas at Druid Hills

Google Earth







Amenities / Design Standards

Option 1





Concept 2



Peachtree Creek
Greenway

Peachtree Creek
Greenway



Final Signage Design



KIOSK SIGN-FRONT
(27" X 84",
33" X 68")

KIOSK SIGN-BACK
(27" X 84",
33" X 68")

**KIOSK SIGN -
SIDE VIEW**

TRAIL RULES

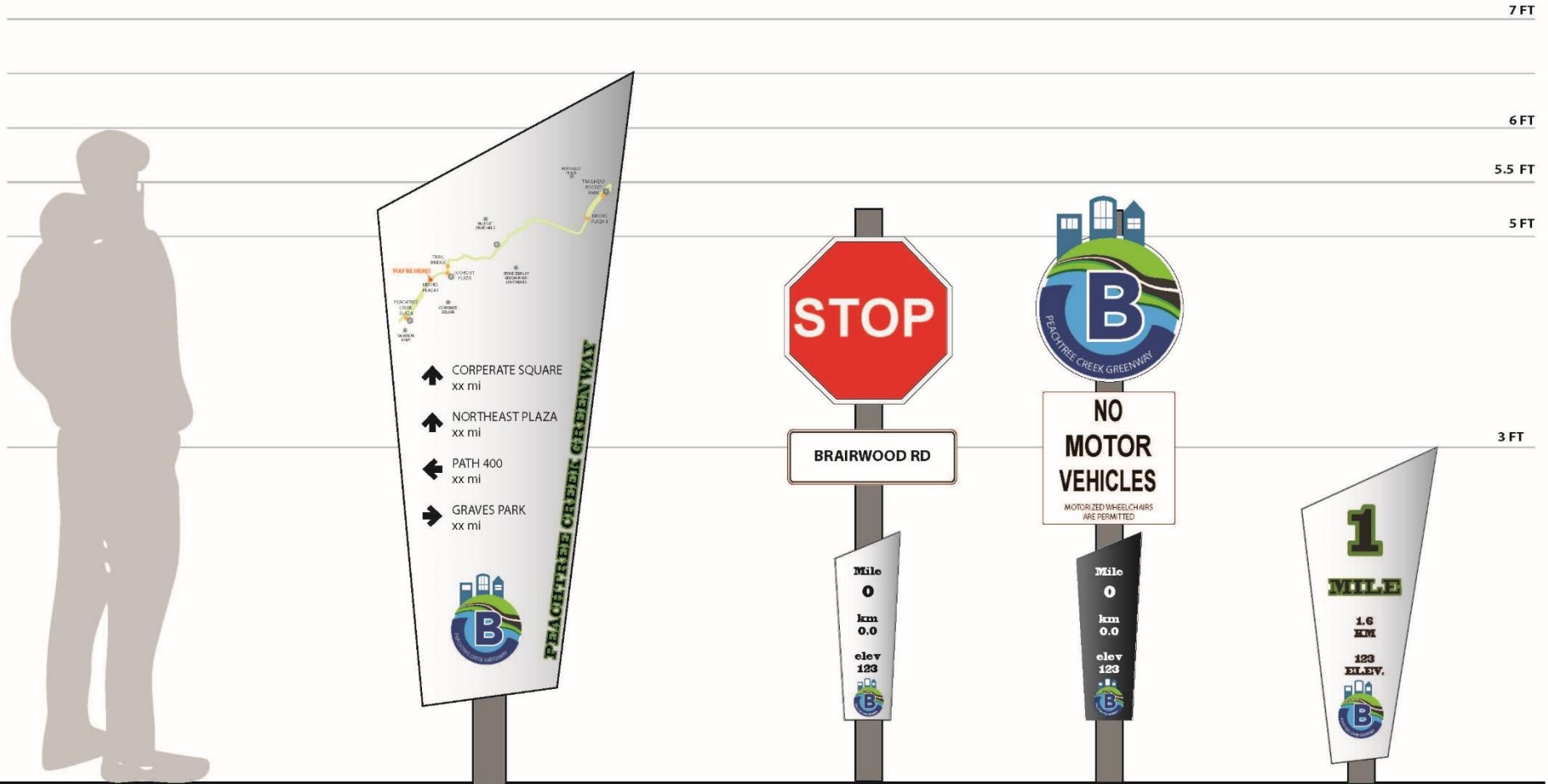
- THE TRAIL IS OPEN TO ALL NON-MOTORIZED USERS. (MOTORIZED WHEELCHAIRS ARE PERMITTED)
- THE TRAIL IS OPEN FROM DAWN TO DUSK. THE TRAIL IS CLOSED AT NIGHT.
- TRAIL USERS REFRAIN FROM ENTERING POSTED PRIVATE PROPERTY.
- ALCOHOLIC BEVERAGES, DRUGS, AND UNLICENSED FIRE ARMS ARE NOT ALLOWED ON THE TRAIL.
- VANDALISM AND THEFT OF TRAIL AMENITIES WILL RESULT IN PROSECUTION.
- RECKLESS USE OF A BICYCLE OR SKATES WHICH ENDANGERS OTHER TRAIL USERS IS PROHIBITED.
- AS A COURTESY TO OTHER TRAIL USERS, PLEASE REFRAIN FROM TOBACCO USE ALONG THE TRAIL.

A RECREATIONAL TRAIL SYSTEM FOR EVERYONE

In the fall of 2017, a partnership between the City of Atlanta and the PATH Foundation constructed the Northwest Atlanta BeltLine Connector to provide direct access for citizens from nearby neighborhoods to the Atlanta BeltLine Trail and the PATH system of trails. The partnership envisioned generations of happy, healthy North Atlanta residents walking and biking through the city without having to encounter cars.

Special thanks to Atlanta Councilmember Yolanda Adrean, neighborhood leaders James Worrell and Catherine Spillman, and the incredible donors to PATH for making this trail possible. Please enjoy the trail safely.

Final Signage Design



SECONDARY SIGN
(33" X 68")

REGULATORY SIGN
(FRONT/BACK)

MILEAGE MARKER
(6.5" X 24")

Site Furnishings - Bench



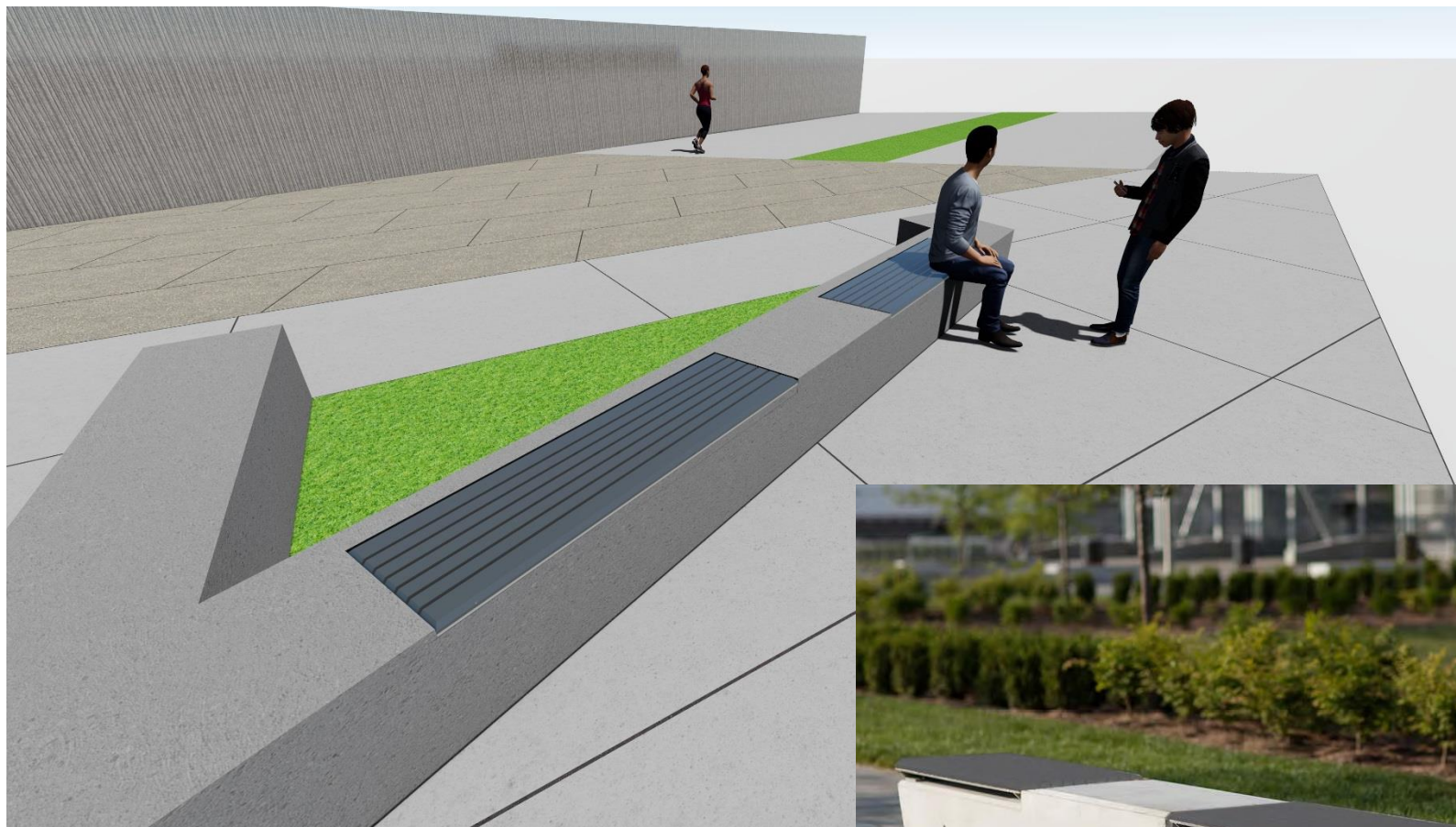
Knight Benches

by Forms+Surfaces

- Aluminum powder coated frames and aluminum slats
- Back/backless



Site Furnishings – Seat Wall Insert Bench



Forms+ Surfaces Knight 6' Wall
Mount Bench

Trash/ Recycling Receptacle



Dispatch Litter/Recycling Receptacle
by Forms+Surfaces

- Aluminum construction with powdercoat finish in Slate Texture with option of sliver top
- Single-stream models, sidedoor

Bike Rack



Capitol Bike Rack
by Forms+Surfaces

- Solid cast aluminum construction
- Durable powdercoat finish in sliver texture
- Clean, bold lines for contemporary settings, matches other trail amenities as a whole
- \$1112

Portable Table and Chairs



Citrus Table

by Forms+Surfaces

- 36" Dia. Stainless steel top with perforated pattern
- Base in durable powdercoat finish in sliver texture



Avivo Chair

by Forms+Surfaces

- Powdercoat Blue, Armless
- Perforation pattern on seats and back



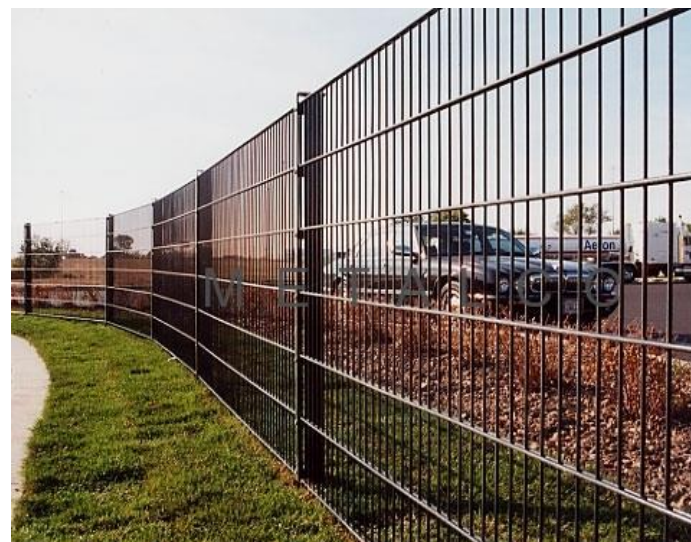
Railings



Standard Fencing



- Ameristar Fence



- Metalco Twinbar Fence
- Wire Mesh - Black

- Collect Public Comment
- Finalize Environmental Permitting
- Incorporate Final Design Revisions
- Issue 100% Design and Engineering for City/County Permitting
- Advertise Project for Construction
- Begin Construction – Winter/Spring 2018

Questions & Answers



Peachtree Creek Greenway Phase 1



Open House – October 16, 2017



KAIZENCOLLABORATIVE
Landscape Architecture | Planning | GIS

PEREZ PLANNING + DESIGN, LLC