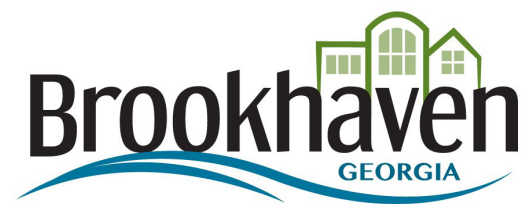


Appendix F:

City of Brookhaven Streetscape Design Standards



City of Brookhaven, GA Streetscape Design

BROOKHAVEN, GA | AUGUST 28, 2018

HOUSER WALKER ARCHITECTURE

Lighting - Fixture

Flexibility and Versatility

Appealing Form

The Generation Series LED luminaire is designed to offer a multitude of both traditional and contemporary forms to meet varying market needs. Combining three distinct bases, four unique cage assemblies and a variety of tops and finials, over 100 different styles can be created to complement virtually any application.

Light Fixture Option:

Manufacturer: Eaton

Model #: ARC-080-E-U-(TBD)-3-7-3-GM

Top Type: Architectural

Finial Type: Architectural

Cage Type: Architectural

Base Type: Architectural

Globe Type: Acrylic

Color: Graphite Metallic



Architectural



Architectural
(Spun Top / Top Access)



Architectural



Architectural



Refractive Globe (Type III or V)
Acrylic or Polycarbonate

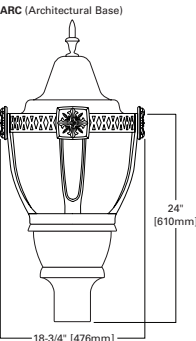
Ordering Information

Sample Number: ACN-080-LED-E-U-33-1-7-3-BK

Product Family	LED Series	Driver	Voltage	Reflector Type	Cage Type ¹	Top Type	Finial Type	Color
ACN=Acorn Base ARC=Architectural Base CLB=Classical Base	080=080 Series	E=Non-Dimming D=Dimming	U=Universal (120-277V)	33=Type III 55=Type V	Classical 1=Classical A=Classical Sun Gold B=Classical Antique Gold C=Classical Colonial Bronze Modern 2=Modern D=Modern Sun Gold E=Modern Antique Gold F=Modern Colonial Bronze Architectural 3=Architectural G=Architectural Sun Gold H=Architectural Antique Gold J=Architectural Colonial Bronze 6=Avenue ² X=None	1=Acorn 2=Modern 3=Victorian 4=Classical 5=Avenue (Top Access) ² 6=Nostalgic (Top Access) 7=Architectural (Top Access)	1=Victorian 2=Modern 3=Architectural 4=Nostalgic X=None	AP=Grey BZ=Bronze BK=Black DP=Dark Platinum GN=Hartford Green GM=Graphite Metallic WH=White
Options (Add as Suffix)				Accessories (Order Separately)				
2L=Two Circuits SH=Street Side / House Side Switching A=Twistlock Globe B=Decorative Brass Banding ³ C=Copper Accents 4=Internal NEMA Photocontrol Receptacle U=UL/CSA Listed P=Polycarbonate Refractor				OA1222=10kV Surge Module GLK080EU=Generations LED Retrofit Light Engine Kit GLK080EU2L=Generations LED Retrofit Light Engine Kit wired for Two Circuit Dimming GLK080EUSH=Generations LED Retrofit Light Engine Kit wired for Street Side / House Side Dimming				

NOTES: 1 Cage type painted to match base. 2 Avenue cage only available with Avenue Top and Architectural base. 3 Available with Acorn and Victorian tops only.

Dimensions

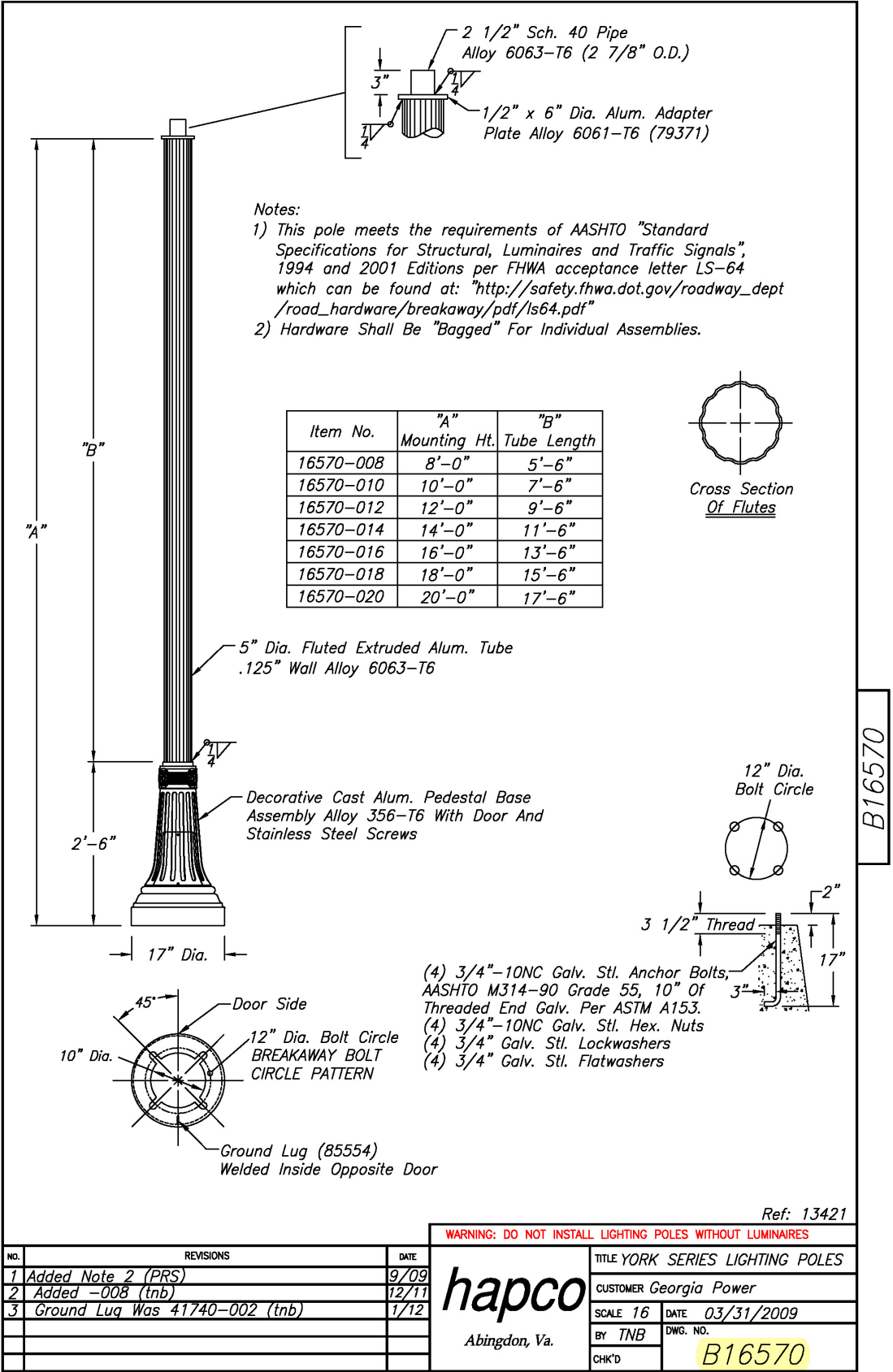


Final Order #: ARC- 080-E-U-(TBD)-3-7-3-GM

Lighting - Base

Light Base/Pole Option:
Manufacturer: Hapco
Model - Pole: York Series Light Pole
Model #- Pole: B16570
Item # - Varies by height - see schedule to right.
Model #- Base: 356-T6

Color: Graphite Metallic to match Fixture

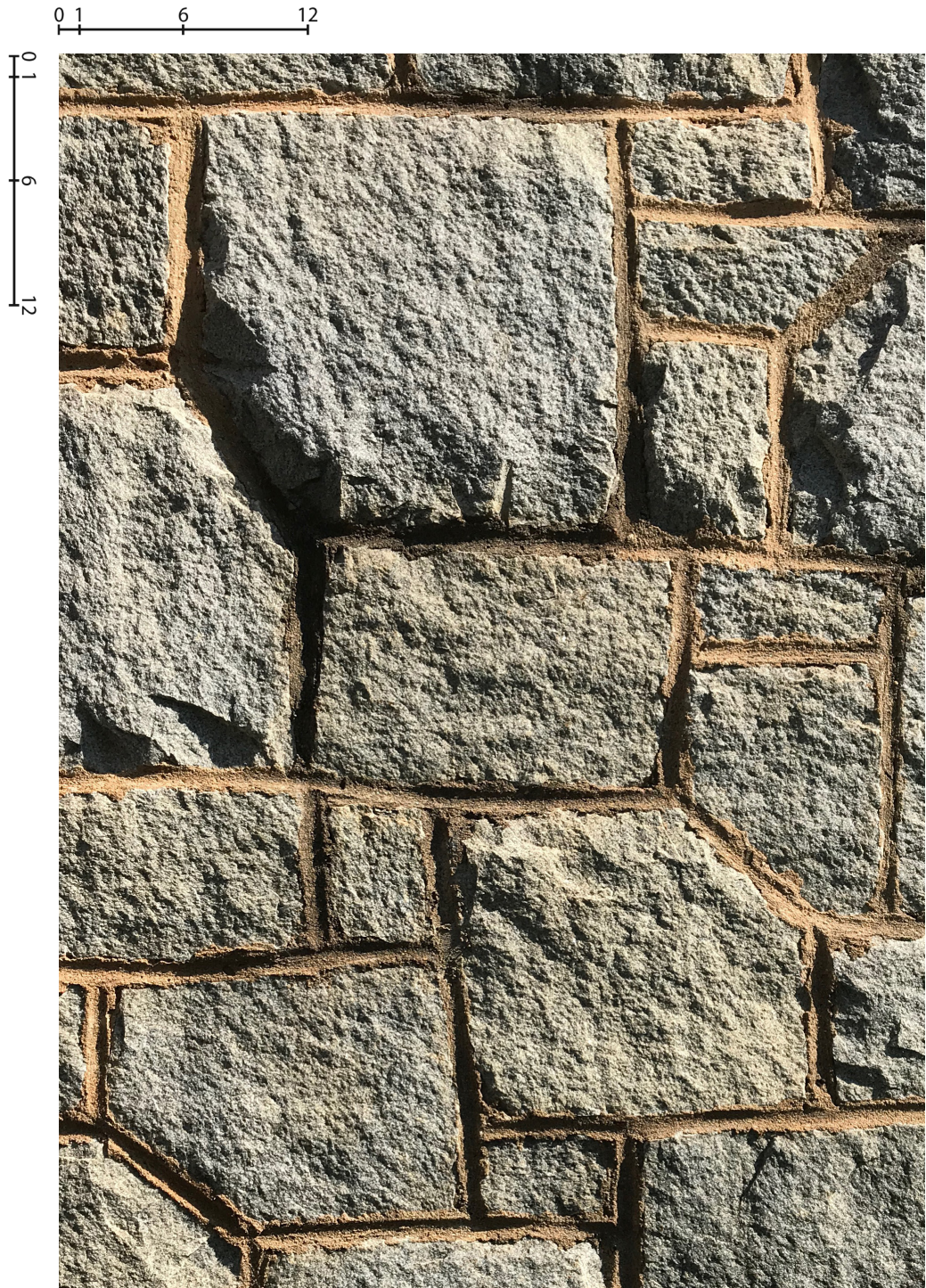


Granite Walls

Notes:

- 1. Granite shall be Georgia Blue Granite, similar to that found at the historic Stone Mountain Quarry. The stone should be a rough or rubble texture, approximately 4"-5" deep when utilized in a facing veneer application and sized as required if utilized in a structural application.
- 2. Walls should be installed with inconspicuous weeps and a full mortar net above the solid grout filled line. Designer to determine if flashing is required.
- 3. Stone pattern to approximate overall pattern at right, a random ashlar with tight fitting joints that are even across the wall, approximately 1/2", tooled to a "beaded" joint.
- 4. Mortar color to be finalized to match coloration of final stone by designer.
- 5. Mortar to be Type S unless recommended by Designer.

Scale to right shown in inches.



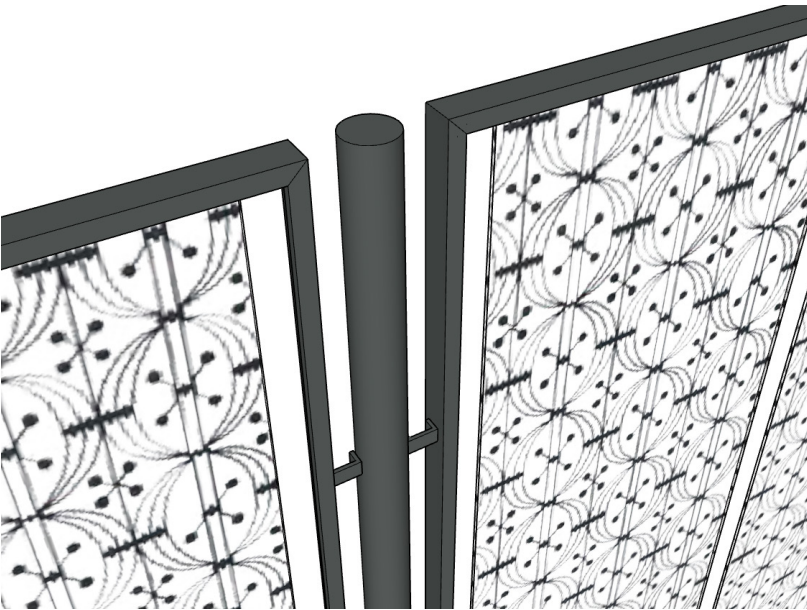
Guard Railing Systems

Material: Hot rolled Steel
Finish: Powdercoat finish
Infil Panel Design: TBD
Connectors hardware: Stainless Steel 304
Base insert: Stainless steel sleeve, 2" diameter, backfilled with non-shrink grout.
Inset depth to be 12" minimum.

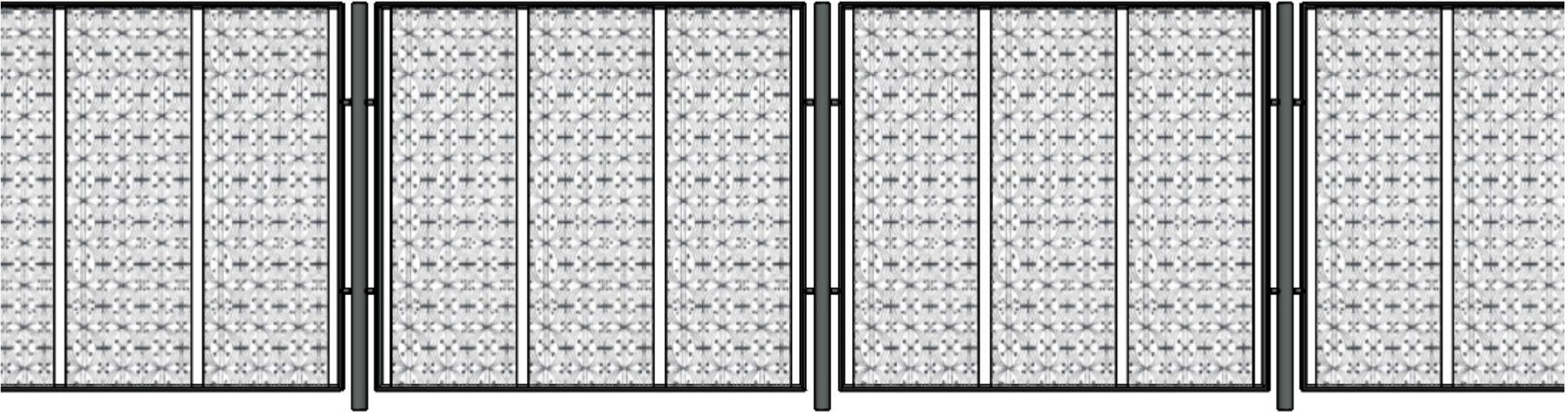
Notes:

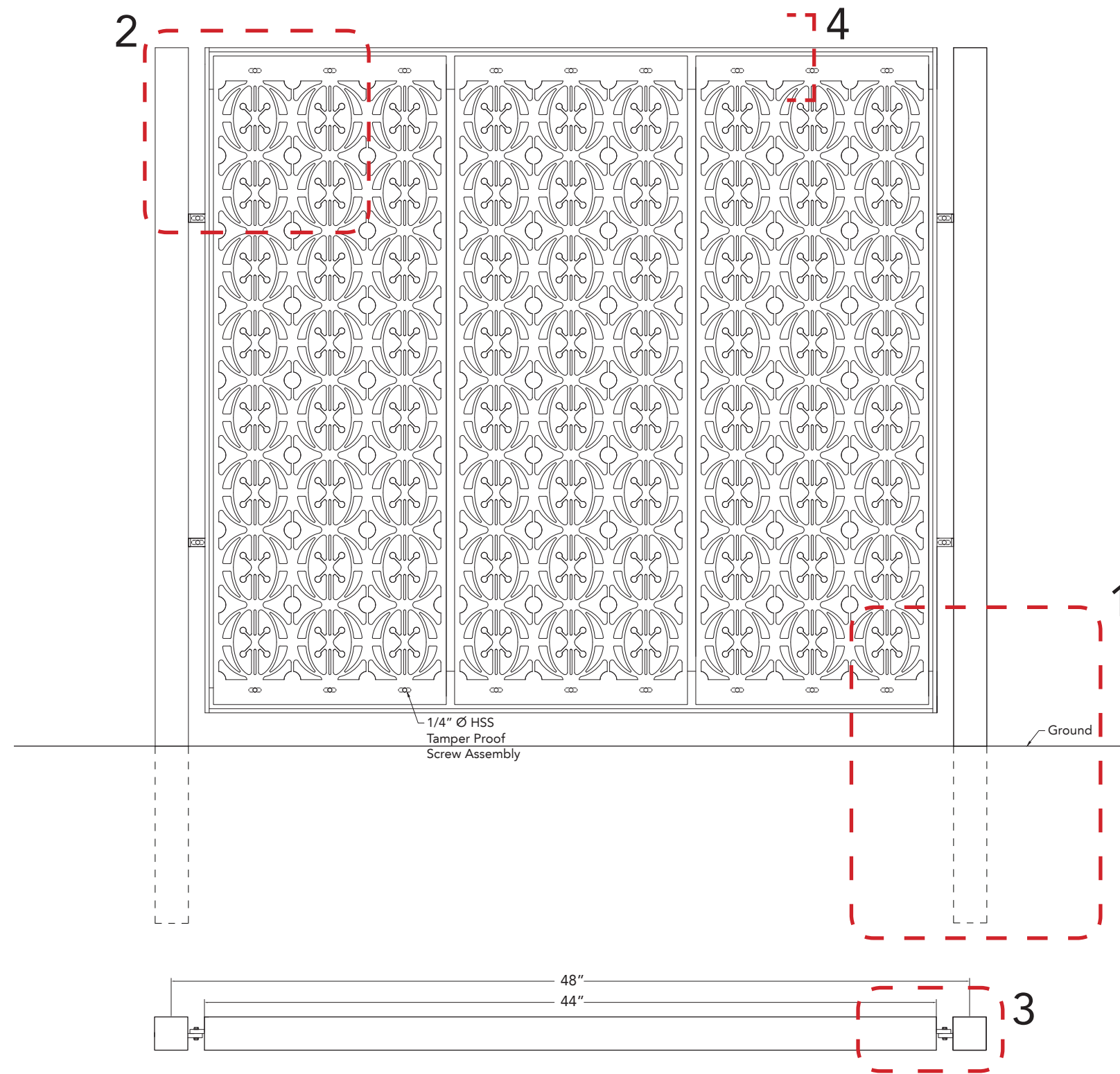
- 1. The railings will be a square pipe rail frame, at 4 foot intervals, that accepts digitally fabricated metal panels that can reflect the unique situations and locations that they are installed in.
- 2. All steel to be shop welded and finished.
- 3. Finish assembly to be completed in field.

Color: RAL 9007



Detail at Connector

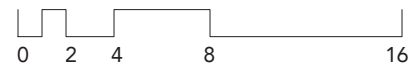




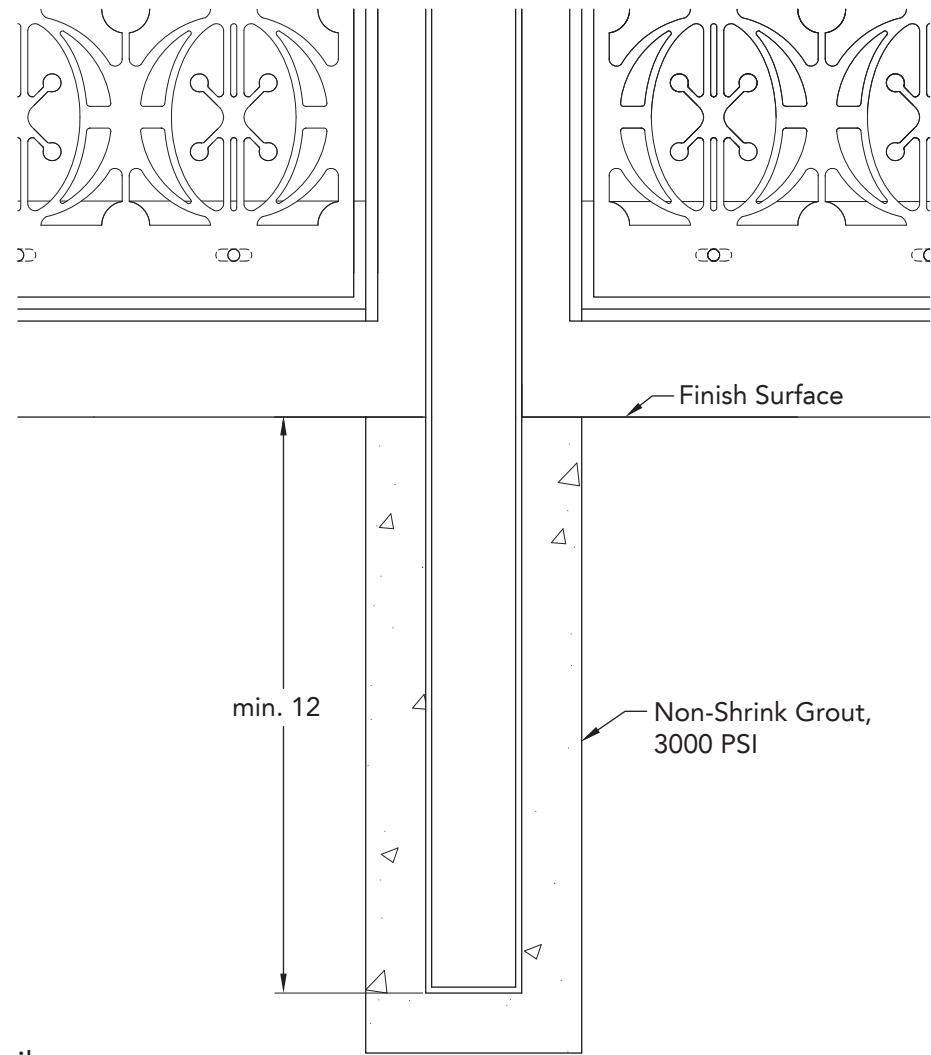
Typical Bay Elevation



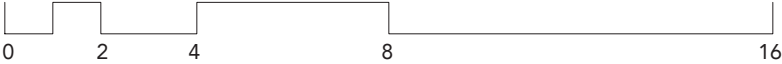
Typical Bay Plan



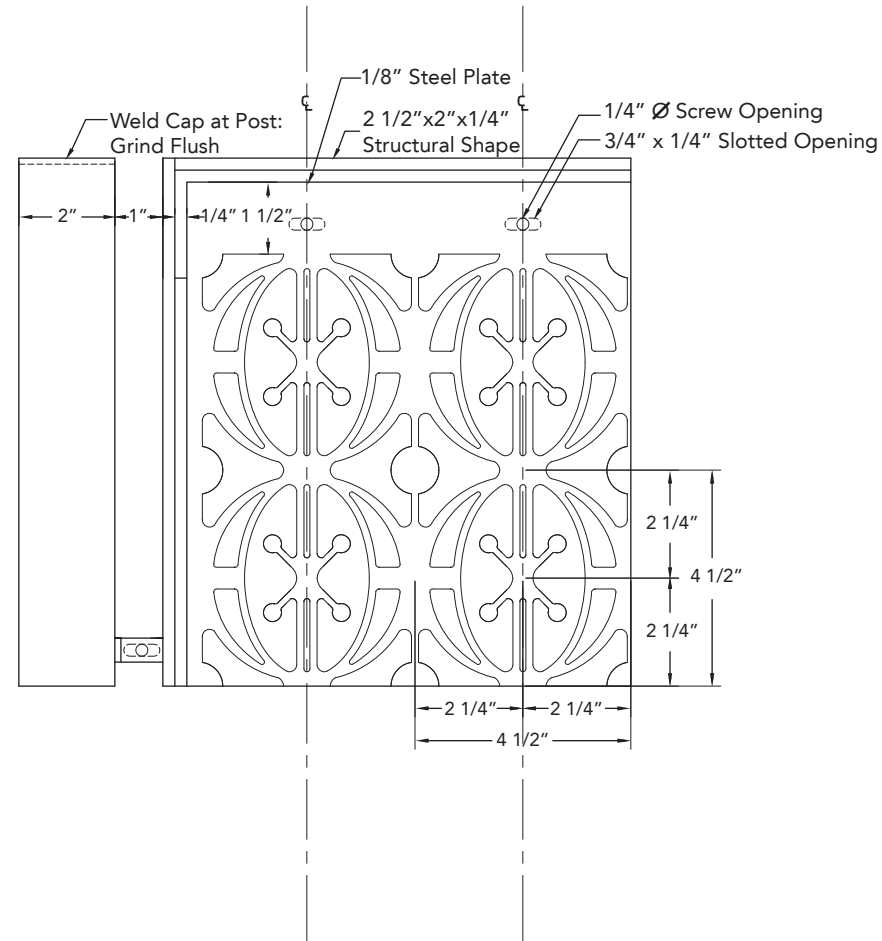
1



Post Anchor Detail



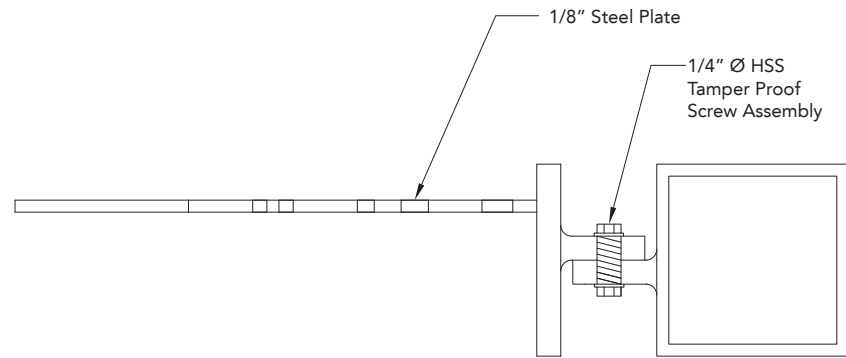
2



Elevation Detail at Panel



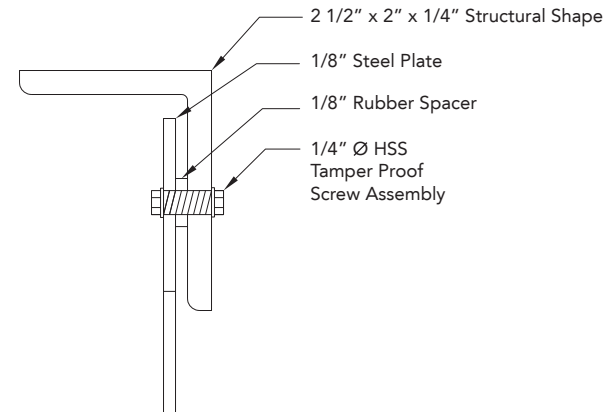
3



Plan Detail at Frame/Post Connection



4



Section Detail at Frame/Panel Connection




Notes:

- 1. The same font family or families should be used across all official signage.
- 2. The font used by the City is Book Antiqua Bold. Sizing of typography to be determined by Designer based on the application.
- 3. Paints, when needed, should be as listed to the right. Paint type should be determined by Designer based on application, substrate, exposure, and weathering needs.
- 4. Additional materials for signage, when required, should conform to the Aluminum and Cast Stone as shown at the right.
- 5. All signage should be coordinated with the City.

EXTERIOR SIGNAGE NOTES AND FINISHES

PAINT SCHEDULE

	P1	AkzoNobel Dulux <i>Spider's Web - 90YY 73/040</i>
	P2	Matthews Paint <i>Obsidian - MP04836 LRV 6.5</i>

MATERIAL SCHEDULE

	M1	1/8" Thick Aluminum
	M2	Aztec Field Stone http://aztecstoneempire.com/products/elberton-granite-rubble
	M3	Continental Cast Stone - Smooth Face 1103 Whitestone http://www.continentalcaststone.com/colors/default.htm

ABCDEFGHIJKLMNOPQRSTUVWXYZ
abcdefghijklmnopqrstuvwxyz

TYPEFACE 1 - Book Antiqua Bold

Bench

Street Bench Base Option:

Manufacturer: Forms+Surfaces

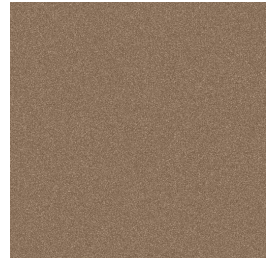
Model: Cordia Bench

Model #: SBCOR-72BAA1

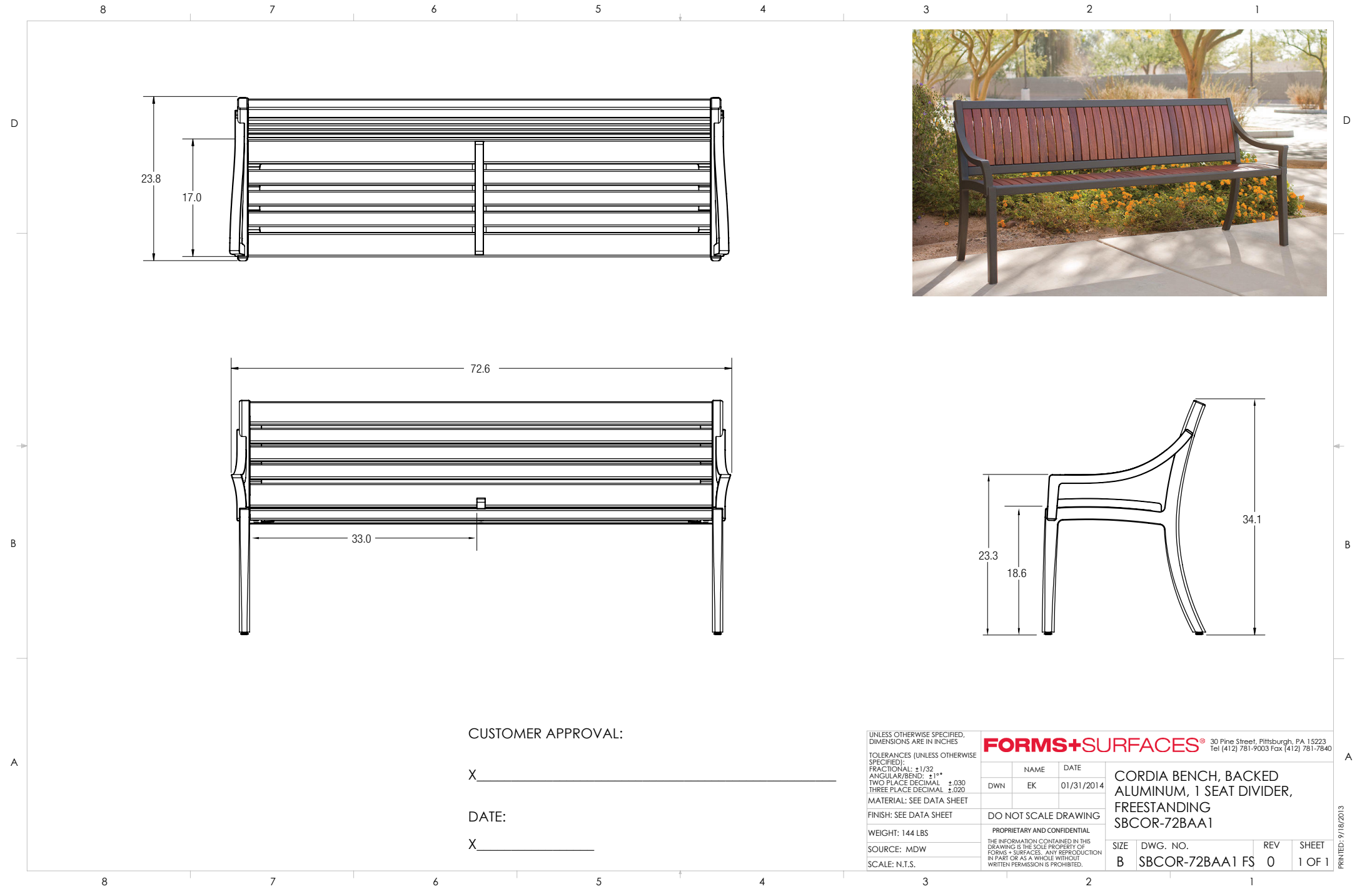
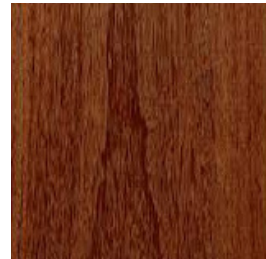
Intermediate Arm: Available

Length: 72.6"

Base Color: Dark Bronze Metallic



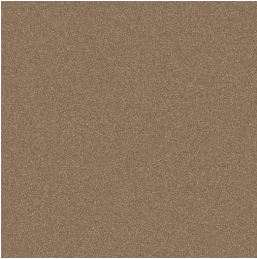
Seat/Back Material: FSC® 100% Jatoba
hardwood.



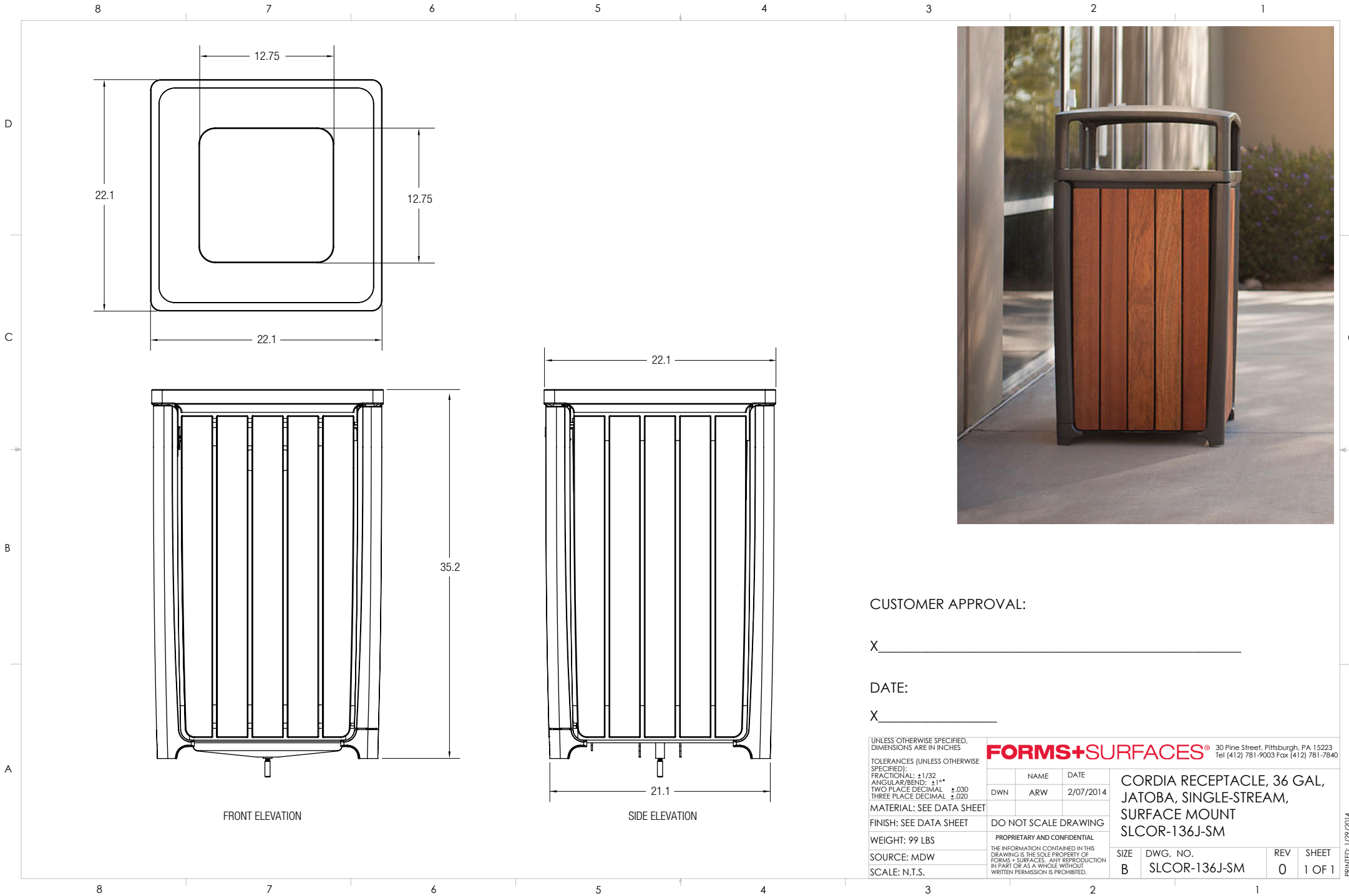
Trash Receptacle

Trash Receptacle Base Option:
Manufacturer: Forms+Surfaces
Model: Cordia Receptacle, 36 GAL
Model #: SBCOR-136J-SM
Include rain protected top

Base Color: Dark Bronze Metallic



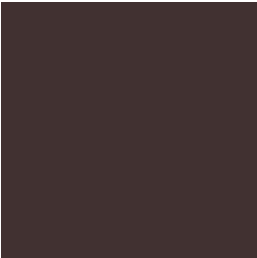
Infill Material: FSC® 100% Jatoba hardwood.



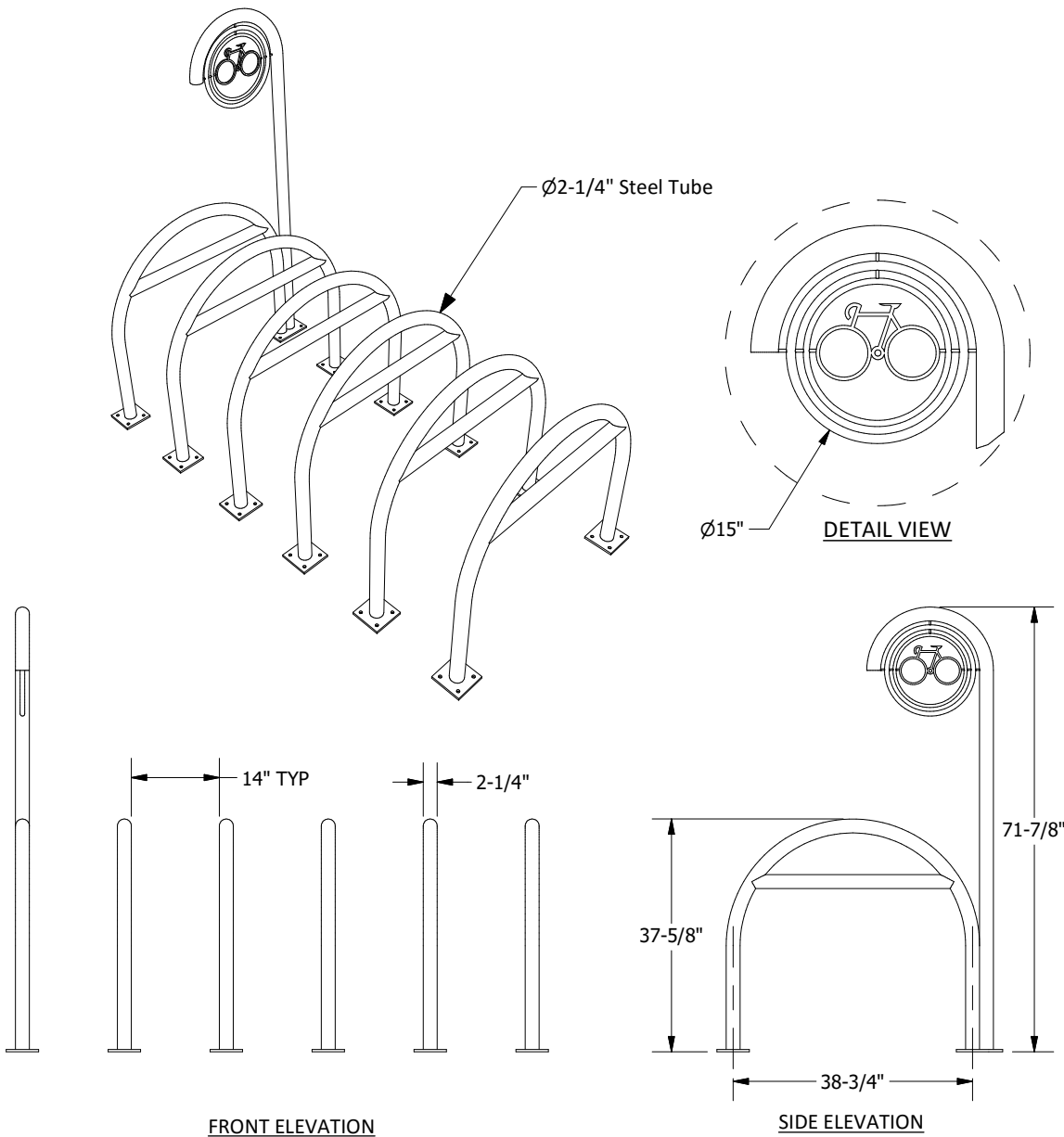
Bike Rack

Bike Rack Base Option:
Manufacturer: Canterbury Designs
Model: Campus Bike Rack
Model #: BRCP-72
Length: Varies - as needed by circumstances and site location. Configuration as shown is 72" in length.

Base Color: RAL 8019



Logo: Custom logo can be installed where the bike symbol is shown.



- NOTES:**
1. All metal components are sandblasted, cleaned, and finished with zinc epoxy primer and polyester powder coat.
 2. All dimensions nominal.
 3. Anchor bolts by others.

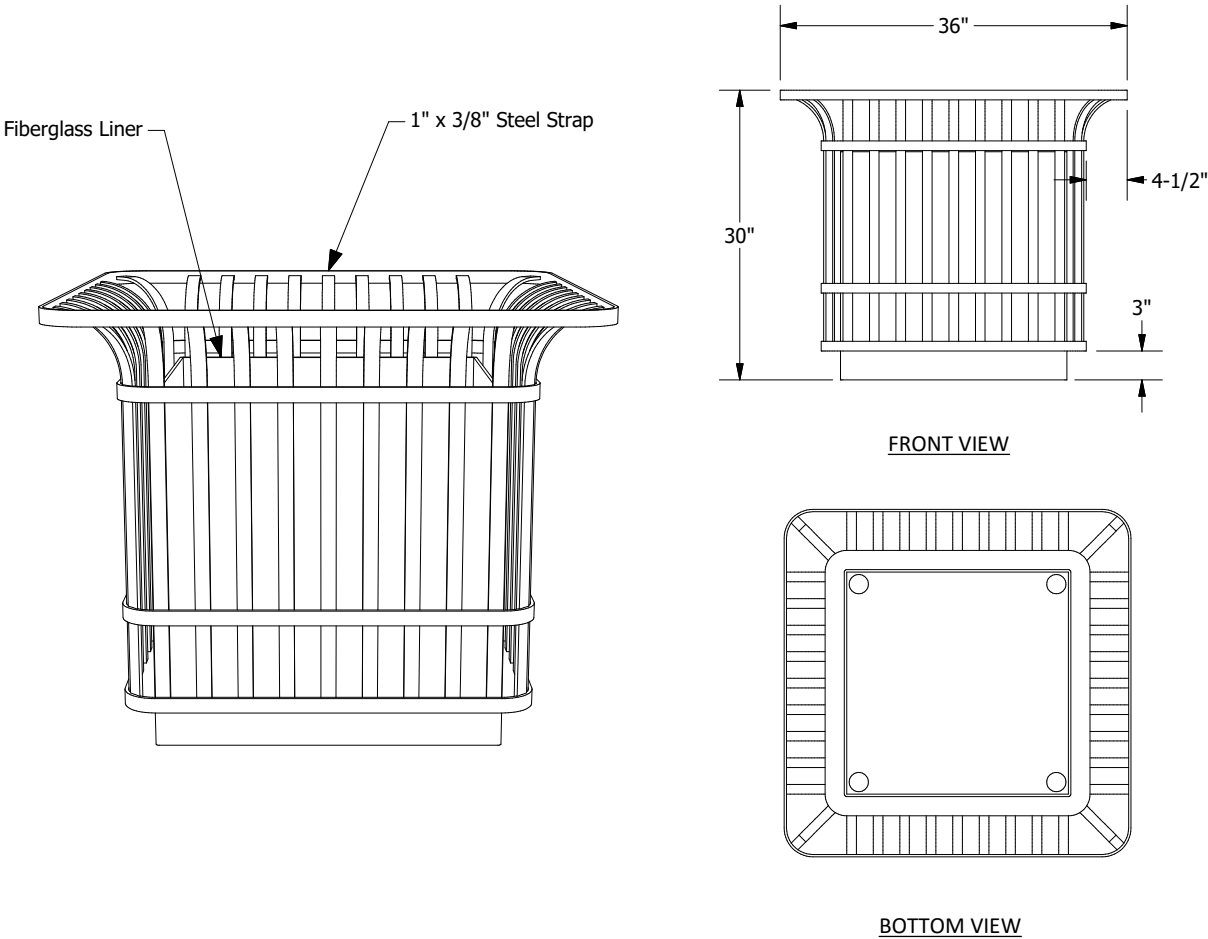
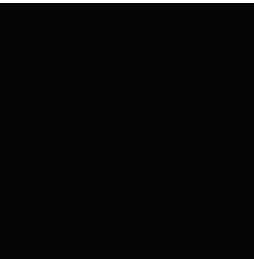
Planter

Planter Base Option:
Manufacturer: Canterbury Designs
Model: Bowery Planter - 36" Square
Model #: PLBW-36-SQ

Base Color: RAL 8019



Liner Material: Gloss black coated fiberglass

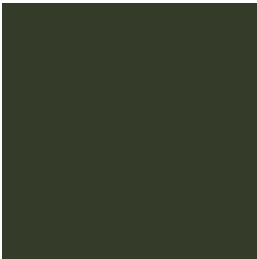


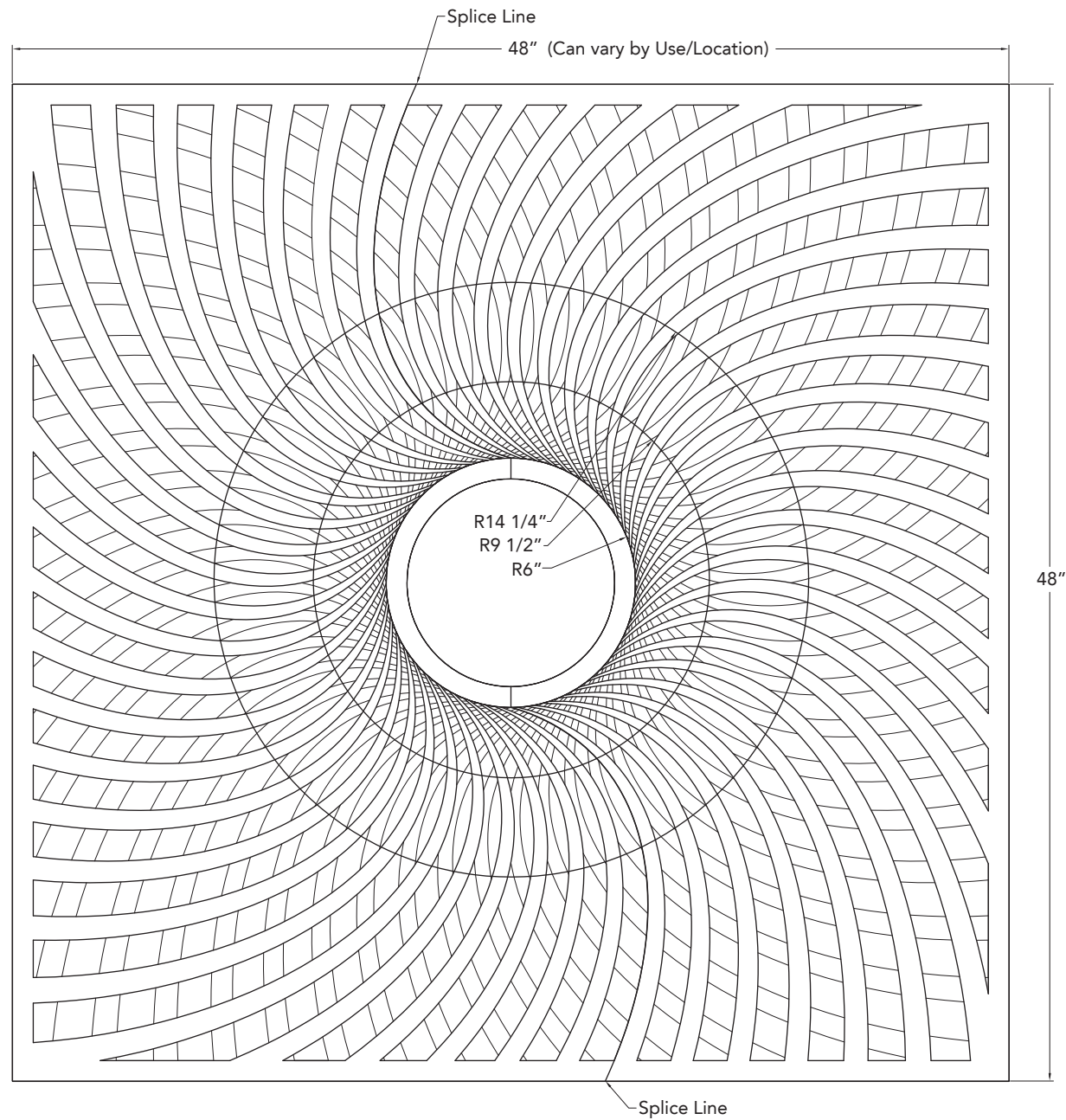
- NOTES:**
1. All metal components are sandblasted, cleaned, and finished with zinc epoxy primer and polyester powder coat.
 2. Fiberglass liner provided with black gloss gel coat finish.
 3. All dimensions nominal.
 4. Bottom- 1/2" Leveler bolt and jam nuts with non-marring pad.
 5. Custom sizes available upon request.

Tree Grate

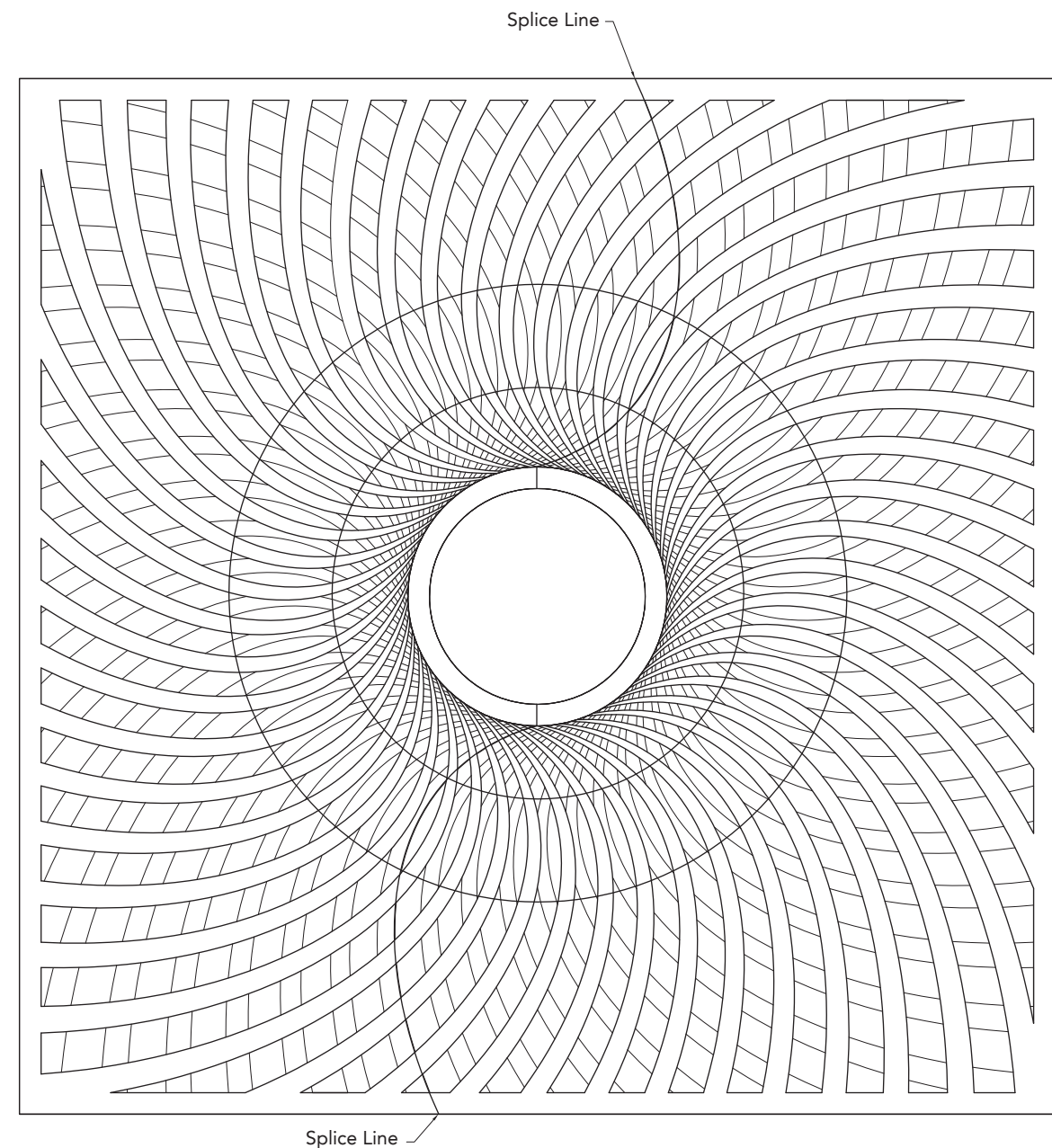
Tree Grate 1:
Manufacturer: Custom Design to match
Material: 1/2" plate steel, powdercoated
finish.

Base Color: RAL 6007





Top of Grate



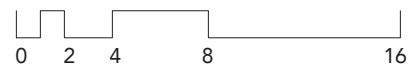
Bottom of Grate

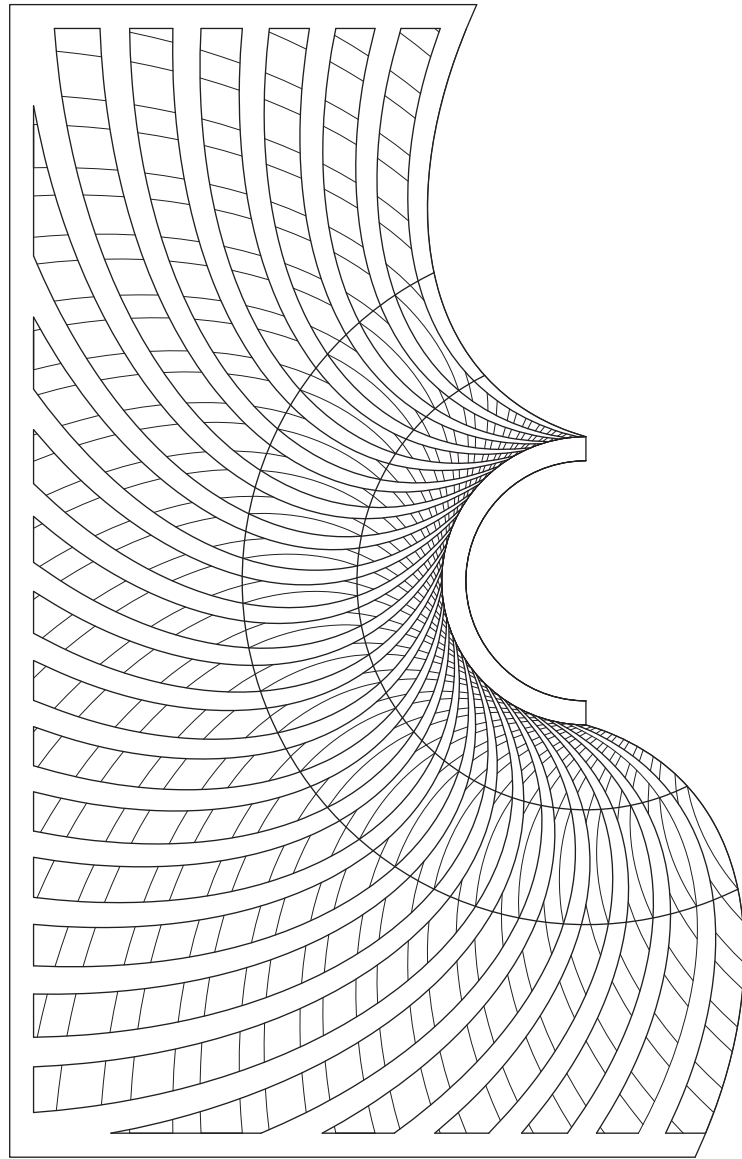
Grate to be milled from
solid stock, 1/2" thick

Powdercoated Finish

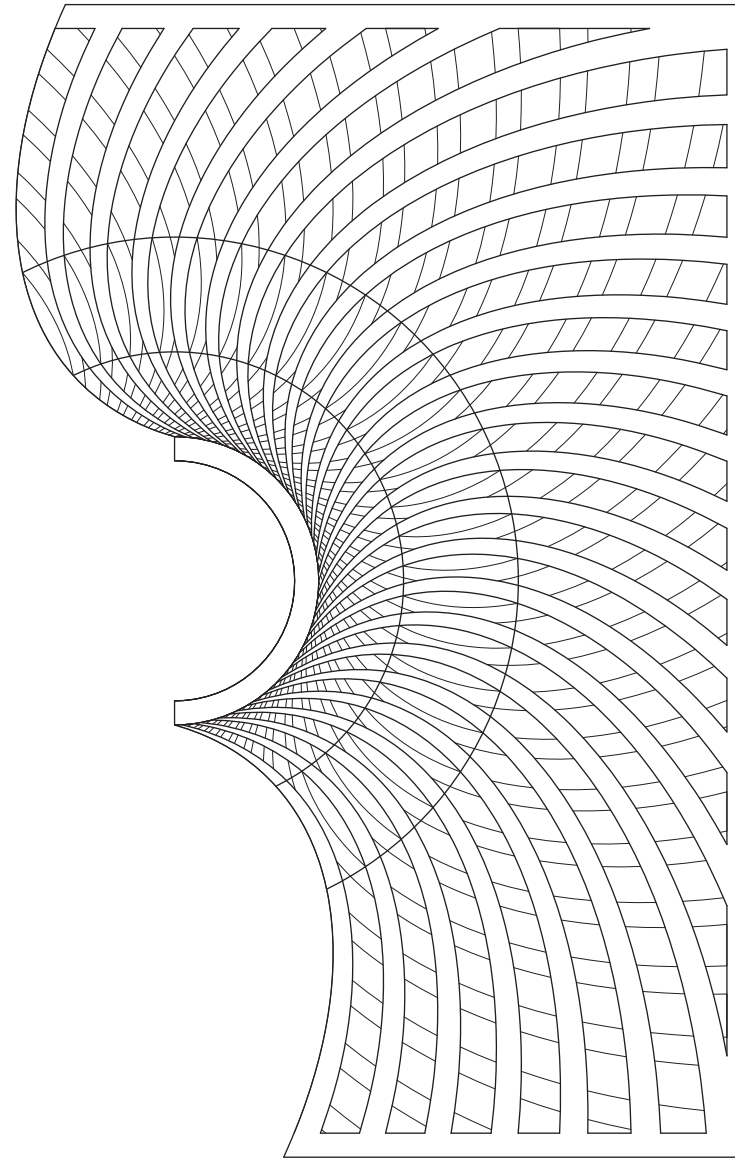
Rings to be inset and
removable

Tree Grate Plan





Part A



Part B

Tree Grate Split



Tree Grate Frame

Tree Grate Frame Base Option:
Manufacturer: Urban Accessories
Model # "A" or "S" or "P" as shown,
depending on adjacent surface and sidewalk
construction.
Material: Stainless steel 304L
Size: TBD - 4' square to be standard unless
situational needs dictate another size.

Base Color: Milled finish

