

# E. Roxboro Road

## NORTH DRUID HILLS ROAD CORRIDOR STUDY

### PRELIMINARY RECOMMENDATIONS: KEY INTERSECTION IMPROVEMENTS

First Public Open House - January 14 & 16, 2019

#### DESCRIPTION OF RECOMMENDATIONS

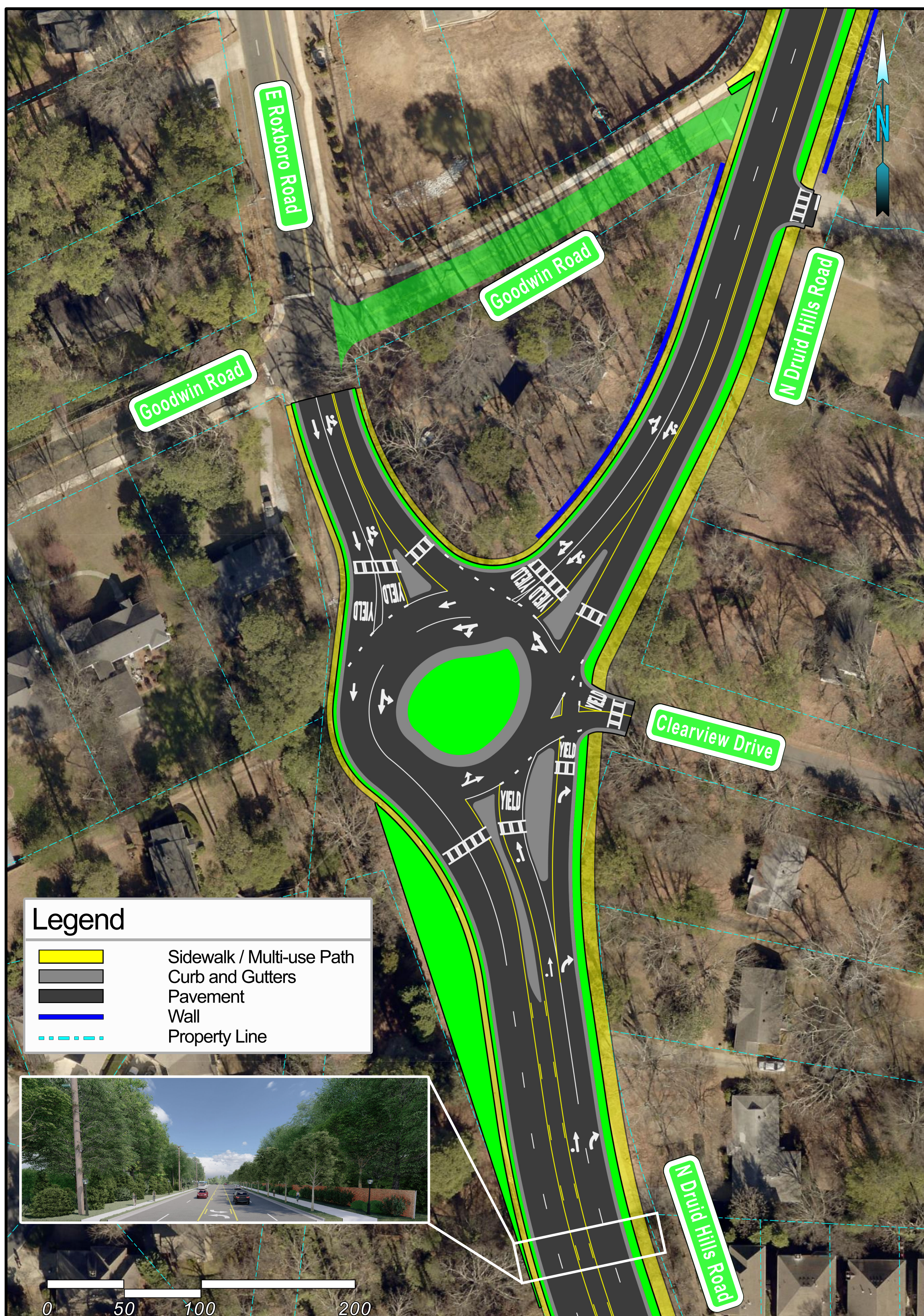
- Remove existing traffic signal at E Roxboro Rd and N Druid Hills Rd
- Convert the existing intersection to a three-legged roundabout with a central landscaped island
- Construct appropriate pedestrian and streetscape improvements based upon recommended typical cross-sections
- Improve pedestrian facilities, including new curb ramps and crosswalks

#### POTENTIAL BENEFITS

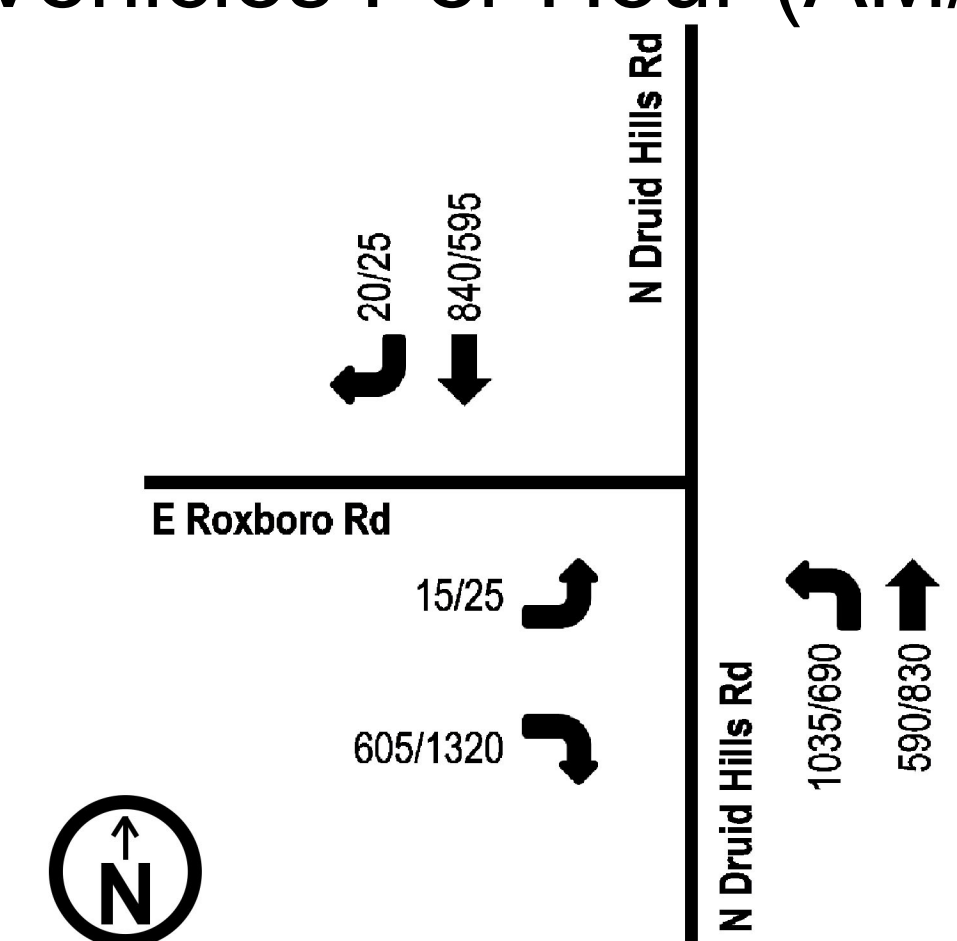
- Create a visual cue for traffic coming from SR 13/Buford Hwy that N Druid Hills Rd is a multimodal, community-oriented corridor
- Improve safety, capacity and operations
- Improve safety for people walking, biking, and using transit
- Improve access to public transportation and key destinations

#### POTENTIAL IMPACTS

- Would require additional right-of-way from the parcel north of the intersection between E Roxboro Rd and N Druid Hills Rd
- Would require the removal of a few trees
- May require short retaining walls along the east and west sides of N Druid Hills Rd
- Would require relocating property access driveways



#### TRAFFIC VOLUMES (2045) Vehicles Per Hour (AM/PM)



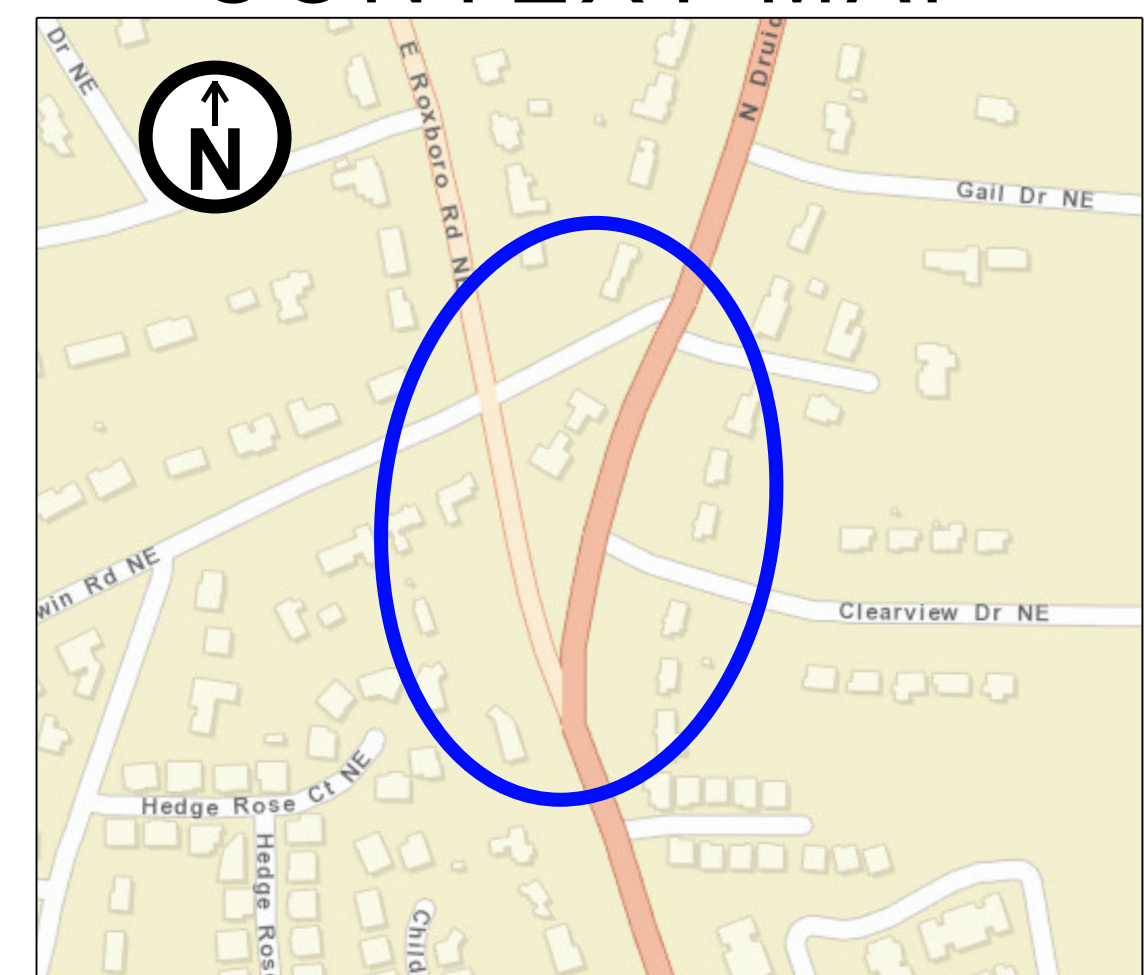
Note: Arrows represent vehicle movements, not lane configuration.

#### CAPACITY ANALYSIS

Level of Service (LOS)	2045 No-Build		2045 Build	
	AM	PM	AM	PM
Level of Service (LOS)	C	B	A	A
Delay (seconds)	25.0	17.2	8.8	3.3

Level of service (LOS) is an indicator of the degree of service on a roadway based on operational characteristics. It is measured on a scale of A (free flowing) to F (congested).

#### CONTEXT MAP



This image is a conceptual representation of how the preliminary intersection improvement recommendations may look in the future. Precise design and specific details will be worked out during the design phase of the project(s).