



**DATE: February 7, 2020**

**TO: All Bidders**

**FROM: City of Brookhaven Purchasing Department**

**RE: ITB No. 20-102, Blackburn Park Parking Lot Improvements**

Please see Addendum No. 2 for the above-referenced solicitation.



1. The following change has been made to the above-referenced solicitation.

**Add: Clarifications**

**Add: Questions and Answers**

**Delete: Pages 57-60**

**Add: Revised Pages 57-60**

**Add: Attachments**

2. All other terms and conditions remain the same.

**ADDENDUM NO. 2**  
**ITB NO. 20-102**  
**BLACKBURN PARK PARKING LOT IMPROVEMENTS**

Clarifications:

1. The location of 4 trees to be removed as CIBS Item 3.E **Pine Tree Removal** are shown on an attached plan.
2. Allowance Quantity Items included in the Construction Items Bid Schedule (CIBS) are for work beyond that shown on the plans. The quantities for each item may be used beyond that included in the plans as needed. The Allowance quantity may be increased as needed at the established unit price. Allowance quantities not used in execution of the work will be deducted from the contract at close-out.

The unit price for Allowance Items included in the CIBS Item 14, shall include removal of existing material beyond that required in the plans as directed and replacement with the directed allowance material. The unit price shall include excavation to required grade, hauling and disposal of excavated material off-site, and cost of providing and placing replacement material.

3. The City will have events in the Park throughout the contract period on **weekends**. Per General Conditions 3. Work Hours, no work can be performed on weekends without prior written permission.
4. The City has events planned in the Park on **weekdays** Wednesday, April 15, 2020, and Friday, May 8, 2020. No work can be performed in the Park on these two dates. Access must be provided to all areas of the park. Blocked off parking areas must be requested and approved beforehand for those two dates.
5. The City will allow the contractor to **park equipment overnight and stage material** in the small paved parking lot at the intersection of Ashford Dunwoody Rd and Johnson Ferry Rd. Permission must be requested and granted to leave equipment and material elsewhere overnight within the park.
6. Revised detail 7/SD5 is attached. The final height of exposed curb was corrected to 6".
7. Wheel stops have been added to the CIBS. See Item 16. They will only be added to the park side of the south entrance parking lot. See attached Concrete Wheel Stop detail. (add 16, ea to the CIBS)

**ADDENDUM NO. 2**  
**ITB NO. 20-102**  
**BLACKBURN PARK PARKING LOT IMPROVEMENTS**

A. The following are questions received and City of Brookhaven responses for the above-referenced solicitation:

1. Where and what will be the water source for the temporary **irrigation** system?  
**Water and power for a temporary controller are available on the far side of the soccer field. The below plan shows approximate location of the existing controller.**



**ADDENDUM NO. 2**  
**REVISED 2/7/2020 PAGE 57-60**  
**BID SCHEDULE**  
**ITB NO. 20-102, BLACKBURN PARK PARKING LOT IMPROVEMENTS**

# BLACKBURN PARK PARKING LOT IMPROVEMENTS

## Section 00-350 CONSTRUCTION ITEMS BID SCHEDULE

12/5/2019

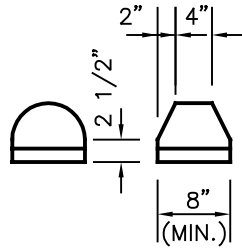
#	ITEM	QTY*	UNIT	UNIT Costs	Total Costs	Details & Notes
1	Mobilization	1	job			See Specifications
	A. Traffic Control and Phasing Process	1	job			
2	Staking site layout	1	job			
3	Clearing & Demolition					See Specifications
	A. Area of Manual Pavement Removal Only	1	ls			See Sheet D-1
	B. Tree Removal at Bioretention Pond	2	ea			
	C. Existing 6' Sidewalk/Trail at Bioretention Pond	480	sf			
	D. Cherry Tree Removal (Preserve for Transplant)	3	ea			
	E. Pine Tree Removal	4	ea			
	F. Sidewalk Removal	1	Job			
	G. Non-Granite Curb Removal	1	Job			
	H. Concrete Sidewalk Ramps Removed	1	Job			
	I. 6' Chain-link Fence at Soccer Fields Removed	200	lf			
	J. Existing Steps at Soccer Field Removed	1	job			
	K. Existing Steps at Tennis Center Removed	1	job			
	L. 10' Concrete sidewalk at retention pond	960	sf			
	M Asphalt Flume	1,200	sf			
	N Remove general items & plants in construction area	1	job			See Specifications
4	Grading & Drainage					See Sheet G-1
	A. Grading	1	job			
	B. Backfill (Curbs)	225	cy			
	C. Drainage					See sheet U-1
	1) Catch Basin	3	ea			See sheet SD1
	2) Junction Box	1	ea			See sheet SD1
	3) Headwall	2	ea			See sheet SD1
	4) 18" RCP Pipe	245	lf			See sheet SD1
	5) 24" RCP Pipe	40	lf			See sheet SD1
	6) Rip-rap	6	cy			See Sheet ED2

5	Erosion Control				See sheets ER-1-3 & ED 1-4
	A. Initial Phase	0.49	ac		
	B. Intermediate Phase	0.98	ac		
	C. Final Phase	0.78	ac		
	D. NPDES Monitoring	1	job		
6	Concrete				
	A. Sidewalk	7,000	sf		See Detail 4/SD5
	B. Steps	1	ea		See Detail 12/SD5
	C. Handrail	1	ea		See Detail 12/SD5
	D. Class-B Widening	1	job		
7	Fencing				
	A. New 6' black chain link	280	lf		See Detail 2/SD5
	B. 10 ft wide double swing chain link gate	1	ea		
	C. 5 ft wide chain link gate	1	ea		
	D. Temporary Reset of 6' Fence Along Soccer Field	1	job		
8	Roadway				
	A. 1.5" Asphalt Paving Overlay	108,870	sf		See detail 5/SD5
	B. Full Depth Asphalt Paving	8,610	sf		See detail 6/SD5
	C. Asphalt Roll Curb	267	lf		See detail 6/SD5
	D. New granite curb installation	1,280	lf		See Detail 7 & 13/SD5
	E. Reset existing old granite curb	2,800	lf		See Detail 7 & 13/SD5
	F. <b>Paint Striping per GDOT Specifications</b>				
	1 Stop Bar (White)	2	ea		See Specifications
	2 Parking Spaces & Islands (4" White)	6,445	lf		
	3 Painted Crosswalks	2	ea		See Detail 10/SD5
	4 Painted Handicap Symbols	8	ea		See Detail 11/SD5
	5 Painted EV Spaces	4	ea		
	G. Asphalt Patch	400	sf		See Detail 1/SD1
	H. Asphalt speed hump (full width)	3	ea		See Detail 14 /SD5
	I. New Curved Granite Curb	24	ea		See Detail 1/SD1
	J. Asphalt milling	76,870	sf		See Specifications
9	Site Furnishings				

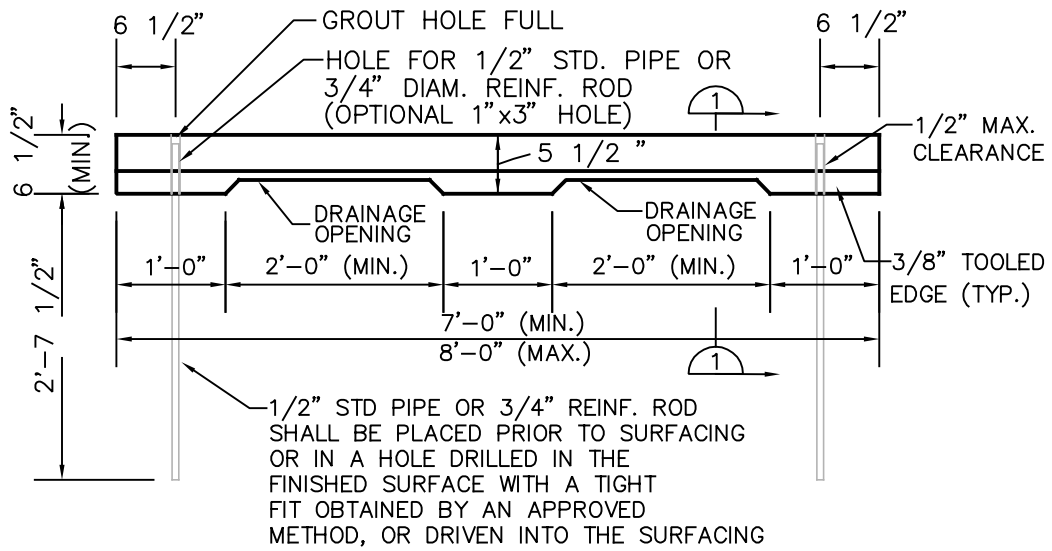
	A. Bench		1	ea			See Detail 8/SD5
10	Utilities						
	A. Adjusting storm inlet and sewer manhole tops		1	ls			See Sheet U1
	B. Relocate light pole		NIC				By Georgia Power
11	Site Signage						
	A. HC		4	ea			See Detail 9/SD5
12	Landscaping						
	A. Plant List						See sheets LS1-4 for Plant list
	1 Trees		14	ea			
	2 Shrubs		35	ea			
	3 Ground Cover		1,167	ea			
	4 Sod		10,200	sf			
	5 Hardwood Mulch		226	cy			
	B. Tree care						See Appendix & Sheet TPR-1
	1 Tree #1		1	job			
	2 Tree #2 -50" Oak		1	job			
	3 Tree #3		1	job			
	4 Tree #4		1	job			
	5 Tree Group #1		1	job			
	6 Tree Group #2		1	job			
	7 Relocated 3 Cherry Trees from Bioretention Area		1	job			
	C. Temp irrigation/watering to maintain warranty		1	job			
13	Clean Up						See Technical Specifications
	A. Pressure wash new and old installed granite curb		2,800	lf			
	B. Remove construction debris & clean site		1	job			See Specifications
14	Allowance Quantity Items		ALLOW				See Bid Documents
	Excavation and removal of Unsatisfactory soils and						See Technical Specifications
	A Replace with earth fill material		200	cy			
	B Replace with surge stone		200	cy			
	C Replace with GAB		200	cy			
	D Replace with #57 stone		200	cy			



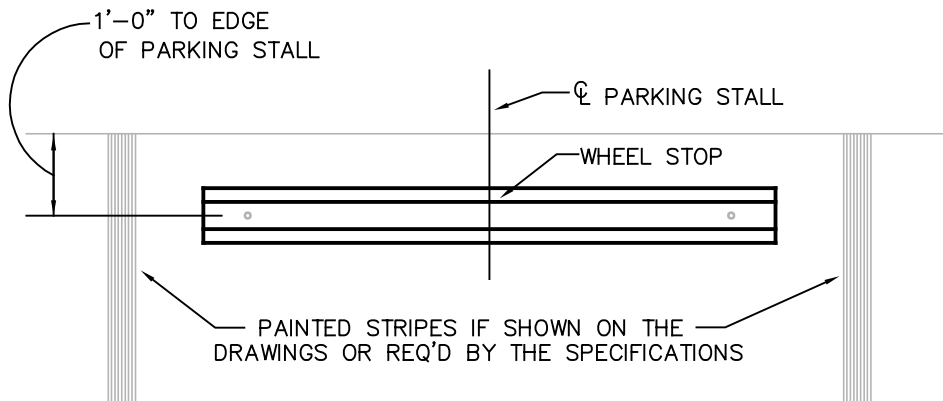
15	Allowance Quantity Items		ALLOW			
	A	Concrete header curb	100	lf		
	B	9.5mm asphalt mix to patch or level	150	tons		
	C	12.5mm asphalt mix to patch or level	150	tons		
	D	Full depth asphalt paving	200	Sq yds		
	E	Class B widening	16	cy		Replace old curb that breaks
	F	New granite curb to replace broken curb	400	lf		to be used when necessary
	G	Additional Silt Fence	200	lf		
						See Specifications
16	Other unlisted Items as identified by the bidder					
	A	Wheel Stop	16	ea		
	B					
	C					
	<b>Sub-total of Construction Items</b>			%		Percent of Subtotal
17	General Conditions, Overhead and Fee					
						Transfer Total to Bid Form
	<b>TOTAL LUMP SUM BID</b>					
	<b>Note:</b>					
	<i>Quantities and formulas are given only as a convenience to the contractor to help explain the project.</i>					
	<i>Landscape Architect assumes no liability for the quantities and instructs the contractor</i>					
	<i>to take his own quantities as verification. Contractor must bid the project to complete what</i>					
	<i>is shown on the Construction Drawings. Drawings take precedent over the Bid List Quantities.</i>					



END VIEWS

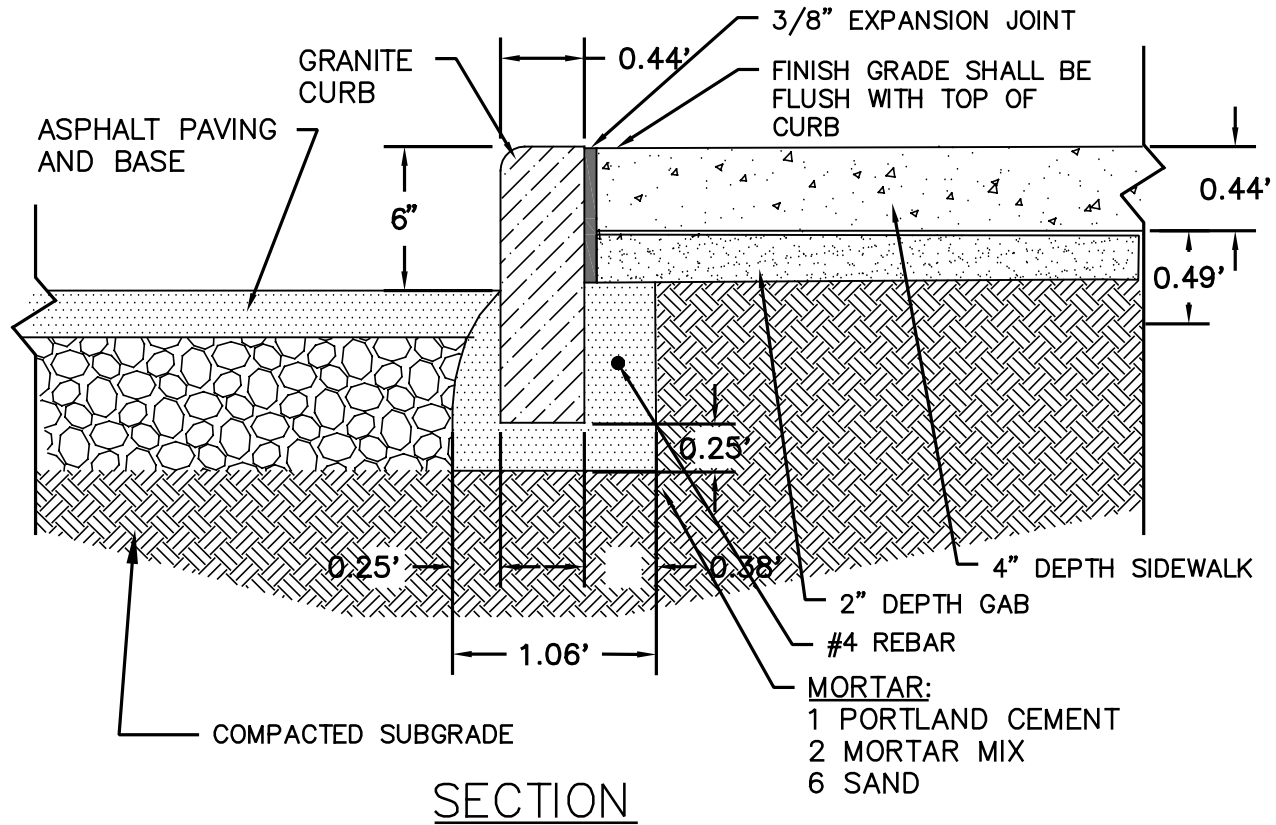


ELEVATION



INSTALLATION PLAN

CONCRETE WHEEL  
STOP  
NTS



7

GRANITE CURB - RESET AND NEW

NTS

