

GENERAL NOTES

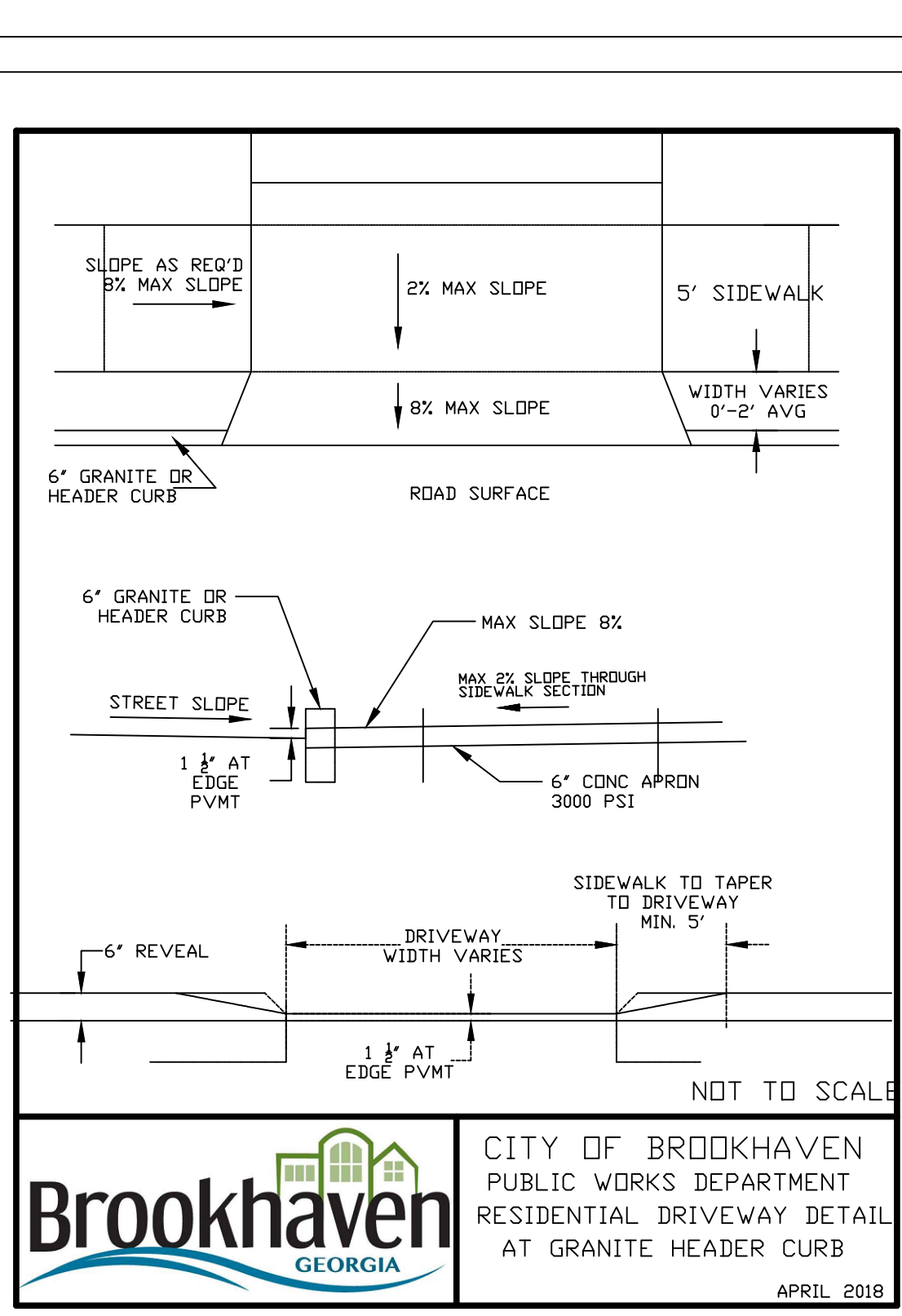
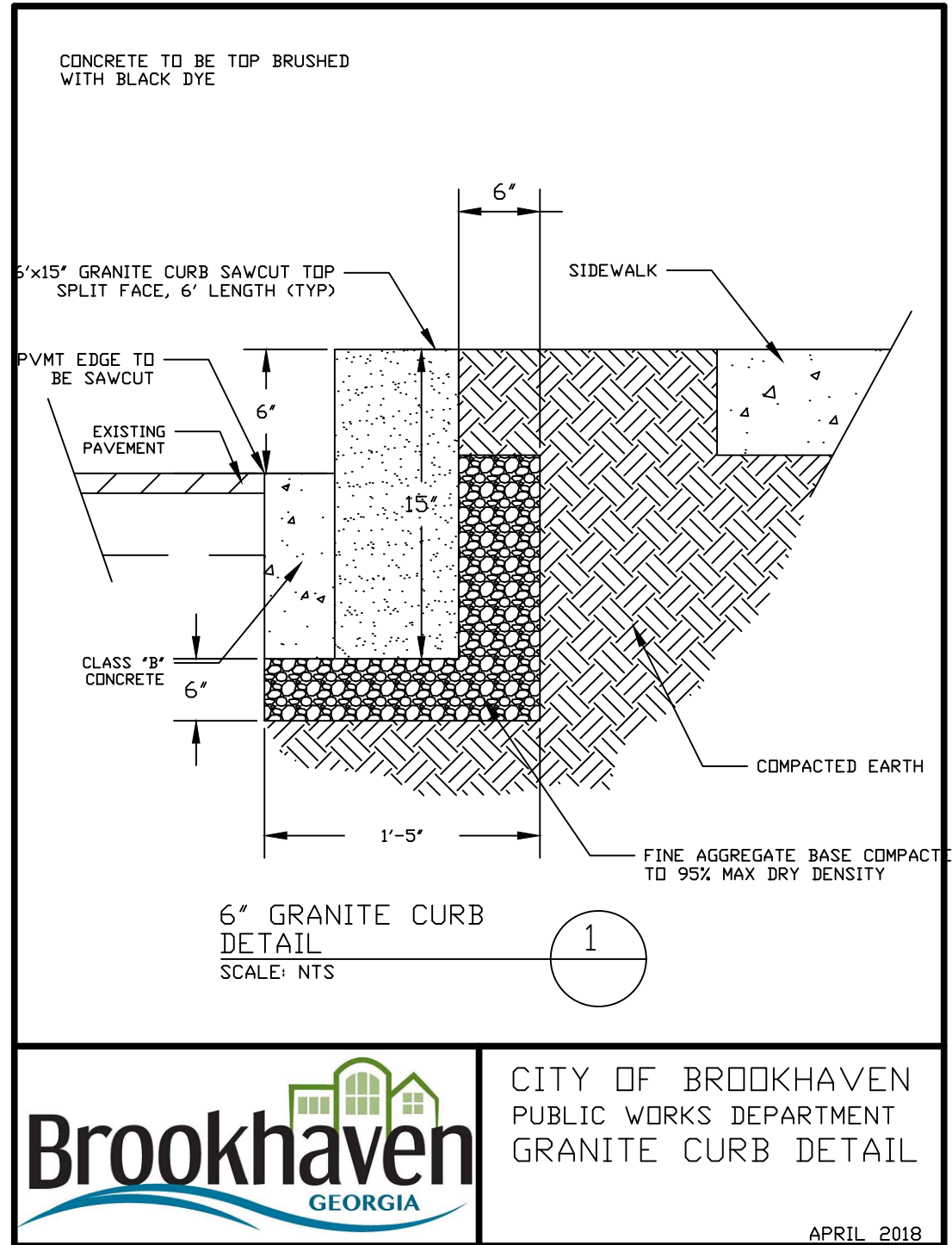
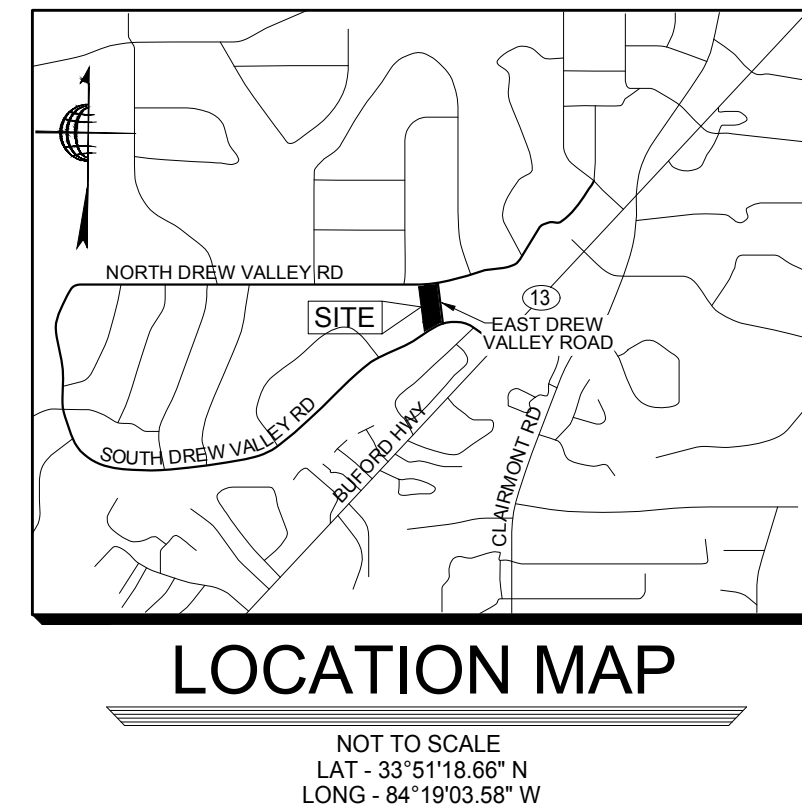
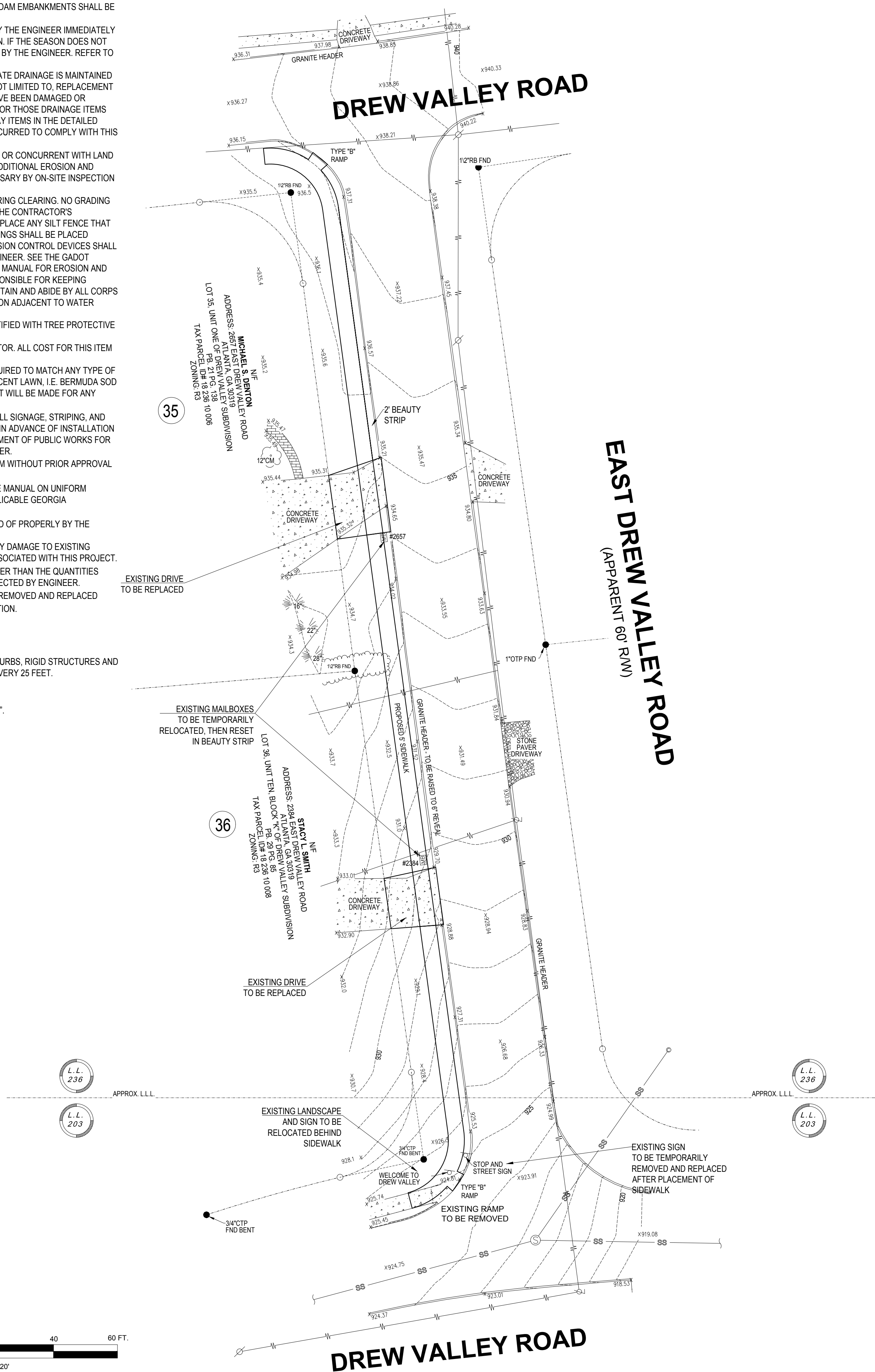
- ALL WORK SHALL BE DONE IN ACCORDANCE WITH THE GEORGIA DEPARTMENT OF TRANSPORTATION STANDARD AND SUPPLEMENTAL SPECIFICATIONS, CURRENT EDITION AND/OR CITY OF BROOKHAVEN SPECIFICATIONS AND DETAILS.
- A NOTICE OF INTENT IS NOT REQUIRED ON THIS PROJECT. THIS PROJECT HAS A TOTAL AREA OF 0.12 ACRES AND THE EXPECTED DISTURBED AREA IS 0.12 ACRES. THE TOTAL AREA IS THE AREA OF RIGHT-OF-WAY AND EASEMENTS, AND THE DISTURBED AREA IS THE CLEARING AND GRUBBING AREA.
- ALL KNOWN UTILITY FACILITIES ARE SHOWN SCHEMATICALLY ON THE PLANS AND ARE NOT NECESSARILY ACCURATE IN LOCATION AS TO PLAN OR ELEVATION. UTILITY FACILITIES SUCH AS SERVICE LINES OR UNKNOWN FACILITIES NOT SHOWN ON PLANS WILL NOT RELIEVE THE CONTRACTOR OF HIS RESPONSIBILITY UNDER THIS REQUIREMENT. 'EXISTING UTILITY FACILITIES' MEANS ANY UTILITY THAT EXISTS ON THE PROJECT IN ITS ORIGINAL, RELOCATED, OR NEWLY INSTALLED POSITION. ALL UTILITY FACILITIES, WHICH ARE IN CONFLICT WITH CONSTRUCTION AND ARE NOT COVERED AS SPECIFIC ITEMS IN THE DETAILED ESTIMATE, ARE TO BE REMOVED OR RELOCATED TO CLEAR CONSTRUCTION IN ADVANCE OF THIS WORK.
- UTILITY WORK COORDINATION WILL BE REQUIRED AS PART OF THIS CONTRACT. THE CONTRACTOR WILL BE REQUIRED TO USE THE ON-CALL CENTER TELEPHONE NUMBER, 811 OR 1-800-282-7411, FOR THE PURPOSE OF COORDINATING THE MARKING OF UNDERGROUND UTILITIES. THE CONTRACTOR'S ATTENTION IS CALLED TO SUB-SECTION 105.06 OF THE GADOT STANDARDS SPECIFICATIONS "COOPERATION WITH UTILITIES."
- THE FOLLOWING UTILITIES MAY HAVE FACILITIES IN THE PROJECT AREA:
 - ATLANTA GAS LIGHT CO.
 - GEORGIA POWER
 - ATT
 - GOOGLE FIBER
 - COMCAST COMMUNICATIONS
 - ZAYO FIBER
 - DEKALB COUNTY WATER & SEWER
- THE CONTRACTOR SHALL STRICTLY ADHERE TO DUST CONTROL REGULATIONS. ALL AREAS SUBJECTED TO DUST FORMATION MUST BE PERIODICALLY WATERED. ALL COSTS FOR DUST CONTROL SHALL BE INCLUDED IN PRICE BID FOR ENTIRE PROJECT-LUMP SUM.
- THE TOTAL AREA SHOWN ON THE PLANS FOR GRASSING IS FOR INFORMATION ONLY. THE CITY OF BROOKHAVEN ASSUMES NO RESPONSIBILITY FOR ITS ACCURACY. THE CONTRACTOR SHALL BID ON GRASSING COMPLETE LUMP SUM AND IT SHALL BE HIS RESPONSIBILITY TO DETERMINE THE ACTUAL AREA TO BE GRASSED. NO CLAIMS WILL BE CONSIDERED FOR COMPENSATION IF THE CONTRACTOR RELIES ON THE AREA SHOWN ON THE PLANS.
- INGRESS AND EGRESS SHALL BE MAINTAINED AT ALL TIMES TO ADJACENT PROPERTIES. REFER TO SUB-SECTION 107.07 OF THE GADOT STANDARD SPECIFICATIONS.
- IT SHALL BE THE CONTRACTOR'S RESPONSIBILITY TO FURNISH SUITABLE BORROW MATERIAL FOR THE PROJECT AND DISPOSE OF ANY UNSUITABLE OR WASTE MATERIAL.
- HORIZONTAL CONTROL IS BASED UPON GEORGIA STATE PLANE COORDINATE SYSTEM. SEE PLANS FOR LOCATIONS AND DESCRIPTIONS OF MONUMENTS USED.
- WHERE WET SUBGRADE IS ENCOUNTERED AND WHERE IDENTIFIED BY THE ENGINEER, UNDER RAIN PIPE WITH DRAINAGE AGGREGATE SHALL BE PLACED AS DIRECTED BY THE ENGINEER TO AID IN DEWATERING THE SUBGRADE.
- AGGREGATE SURFACE COURSE FOR TEMPORARY DRIVEWAYS, INCLUDING MATERIAL, HAUL AND PLACEMENT SHALL BE USED AT THE ENGINEER'S DIRECTION TO FACILITATE THE MOVEMENT OF LOCAL TRAFFIC THROUGH THE CONSTRUCTION AREA DURING INCLEMENT WEATHER. WHEN USED FOR THIS PURPOSE, SECTION 318 OF THE GADOT STANDARDS SPECIFICATIONS IS MODIFIED TO PERMIT TRUCK DUMPING ON UNPREPARED WET, MUDDY SUBGRADE. SECTION 318 IS FURTHER MODIFIED TO PERMIT THE USE OF CRUSHER STONE AS DESCRIBED IN SECTION 318.02. THE CONTRACTOR WILL HAVE THE USE OF THE FOLLOWING MATERIALS:
 - GRADED AGGREGATE, ARTICLE 815.2.01
 - COURSE AGGREGATE, SIZE 467, ARTICLE 800.2.01
 - STABILIZED AGGREGATE, TYPE 1 OR 11, SECTION 803.2.61 OR 803.2.02
 - CRUSHED STONE, ARTICLE 806.2.01
- ALL DRIVEWAYS WHERE ACCESS IS ALLOWED SHALL BE PLACED AS DIRECTED BY THE ENGINEER IN ACCORDANCE WITH RULES AND REGULATIONS FOR CONTROL AND PROTECTION OF RIGHTS-OF-WAY. ALL DRIVEWAYS THAT ARE TO BE RECONSTRUCTED SHALL BE REPLACED IN KIND, I.E. ASPHALT FOR ASPHALT, CONCRETE FOR CONCRETE, AND CONCRETE FOR EARTH. THE DRIVEWAY LOCATION INDICATED ON THE PLANS IS TO MATCH THE ACTUAL FIELD LOCATION OF EXISTING DRIVEWAYS WHERE THEY ARE NOT IN CONFLICT WITH THE RULES AND REGULATIONS. THE CONTRACTOR SHALL OBTAIN THE APPROVAL OF THE ENGINEER PRIOR TO MAKING ANY REVISIONS SUCH AS LOCATION, WIDTH, AND/OR NUMBER OF DRIVES TO BE CONSTRUCTED. ASPHALTIC AND UNPAVED DRIVES SHALL BE PAVED TO THEIR CONSTRUCTION LIMITS. WHERE REQUIRED, THE DRIVES SHALL BE PAVED AS FOLLOWS:

RESIDENTIAL CONCRETE DRIVES:	RESIDENTIAL ASPHALT DRIVES:
6" DRIVEWAY CONCRETE	1-1/2" ASPH. CONC. 12.5 MM SUPERPAVE, 165 LB/5Y
6" CONCRETE VALLEY GUTTER	6" GRADED AGGREGATE BASE
COMMERCIAL CONCRETE DRIVES:	COMMERCIAL ASPHALT DRIVES:
8" DRIVEWAY CONCRETE	1-1/2" ASPH. CONC. 12.5 MM SUPERPAVE, 165 LB/5Y
8" CONCRETE VALLEY GUTTER	2" ASPH. CONC. 19 MM SUPERPAVE, 220 LB/5Y
	6" GRADED AGGREGATE BASE
- THE CONTRACTOR SHALL OBSERVE ALL APPLICABLE LOCAL, STATE, AND FEDERAL SAFETY REGULATIONS REGARDING PIPE INSTALLATION IN TRENCHES. NO SEPARATE PAYMENT WILL BE MADE FOR ANY COST INCURRED TO COMPLY WITH THE REQUIREMENT.
- ALL EXISTING PIPE SHALL REMAIN UNLESS OTHERWISE NOTED ON PLANS OR AS DIRECTED BY THE ENGINEER. COST FOR REMOVAL SHALL BE INCLUDED IN THE PRICE BID FOR GRADING COMPLETE-LUMP SUM.
- AT LOCATIONS WHERE NEW PAVEMENT IS TO BE REPLACED ADJACENT TO EXISTING PAVEMENT WITHOUT AN OVERLAY OR WHERE CURBING IS TO BE PLACED ACROSS A PAVED AREA, A JOINT SHALL BE SAWS ON A LINE ESTABLISHED BY THE ENGINEER TO ENSURE PAVEMENT REMOVAL TO A NEAT LINE. THE COST FOR SAWS JOINTS, WHEN REQUIRED, SHALL BE INCLUDED IN PRICE BID FOR OTHER CONTRACT ITEMS, EXCEPT WHEN SAWING P.C.C. CONCRETE PAVEMENT.
- ALL AREAS WHERE THERE ARE EXISTING CATCH BASINS OR DRAINAGE INLETS WHERE THE SIDEWALK IS TO BE CONSTRUCTED, THE SIDEWALK SLOPE SHALL BE ADJUSTED TO TIE IN SMOOTHLY WITH THE EXISTING DRAINAGE STRUCTURES.
- WHERE EXISTING PAVEMENT MARKINGS AND LINES ARE IN CONFLICT WITH THE TRAFFIC PATTERN BEING USED ON CONSTRUCTION, THE CONTRACTOR SHALL REMOVE OR OVERLAY LINES TO THE SATISFACTION OF THE ENGINEER SUCH THAT THE LINES DO NOT CONFUSE THE TRAVELING PUBLIC. ALL REMAINING LINES OR MARKINGS SHALL BE IN ACCORDANCE WITH THE MANUAL ON UNIFORM TRAFFIC CONTROL DEVICES, LATEST EDITION, OR AS DIRECTED BY THE ENGINEER. TRAFFIC SHALL NOT BE ALLOWED ON ANY PAVEMENT NOT PROPERLY STRIPED. WHEN NECESSARY, EXISTING STRIPING SHALL BE REMOVED BY GRINDING, UNLESS SPECIFIED BY THE BROOKHAVEN TRAFFIC ENGINEER.
- THE CONTRACTOR'S ATTENTION IS DIRECTED TO ARTICLES 104.05 AND 107.07 OF THE GADOT STANDARD SPECIFICATIONS AND THE SPECIAL PROVISIONS FOR TRAFFIC CONTROL AND SEQUENCE OF OPERATIONS IN REGARD TO MAINTENANCE OF TRAFFIC DURING CONSTRUCTION.
- PRICE BID FOR TRAFFIC CONTROL - LUMP SUM SHALL INCLUDE, BUT IS NOT LIMITED TO CONSTRUCTION, MAINTENANCE, AND REMOVAL OF TEMPORARY SIGNAGE AND PAVEMENT MARKINGS, BARRICADES, CHANNELIZING DEVICES, ETC. REQUIRED FOR MAINTENANCE OF TRAFFIC DURING CONSTRUCTION. ALL TEMPORARY SIGNING AND PAVEMENT MARKING SHALL BE IN ACCORDANCE WITH THE MANUAL ON UNIFORM TRAFFIC CONTROL DEVICES LATEST EDITION AND/OR AS DIRECTED BY THE ENGINEER. TEMPORARY TRAFFIC CONTROL AND WARNING DEVICES SHALL BE PLACED PRIOR TO THE COMMENCEMENT OF ANY ROAD IMPROVEMENT WORK ON CITY ROADS AND SHALL REMAIN IN PLACE UNTIL THE CONCLUSION OF ALL SIGNAGE AND STRIPING WORK. ALL FINAL SIGNAGE MUST BE INSTALLED CONCURRENTLY WITH THE PERFORMANCE OF THE STRIPING WORK.
- STRIPING (WHITE AND YELLOW) AND ARROW MARKINGS SHALL BE APPLIED USING GDOT STANDARDS FOR THERMOPLASTIC STRIPING.
- CONTACT THE BROOKHAVEN TRAFFIC ENGINEER 404-637-0540 ONE WEEK PRIOR TO COMMENCEMENT OF ANY STRIPING WORK.

- MAXIMUM SLOPE FOR CUT OR FILL IS 2H: 1V EXCEPT EARTHEN DAM EMBANKMENTS SHALL BE 3H: 1V.
- ALL CUT AND FILL SLOPES SHALL BE GRASSED AS DIRECTED BY THE ENGINEER IMMEDIATELY AFTER THE SLOPES ARE ESTABLISHED IN ORDER TO REDUCE EROSION. IF THE SEASON DOES NOT PERMIT GRASSING, TEMPORARY MULCH SHALL BE USED AS DIRECTED BY THE ENGINEER. REFER TO SECTION 161 OF THE STANDARD SPECIFICATIONS.
- THE CONTRACTOR SHALL ENSURE THAT POSITIVE AND ADEQUATE DRAINAGE IS MAINTAINED AT ALL TIMES WITHIN THE PROJECT LIMITS. THIS MAY INCLUDE, BUT NOT LIMITED TO, REPLACEMENT OR RECONSTRUCTION OF EXISTING DRAINAGE STRUCTURES THAT HAVE BEEN DAMAGED OR REMOVED OR REGRADING AS REQUIRED BY THE ENGINEER, EXCEPT FOR THOSE DRAINAGE ITEMS SHOWN AT SPECIFIC LOCATIONS IN THE PLANS AND HAVE SPECIFIC PAY ITEMS IN THE DETAILED ESTIMATE. NO SEPARATE PAYMENT WILL BE MADE FOR ANY COSTS INCURRED TO COMPLY WITH THIS REQUIREMENT.
- EROSION CONTROL MEASURES SHALL BE INSTALLED PRIOR TO OR CONCURRENT WITH LAND DISTURBANCE ACTIVITIES AND SHALL BE MAINTAINED AT ALL TIMES. ADDITIONAL EROSION AND SEDIMENT CONTROL DEVICES SHALL BE INSTALLED IF DEEMED NECESSARY BY ON-SITE INSPECTION OR AS DIRECTED BY THE ENGINEER.
- ALL SILT FENCES MUST BE PLACED AS ACCESS IS OBTAINED DURING CLEARING. NO GRADING SHALL BE DONE UNTIL SILT FENCE INSTALLATION IS COMPLETE. IT IS THE CONTRACTOR'S RESPONSIBILITY TO MAINTAIN ALL SILT FENCES AND TO REPAIR OR REPLACE ANY SILT FENCE THAT IS NOT SATISFACTORY. EROSION CONTROL CHECK DAMS OR FILTER RINGS SHALL BE PLACED IMMEDIATELY AFTER DRAINAGE STRUCTURES ARE IN PLACE. ALL EROSION CONTROL DEVICES SHALL BE PLACED ACCORDING TO THE PLANS AND AS DIRECTED BY THE ENGINEER. SEE THE GADOT STANDARD SPECIFICATIONS REGARDING EROSION CONTROL AND THE MANUAL FOR EROSION AND SEDIMENT CONTROL BY G.S.W.C.C. THE CONTRACTOR SHALL BE RESPONSIBLE FOR KEEPING WETLAND AREAS FREE FROM SILTATION. THE CONTRACTOR SHALL OBTAIN AND ABIDE BY ALL CORPS OF ENGINEERS RULES AND REGULATIONS CONCERNING CONSTRUCTION ADJACENT TO WATER AREAS AND MAINTAIN WATER QUALITY.
- ALL BUFFERS AND TREE SAVE AREAS ARE TO BE CLEARLY IDENTIFIED WITH TREE PROTECTIVE FENCING PRIOR TO COMMENCEMENT OF ANY LAND DISTURBANCE.
- CONSTRUCTION LAYOUT WILL BE REQUIRED BY THE CONTRACTOR. ALL COST FOR THIS ITEM WILL BE INCLUDED IN THE PRICE BID FOR OTHER CONTRACT ITEMS.
- TYPE OF GRASS OR SOD USED ON THIS PROJECT WILL BE REQUIRED TO MATCH ANY TYPE OF GRASS OR SOD WHICH MAY BE PLANTED AND GROWING ON THE ADJACENT LAWN, I.E. BERMUDA SOD FOR BERMUDA SOD, ZOYSIA FOR ZOYSIA, ETC. NO SEPARATE PAYMENT WILL BE MADE FOR ANY COST INCURRED TO COMPLY WITH THIS REQUIREMENT.
- THE CONTRACTOR WILL BE RESPONSIBLE FOR PRE-MARKING ALL SIGNAGE, STRIPING, AND HANDICAP RAMPS. AFTER PRE-MARKING IS COMPLETE AND 72 HOURS IN ADVANCE OF INSTALLATION THE CONTRACTOR SHALL NOTIFY THE CITY OF BROOKHAVEN DEPARTMENT OF PUBLIC WORKS FOR APPROVAL. THIS SHALL BE COORDINATED WITH THE PROJECT ENGINEER.
- NO LANE CLOSURES ARE ALLOWED BETWEEN 6-9 AM AND 4-7 PM WITHOUT PRIOR APPROVAL BY THE ENGINEER.
- ALL SIGNS AND PAVEMENT MARKINGS SHALL CONFORM TO THE MANUAL ON UNIFORM TRAFFIC CONTROL DEVICES, (MUTCD), LATEST EDITION, AND ANY APPLICABLE GEORGIA DEPARTMENT OF TRANSPORTATION STANDARDS.
- ALL DEBRIS AND WASTE FROM THE PROJECT WILL BE DISPOSED OF PROPERLY BY THE CONTRACTOR.
- THE CONTRACTOR SHALL BE RESPONSIBLE FOR REPAIRING ANY DAMAGE TO EXISTING IRRIGATION SYSTEMS WHICH OCCURS AS A RESULT OF ANY WORK ASSOCIATED WITH THIS PROJECT.
- ANY PAY ITEM QUANTITIES IN THE CONTRACT THAT ARE GREATER THAN THE QUANTITIES NECESSARY TO CONSTRUCT THE PROJECT SHALL BE UTILIZED AS DIRECTED BY ENGINEER.
- CONTRACTOR TO ENSURE ALL STREET SIGNS THAT ARE TO BE REMOVED AND REPLACED ARE STORED SAFELY AND SECURELY AND REPLACED IN GOOD CONDITION.

SIDEWALK CONSTRUCTION NOTES

- USE 3/8" X 4" EXPANSION JOINTS AT CHANGE OF DIRECTIONS, CURBS, RIGID STRUCTURES AND RIGID PAVEMENT. ON STRAIGHT RUNS PROVIDE EXPANSION JOINTS EVERY 25 FEET.
- TOOL ALL EXPOSED EDGES AND JOINTS TO 1/4" RADIUS
- BROOM FINISH PERPENDICULAR TO TRAVEL.
- PROVIDE 3/4" DEEP SAW CUT CONTRACTION JOINTS EVERY 5'-0".



CITY OF BROOKHAVEN

PUBLIC WORKS DEPARTMENT

Project No.	19-102	No.	Date
Survey/Check	#1		
Drawn By	#2		
Approved By	#3		
Date	#4		
Scale	#5		
	#6		
	#7		
	#8		
	#9		
	#10		
	#11		
	#12		
	#13		
	#14		
	#15		
	#16		
	#17		
	#18		
	#19		
	#20		
	#21		
	#22		
	#23		
	#24		
	#25		
	#26		
	#27		
	#28		
	#29		
	#30		
	#31		
	#32		
	#33		
	#34		
	#35		
	#36		
	#37		
	#38		
	#39		
	#40		
	#41		
	#42		
	#43		
	#44		
	#45		
	#46		
	#47		
	#48		
	#49		
	#50		

PROPOSED SIDEWALK PROJECT FOR EAST DREW VALLEY ROAD PROJECT WALK 19-102 LOCATED IN LAND LOTS 203 & 236, 18TH DISTRICT CITY OF BROOKHAVEN, DEKALB COUNTY, GEORGIA

SHEET NO. 1/1