



City of Brookhaven

2021-2025 Consolidated Plan and  
Impediments to Fair Housing Choice

# Contacts



Patricia Hansen  
Director of Strategic Partnerships  
[Patty.Hansen@BrookhavenGA.gov](mailto:Patty.Hansen@BrookhavenGA.gov)  
(404) 637-0722



Aaron Sorrell  
Community Planning Insights  
[Aaron.Sorrell@cpi-planning.com](mailto:Aaron.Sorrell@cpi-planning.com)  
(937) 331-8333



# Agenda



REVIEW HUD REQUIRED  
PLANS AND STUDIES



ELIGIBLE USES OF  
FUNDS



DISCUSS COMMUNITY  
NEEDS AND PRIORITIES



NEXT STEPS

# Meeting Purpose and Goals



Provide background on the HUD required plans and studies



Understand community needs



Discuss funding priorities  
(projects and activities)



# HUD Plans and Studies

## Analysis of Impediments to Fair Housing Choice (AI)

An AI is a review of current conditions, public and private sector policies, and activities that may impede individuals from obtaining suitable housing that meets their needs.

- The AI outlines those intentional or unintentional impediments, along with a set of recommendations and strategies communities can undertake to address the impediments.
- All jurisdictions receiving HUD funds are required to “Affirmatively Further Fair Housing.”
- This means those jurisdictions must actively undertake activities (of their choice) that increase access and availability of housing.





# HUD Required Plans and Studies

## **2021 – 2025 Consolidated Plan**

A comprehensive look at the housing, economic, and community development needs and priorities of a community and its neighborhoods.

- Outlines a strategic plan of goals and objectives to address the identified needs and priorities over a five-year period.
- Required to access CDBG funds.
- Approximately \$1.5 Million in federal funding over the five-year period.





# CDBG – Community Development Block Grant Program

Broad program designed to address a wide spectrum of community needs

Activities must meet one of three National Objectives:

1. Activity benefits low- and moderate-income person.
2. Prevention or elimination of slum and blight.
3. Addressing an urgent need.

Estimated annual award: \$375,000.00

Broad activity categories include:

Public Infrastructure

Economic Development

Parks and Recreation

Housing Rehabilitation

Public service programs

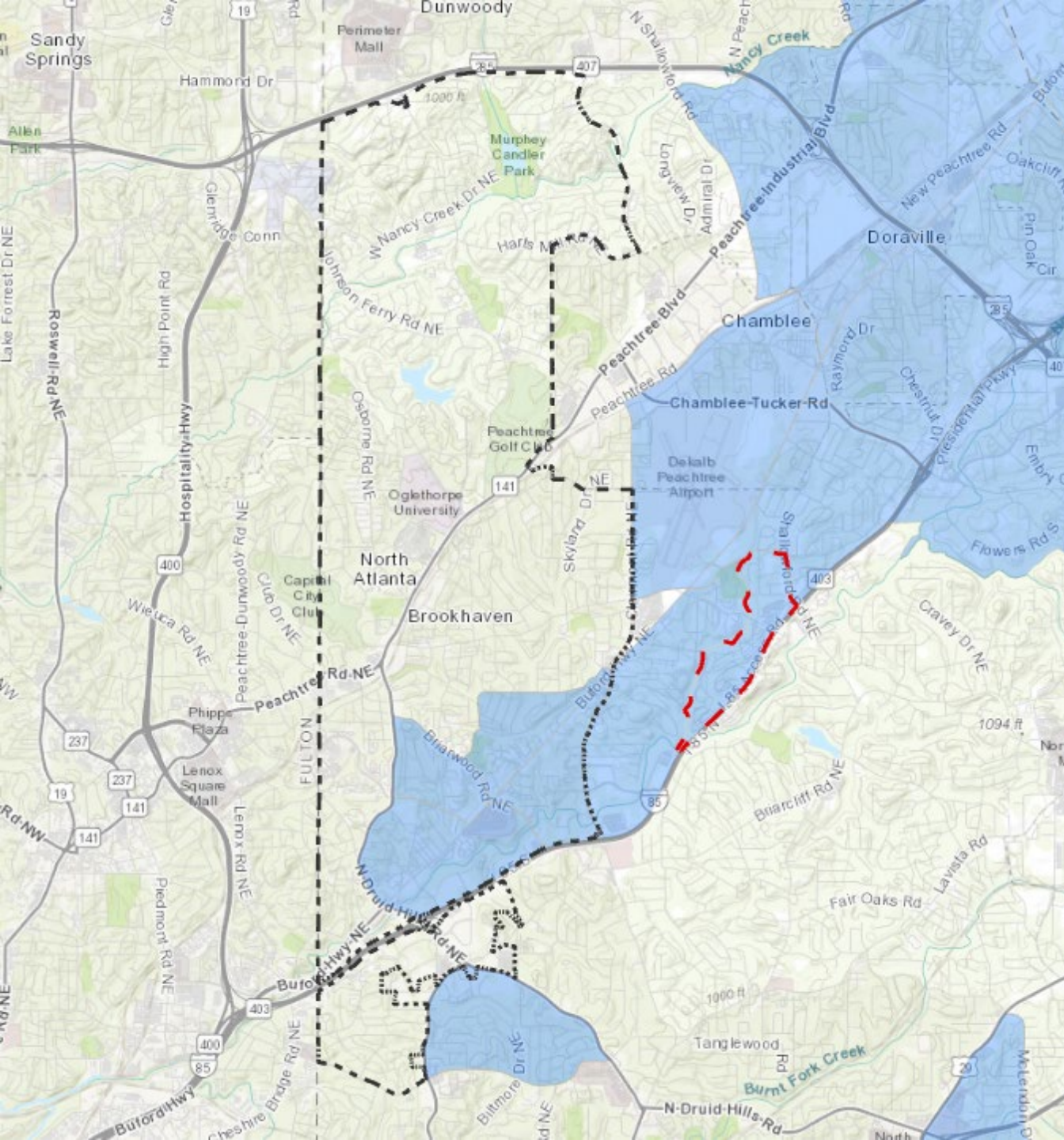
Blight removal



# Consolidated Planning Process







# Low- and Moderate-Income Census Tracts

Activities that directly benefit low-income individuals can occur anywhere

Activities that benefit neighborhoods are limited to LMI tracts

# Schedule





# Needs and Priorities Discussion

1. What do you believe are the greatest community development needs in the area? Where are these needs most acute?
2. What do you believe are the greatest fair and affordable housing needs in the area? Where is this housing most needed?
3. Do area residents of similar incomes generally have the same range of housing options?
4. Are there any barriers other than income/savings that might limit housing choices?
5. Are public resources (e.g. parks, schools, roads, police & fire services, etc.) invested evenly throughout all neighborhoods?