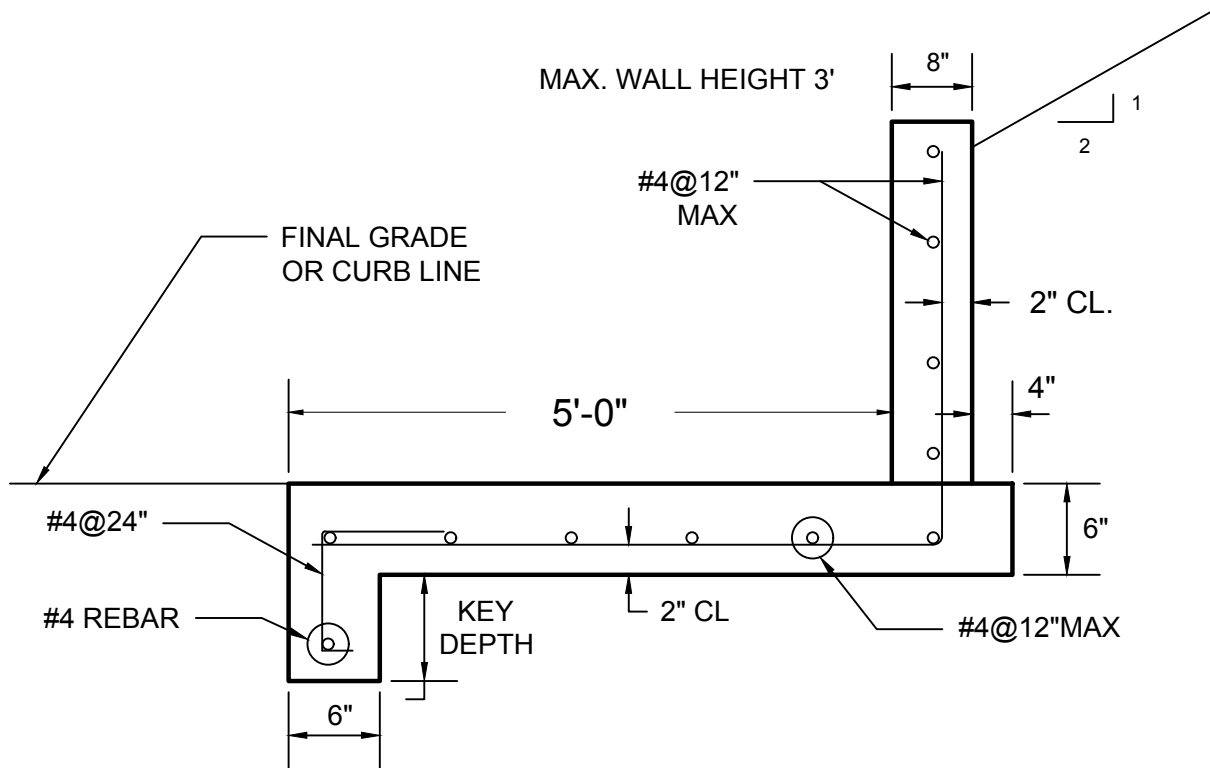


NOTE:
 REINFORCEMENT DETAIL LIMITED TO
 WALL HEIGHTS OF 1'-6" - 3'-0". SECTIONS
 LOWER THAN 1'-6" MAY UTILIZE STANDARD 4"
 SIDEWALK AND UNREINFORCED HEADER CURB.



WALL HEIGHT	KEY DEPTH
1' - 6"	0'
2' - 0"	6" MIN
2'-6"	0'-9"
3'-0"	1'-0"

LOADS:
 SURCHARGE - 0 PSF

MATERIALS:
 CONCRETE ----- $f_c = 2,500$ PSI (MIN)
 REINFORCING ----- $f_y = 60,000$ PSI

SOIL PROPERTIES:
 SOIL WEIGHT = 110 PCF
 $\phi = 28^\circ$
 $c = 0$
 ALLOWABLE SOIL PRESSURE = 3,000 PSF

NOT TO SCALE



CITY OF BROOKHAVEN
 PUBLIC WORKS DEPARTMENT
 TURN UP WALL DETAIL
 FOR 5' SIDEWALK

APRIL 2018, REVISED JUNE 3, 2019