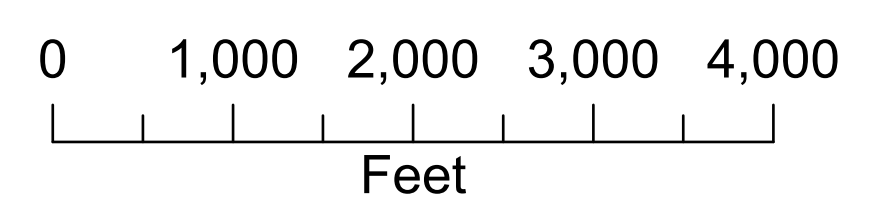
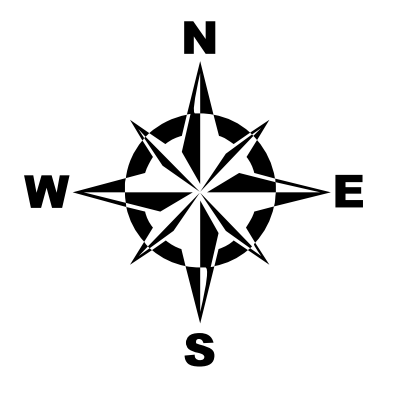


City Council Districts



1 inch equals 1,066 feet
Map Sheet size 30" x 42"

City Council Districts

- District 1 - Linley Jones
- District 2 - John Park
- District 3 - Madeleine Simmons
- District 4 - John Funny

Public Buildings

- City Hall
- Courts
- Parks & Recreation Department
- Library
- Post Office

Transportation

- Railroads
- Expressway
- MARTA Stations

Emergency Services

- Police Headquarters
- Fire Station 02
- Fire Station 15
- Fire Station 8
- Children's at Scottish Rite
- Northside Hospital - Atlanta
- Saint Joseph's Hospital of Atlanta

Education - (Private, Public, Higher Ed.)

- Marist School
- Our Lady of the Assumption
- St. Martin's Episcopal School
- Ashford Park Elementary School
- Cross Keys High School
- DeKalb PATH Academy
- John Robert Lewis Elementary School
- Kittredge Elementary School
- Montclair Elementary School
- Montgomery Elementary School
- Woodward Elementary School
- Oglethorpe University

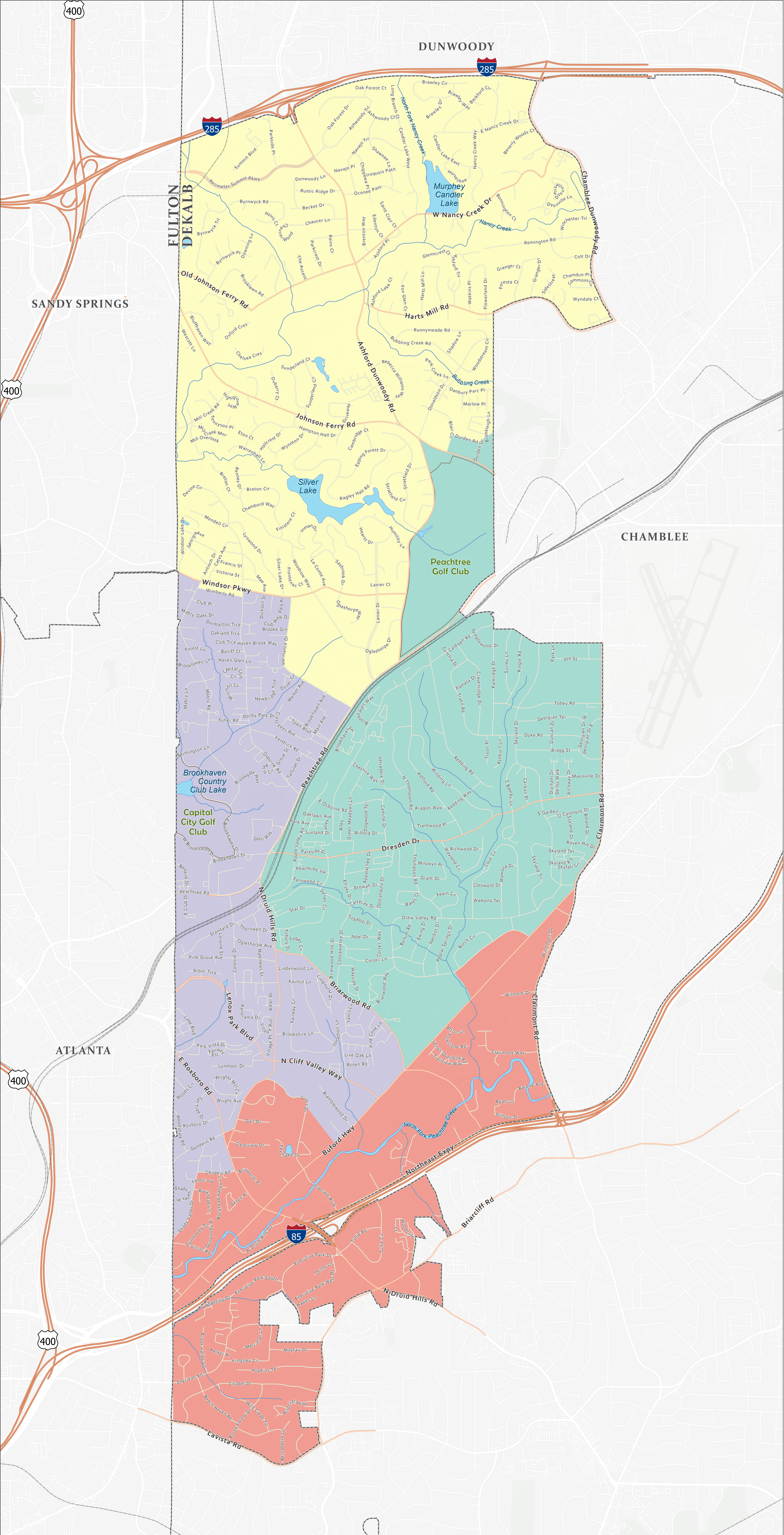
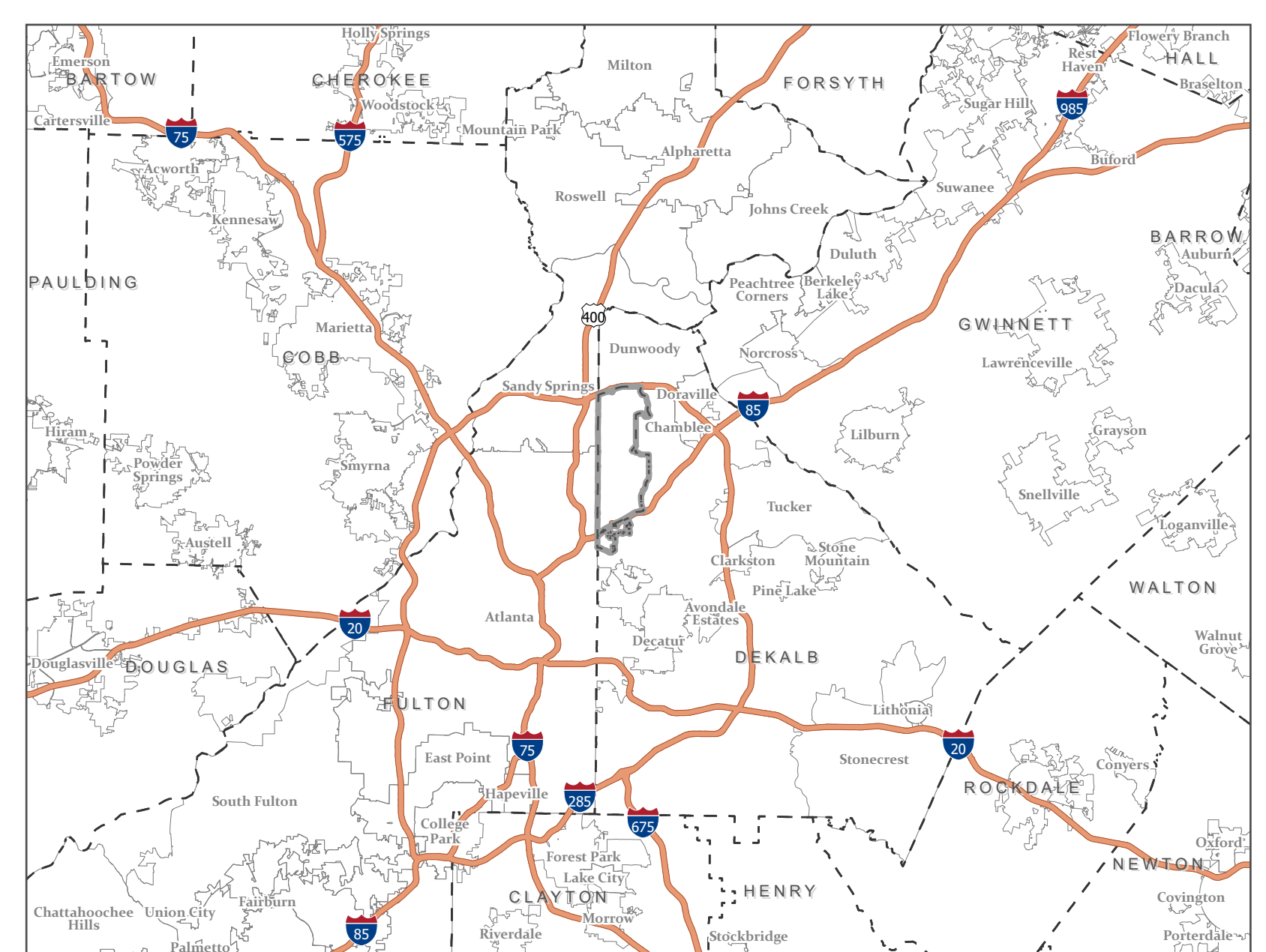
Parks

- Ashford Forest Preserve
- Ashford Park
- Blackburn Park
- Blackburn II Park
- Briarwood Park
- Brookhaven Park
- Clack's Corner
- Fernwood Park
- Georgian Hills
- Lynwood Park
- Murphey Candler Park
- N Druid Hills Greenspace
- Osborne Park
- Parkside Park
- Perimeter Trail
- Skyland Park
- LaVista Park

Water

- Creek or Stream
- Lake or Pond

Prepared by the
City of Brookhaven IT/GIS Department
1/5/2022



This map has been compiled from the most accurate source data from City of Brookhaven and/or other agencies. However, this map is for informational purposes only and is not to be interpreted as a legal document. The City assumes no legal responsibility for the information shown on this map. For inquiries please contact the City of Brookhaven. Maps may be reproduced or transmitted for personal and informational purposes only, but not for commercial use. No part of this work may be reproduced or transmitted for commercial purposes, in any form or by any means, electronic or mechanical, including photocopying and recording, or by any information storage or retrieval system, except as expressly permitted in writing by the City of Brookhaven. Copyright © 2022, By the City of Brookhaven, GA 30319-3023. All rights reserved. Requests should be made to the City's IT/GIS Department at (404) 637-0500